

# **ADDENDUM NO. 1**

## **PARCEL A/B MAJOR HUB DEVELOPMENT**

**Borough of Naugatuck, Connecticut  
Contract No. FY25-B094**

**May 7, 2024**

The following information, whether offered as supplemental or for clarification purposes, hereby becomes part of the bid and contract documents for the above-referenced project.

Inclusion of this Addendum must be acknowledged by inserting its number and date on page PF-1 of the Proposal / Bid Form. Failure to acknowledge any and all addenda in the above specified bid form may be cause for rejection of a bid by the Owner on the grounds that it is not responsive. This Addendum consists of one (1) page, plus eight (8) attachments.

### **\*\*DRAWINGS\*\***

**ITEM 1-1: REPLACE** Sheet DRG-03 with Attachment 1: DRG-03.A1.

**ITEM 1-2: REPLACE** Sheet DRG-03.1 with Attachment 2: DRG-03.1.A1.

**ITEM 1-3: REPLACE** Sheet GRD-04 with Attachment 3: GRD-04.A1.

**ITEM 1-4: REPLACE** Sheet GRD-05 with Attachment 4: GRD-05.A1.

**ITEM 1-5: REPLACE** Sheet GRD-DET-03 with Attachment 5: GRD-DET-03.A1.

**ITEM 1-6: REPLACE** Sheet SPP-04 with Attachment 6: SPP-04.A1.

### **\*\*SPECIFICATIONS\*\***

**ITEM 1-7: CONTRACT NUMBER**

**REVISE** Contract number throughout contract documents to **FY25-B094**.

**ITEM 1-8: NOTICE TO CONTRACTOR-09 SEQUENCE OF CONSTRUCTION**

**REPLACE** NTC-09 with Attachment 7.

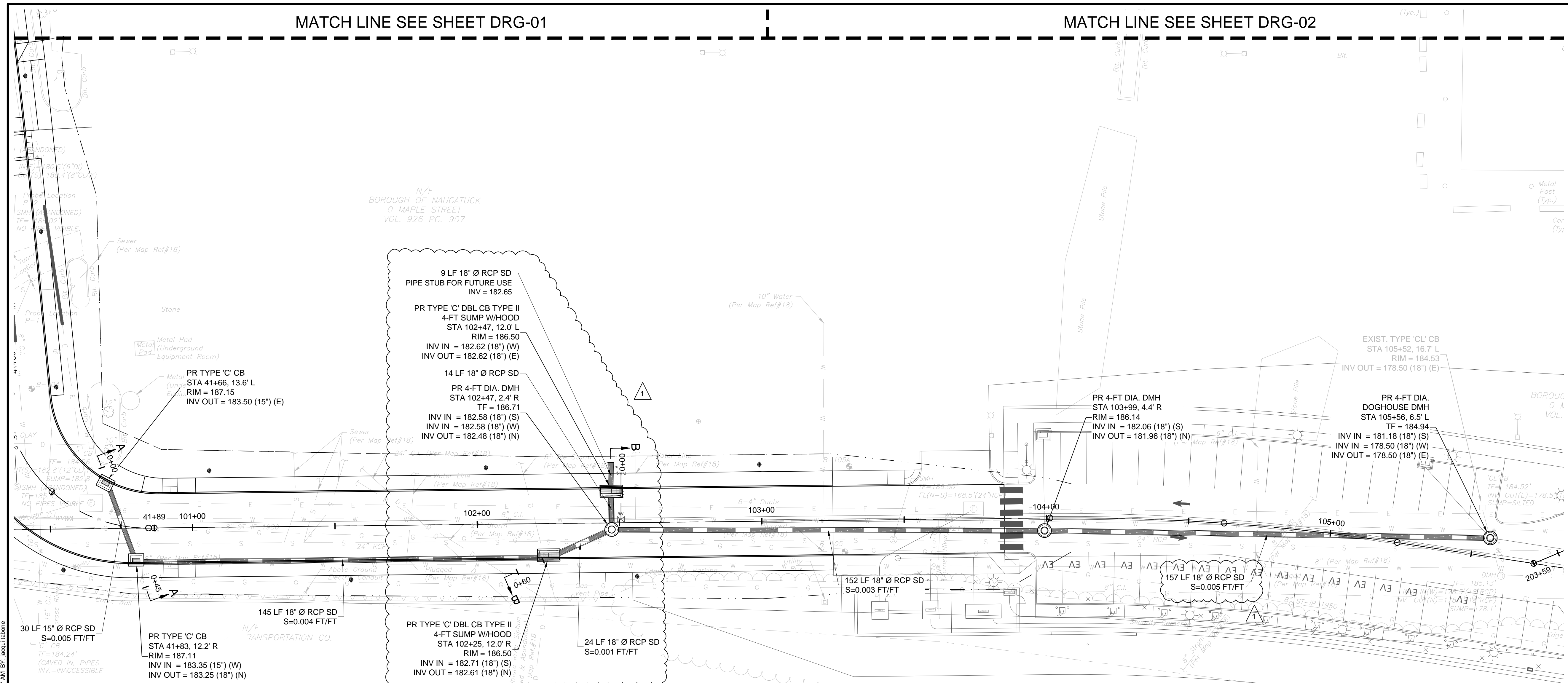
**ITEM 1-9: BID SCHEDULE**

**REPLACE** the Bid Schedule with Attachment 8.

ATTACHMENT 1

MATCH LINE SEE SHEET DRG-01

MATCH LINE SEE SHEET DRG-02



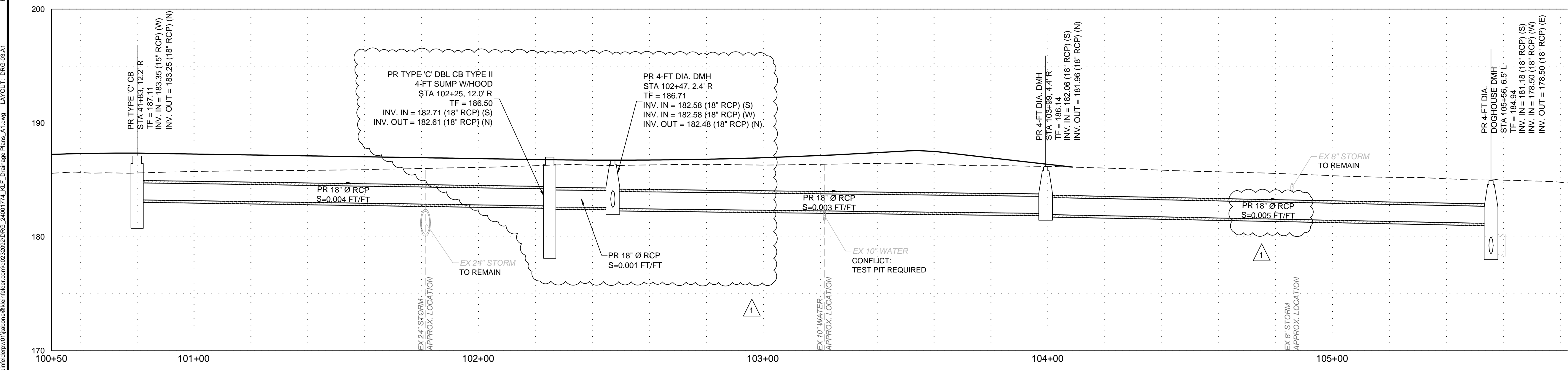
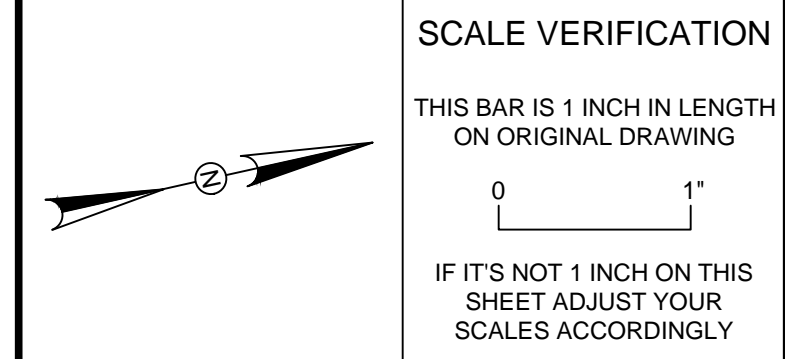
DRAWING ISSUE

REV	DESCRIPTION	DATE

REVISIONS

REV	DESCRIPTION	DSN	CHK	DATE
1	ADDENDUM NO. 1	KRV	PB	5/10/2024

**ADDENDUM NO. 1**



**DRAINAGE PLAN & PROFILE**

PARCEL A & B MAJOR HUB DEVELOPMENT  
BOROUGH OF NAUGATUCK



ADDENDUM NO. 1

PROJECT NO.	24001774.002A
ISSUE DATE	5/10/2024
CURRENT REVISION	A1
DESIGNED BY	K. VIOLETTE
DRAWN BY	L. NORRIS
CHECKED BY	P. KING
APPROVED BY	N. KULIKASKAS

**DRG-03.A1**

PLOTTED: 5/7/2024 8:57 AM BY: jessie.taboras

CAD FILE: C:\pwworking\kleinfelder\proj\24001774.ME\Drawings\24001774.ME\Drainage Plans\_A1.dwg LAYOUT: DRG-03.A1

ATTACHMENT 2

DRAWING ISSUE

REV	DESCRIPTION	DATE

REVISIONS

REV	DESCRIPTION	DSN	CHK	DATE
1	ADDENDUM NO. 1	KRV	PB	5/10/2024

**ADDENDUM NO. 1**

SCALE VERIFICATION

THIS BAR IS 1 INCH IN LENGTH ON ORIGINAL DRAWING

SCALE: 1" = 20' SCALE IN FEET

ORIGINAL DRAWING SIZE IS 22 x 34

IF IT'S NOT 1 INCH ON THIS SHEET ADJUST YOUR SCALES ACCORDINGLY

0 20 40  
SCALE: 1" = 20' SCALE IN FEET  
ORIGINAL DRAWING SIZE IS 22 x 34

**DRAINAGE PLAN & PROFILE**

PARCEL A & B MAJOR HUB DEVELOPMENT  
BOROUGH OF NAUGATUCK

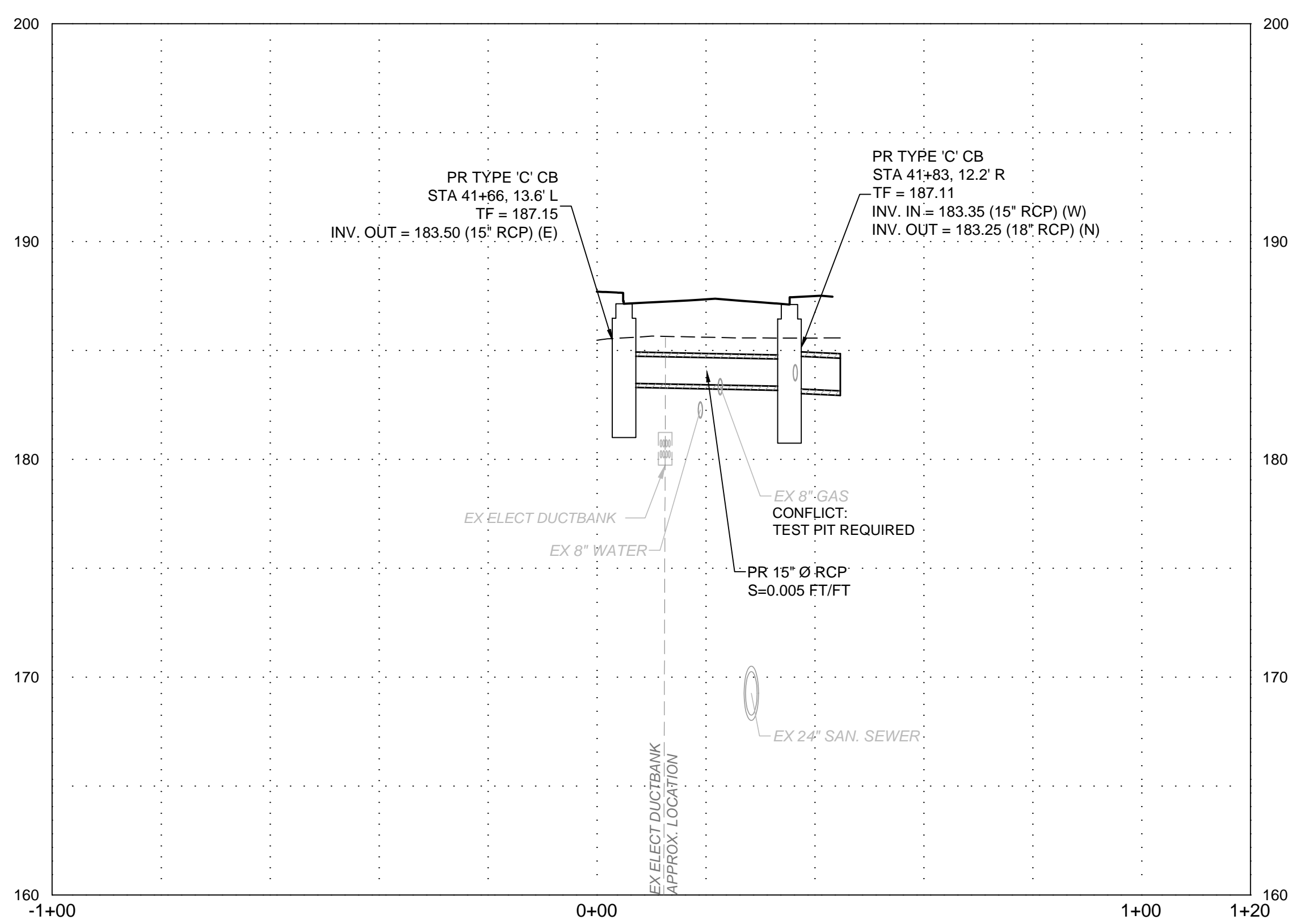
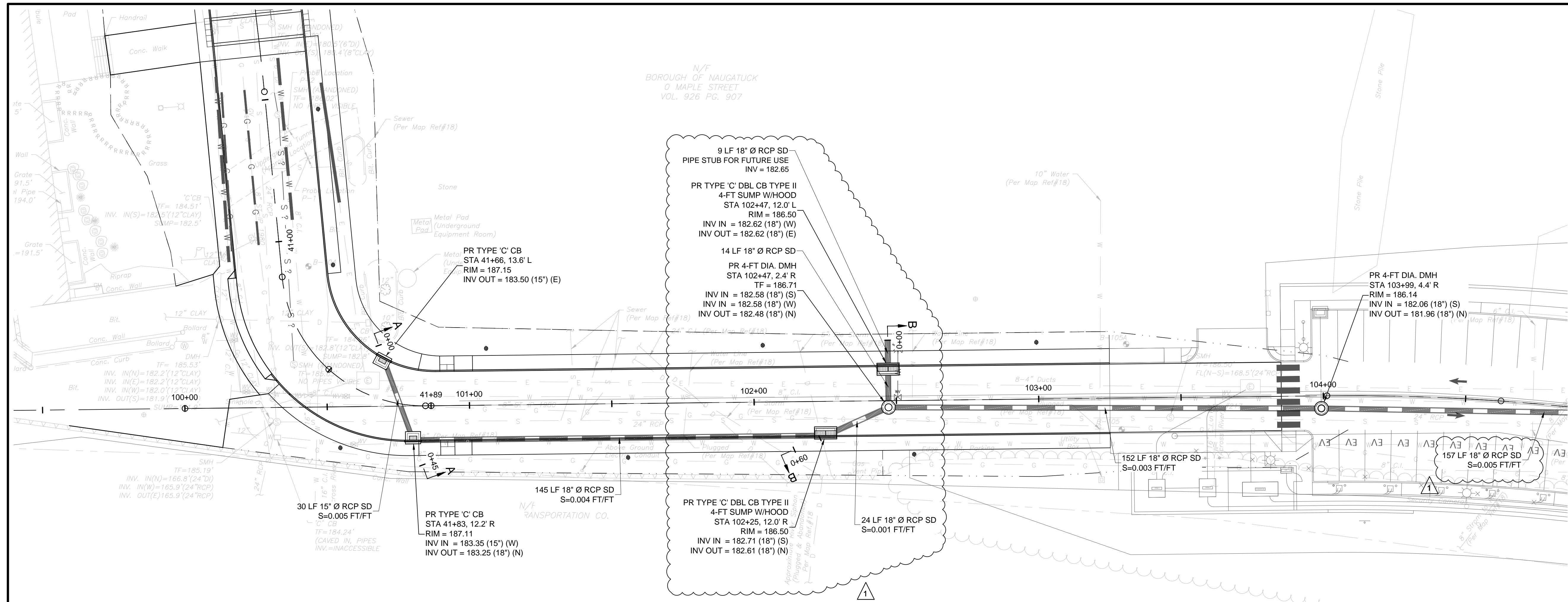


BOROUGH OF NAUGATUCK  
229 CHURCH STREET  
NAUGATUCK, CT 06770

**ADDENDUM NO. 1**

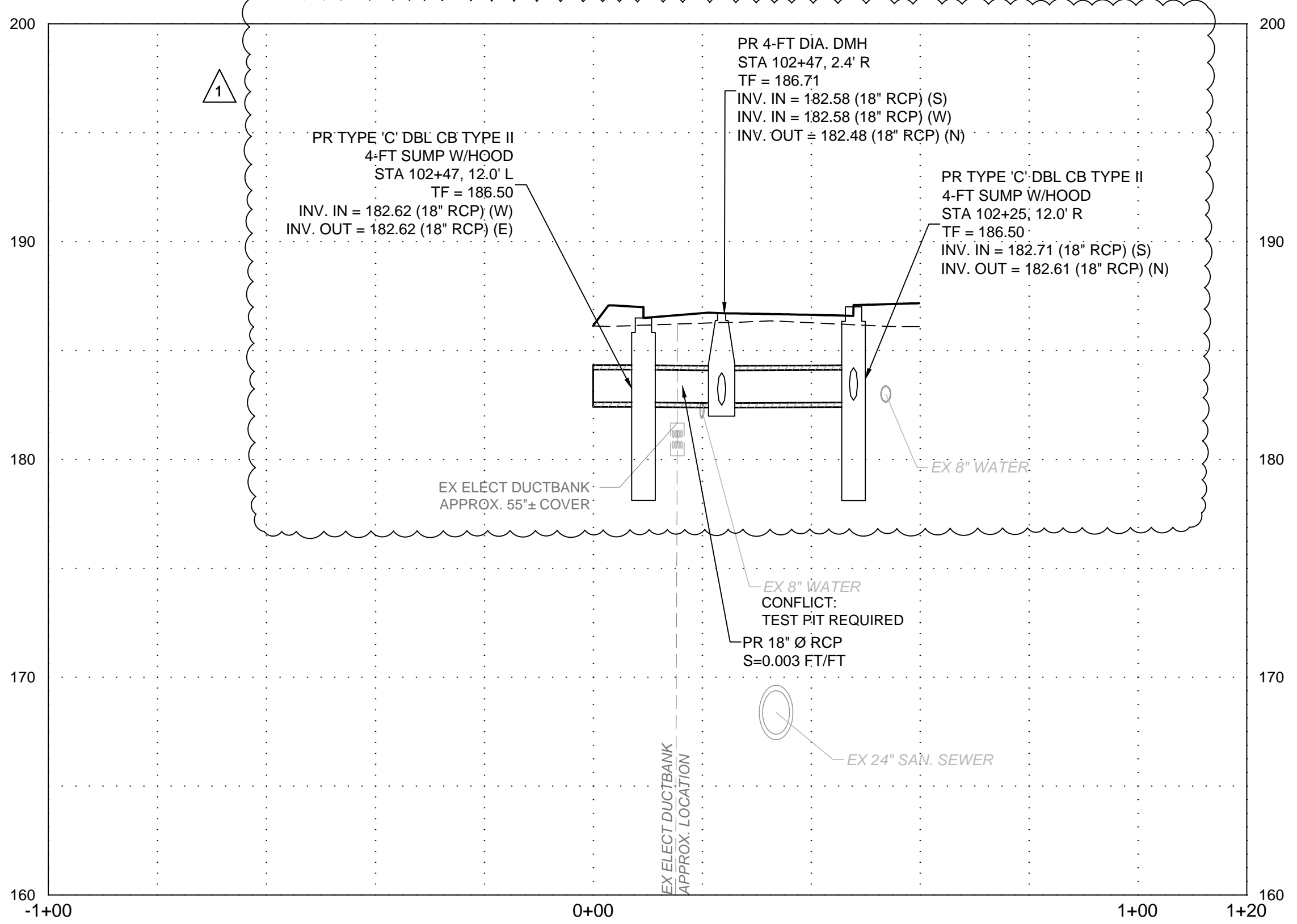
PROJECT NO.	24001774.002A
ISSUE DATE	5/10/2024
CURRENT REVISION	A1
DESIGNED BY	K. VIOLETTE
DRAWN BY	L. NORRIS
CHECKED BY	P. KING
APPROVED BY	N. KULIKASKAS

**DRG-03.1.A1**



**SECTION A - A**  
HORIZONTAL SCALE: 1"=20'  
VERTICAL SCALE: 1"=5'

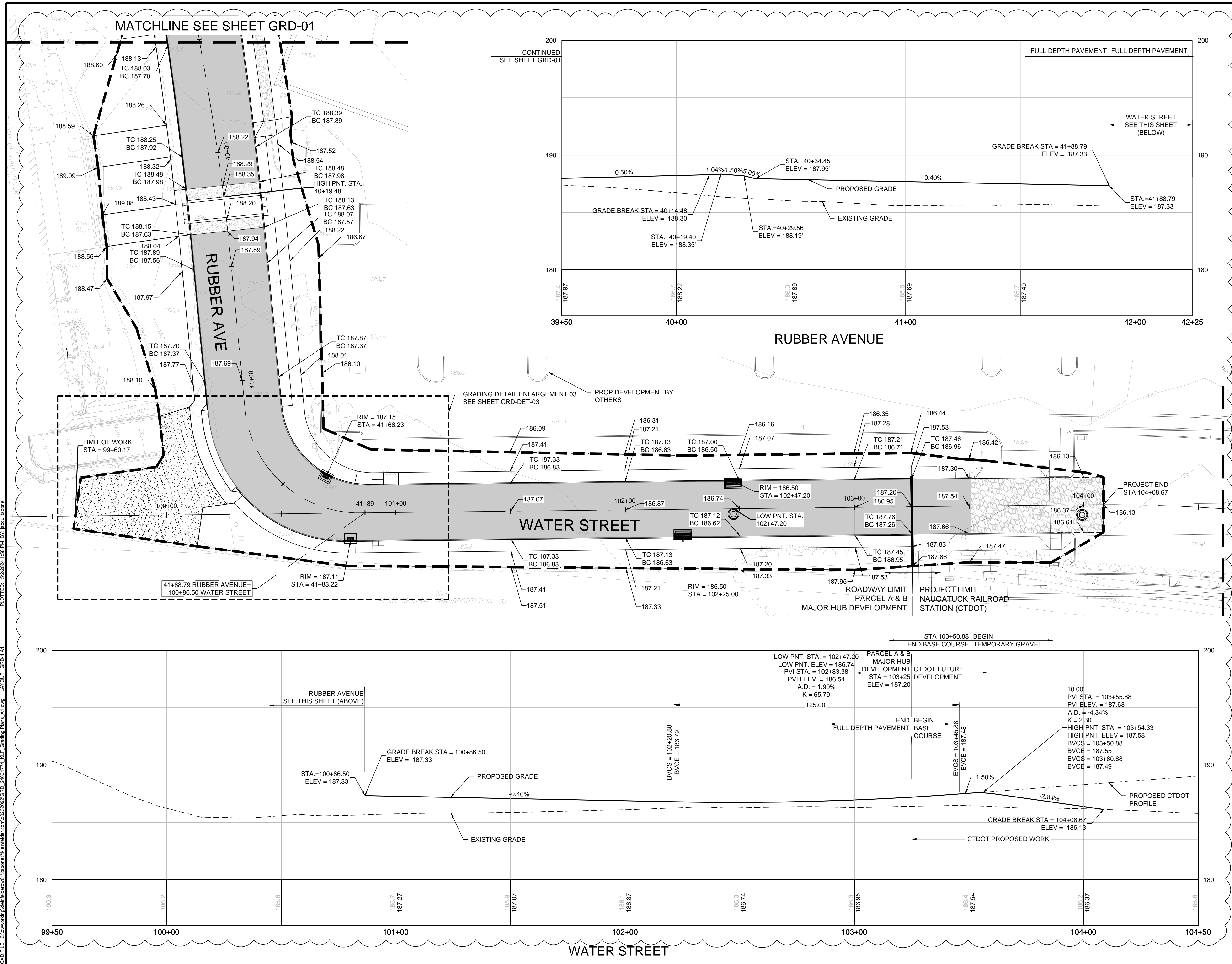
**PLAN**  
SCALE: 1"=20'



**SECTION B - B**  
HORIZONTAL SCALE: 1"=20'  
VERTICAL SCALE: 1"=5'

CAD FILE: C:\pwworking\kleinfelder\proj\01\libone\k\k\230202\DRG\_24001774\_MLF\_Drainage Plans\_A1.dwg LAYOUT: DRG-03.1.A1 PLOTTED: 5/7/2024 9:42 AM BY: jesuslabona

ATTACHMENT 3



**KLEINFELDER**  
Bright People. Right Solutions.

400 Capital Boulevard, Suite 104  
Rocky Hill, CT 06067  
Phone: 860-563-7775  
www.kleinfelder.com

LANDSCAPE ARCHITECT  
**Richter & Cegan Inc.**  
88 CANAL COURT P.O. BOX 567  
AVON, CT 06001  
PHONE: 860-678-0669  
CONTACT NAME: Gary Guimond  
EMAIL: gguimond@richtercegan.com

DRAWING ISSUE

REV	DESCRIPTION	DATE

REVISIONS

REV	DESCRIPTION	DSN	CHK	DATE
1	ADDENDUM NO. 1	PB	PB	5/10/2024
		JT	PB	

**ADDENDUM NO. 1**

SCALE VERIFICATION

THIS BAR IS 1 INCH IN LENGTH ON ORIGINAL DRAWING

IF IT'S NOT 1 INCH ON THIS SHEET ADJUST YOUR SCALES ACCORDINGLY

HORIZONTAL SCALE: 1" = 20'

VERTICAL SCALE: 1" = 4'

ORIGINAL DRAWING SIZE IS 22 x 34

**GRADING PLAN & PROFILE**

PARCEL A & B MAJOR HUB DEVELOPMENT  
BOROUGH OF NAUGATUCK

BOROUGH OF NAUGATUCK  
229 CHURCH STREET  
NAUGATUCK, CT 06770

ADDENDUM NO. 1

PROJECT NO.	24001774.002A
ISSUE DATE	5/10/2024
CURRENT REVISION	A1
DESIGNED BY	P. BAKIS
DRAWN BY	J. TABONE
CHECKED BY	P. KING
APPROVED BY	N. KULIKAUSKAS

GRD-04.A1

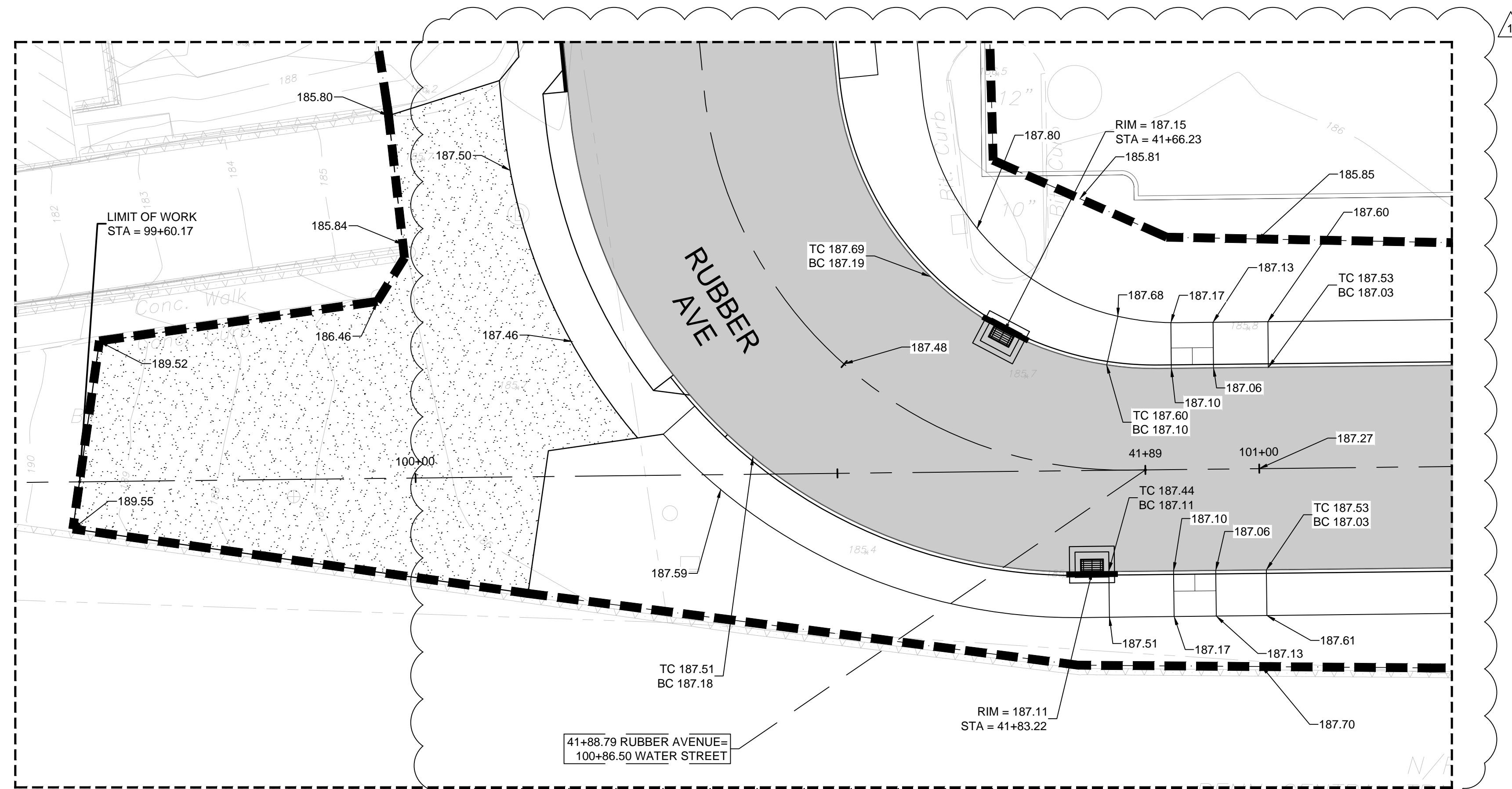
PLOTTED: 5/22/2024 1:58 PM BY: jesus.tabone  
 CAD FILE: C:\pwworking\kleinfelder\proj\01\tabone\kleinfelder.com\023020GRD\_24001774\_MLF\_Grading Plans\_A1.dwg LAYOUT: GRD-04.A1

ATTACHMENT 4





ATTACHMENT 5

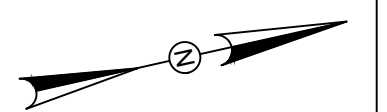


DETAIL GRADING ENLARGEMENT 03  
SCALE = 1"=10'

DRAWING ISSUE		
REV	DESCRIPTION	DATE

REVISIONS				
REV	DESCRIPTION	DSN	CHK	DATE
1	ADDENDUM NO. 1	JT	PB	5/10/2024

**ADDENDUM NO. 1**

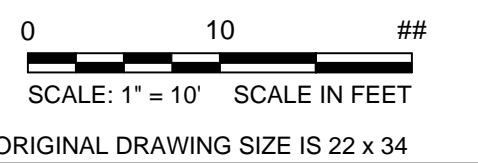


SCALE VERIFICATION

THIS BAR IS 1 INCH IN LENGTH ON ORIGINAL DRAWING



IF IT'S NOT 1 INCH ON THIS SHEET ADJUST YOUR SCALES ACCORDINGLY



**DETAIL GRADING**

PARCEL A & B MAJOR HUB  
DEVELOPMENT  
BOROUGH OF NAUGATUCK



BOROUGH OF NAUGATUCK  
229 CHURCH STREET  
NAUGATUCK, CT 06770

**ADDENDUM NO. 1**

PROJECT NO.	24001774.002A
ISSUE DATE	5/10/2024
CURRENT REVISION	A1
DESIGNED BY	P. BAKIS
DRAWN BY	J. TABONE
CHECKED BY	P. KING
APPROVED BY	N. KULIKAUSKAS

**GRD-  
DET-03.A1**

ATTACHMENT 6



DRAWING ISSUE		
REV	DESCRIPTION	DATE

REVISIONS				
REV	DESCRIPTION	DSN	CHK	DATE
1	ADDENDUM NO. 1	REM	GJG	05/10/2024

**ADDENDUM NO. 1**

**SCALE VERIFICATION**

THIS BAR IS 1 INCH IN LENGTH ON ORIGINAL DRAWING

SCALE: 1" = 20' SCALE IN FEET

ORIGINAL DRAWING SIZE IS 22 x 34

IF IT'S NOT 1 INCH ON THIS SHEET ADJUST YOUR SCALES ACCORDINGLY

**STREETSCAPE PLANTING PLAN**

PARCEL A & B MAJOR HUB DEVELOPMENT  
BOROUGH OF NAUGATUCK

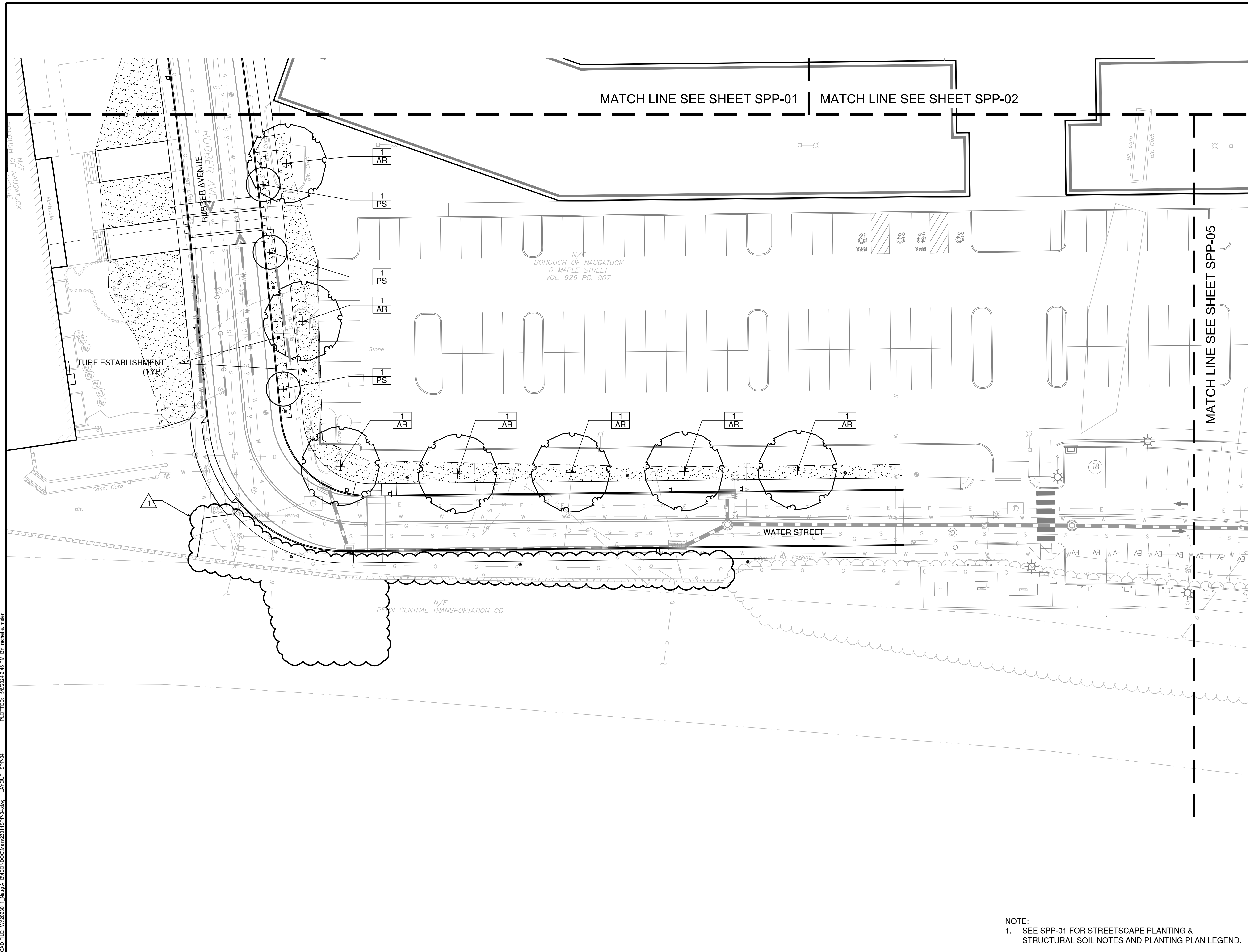


BOROUGH OF NAUGATUCK  
229 CHURCH STREET  
NAUGATUCK, CT 06770

**ADDENDUM NO. 1**

PROJECT NO.	24001774.002A
ISSUE DATE	05/10/2024
CURRENT REVISION	A1
DESIGNED BY	MAC/GJG
DRAWN BY	REM/JJP
CHECKED BY	GJG
APPROVED BY	MAC

**SPP-04.A1**



NOTE:  
1. SEE SPP-01 FOR STREETSCAPE PLANTING & STRUCTURAL SOIL NOTES AND PLANTING PLAN LEGEND.

CAD FILE: W:\2024\11\_Naug A+B\MCD\2301\SPP-04.dwg LAYOUT: SPP-04 PLOTTED: 5/6/2024 2:46 PM BY: rachel c. meier

ATTACHMENT 7

**NOTICE TO CONTRACTOR – SEQUENCE OF CONSTRUCTION**

The anticipated starting date for construction is Summer 2024 with completion in Summer / Early Fall 2025. Prior to commencement of work, erosion and sedimentation control structures shall be installed. Schedule work to minimize the length of time bare soil will be exposed within each phase of construction. The suggested construction sequence has been prepared to meet needs of the Borough.

1. Contact the Borough at least forty-eight (48) hours prior to commencement of any demolition or construction on this project.
2. Submit and install project sign approved by the Borough.
3. Physically mark out clearing limits in the field and for approval by the Borough's agent prior to the start of work. Install tree protection, silt fence, and other erosion control measures.
4. Install construction fence around staging area to minimize disruption to pedestrians and separate construction activities from the remainder of the site.
5. Construct construction entrances.
6. Remove existing topsoil, groundcover, trees, and other vegetation per the demolition plans.
7. Coordinate with utilities on modifications and relocations.
8. Demolish pump station in accordance with Special Provision 1403610A and Drawings.
  - a. **PUMP STATION DEMOLITION MUST OCCUR BY OCTOBER 1, 2024.**
9. Abandon underground tunnel on Rubber Avenue in accordance with Contract Drawings and Specifications.
  - a. **TUNNEL ABANDONMENT MUST OCCUR BY OCTOBER 1, 2024.**
10. Complete drainage on Water Street (Sheet DRG-03).
  - a. **WATER STREET DRAINAGE MUST OCCUR WITHIN 2024.**
11. Begin installation of proposed storm drainage on Rubber Avenue.
12. Begin demolition of existing drainage and installation of proposed storm drainage along Old Firehouse Road and Connector Road per demolition and drainage plans.
13. Construct intersection Rubber Avenue, Old Firehouse Road, and Elm Street.
14. Install temporary construction driveway on Rubber Avenue. Construct Rubber Avenue and Water Street.
15. Construct Connector Road and coordinate with Borough on traffic control measures.
16. Construct curb lines, sidewalk, and streetscape items along Old Firehouse Road.
17. Construct raised intersection and install Bus Shelters.
18. Construct pedestrian corridor, modify municipal parking lot, and provide associated streetscape items.
19. Plantings and landscaping.

ATTACHMENT 8



**ADDENDUM NO. 1**

**PROPOSAL FORM - BID SCHEDULE  
PARCEL A & B MAJOR HUB DEVELOPMENT  
CONTRACT NO. FY25-B094  
BOROUGH OF NAUGATUCK, CONNECTICUT**

BIDDER'S NAME: \_\_\_\_\_

**GENERAL ITEMS**

ITEM	EST. QTY.	UNITS	DESCRIPTION AND WRITTEN UNIT PRICE	UNIT PRICE	AMOUNT
0970006	1	EST.	TRAFFICPERSON (MUNICIPAL POLICE OFFICER) (ESTIMATED COST)		
			Two-hundred fifty-thousand dollars and No cents per lump sum	\$250,000.00	\$250,000.00
0970006	1	L.S.	MAINTENANCE AND PROTECTION OF TRAFFIC		
			dollars and cents per L.S.	\$	\$
0975004	1	L.S.	MOBILIZATION AND PROJECT CLOSEOUT		
			dollars and cents per L.S.	\$	\$
0980020	1	L.S.	CONSTRUCTION SURVEYING		
			dollars and cents per L.S.	\$	\$
<b>GENERAL PROJECT ITEMS TOTAL (in words)</b>					
				dollars and	\$

**ROADWAY AND STREETScape ITEMS**

ITEM	EST. QTY.	UNITS	DESCRIPTION AND WRITTEN UNIT PRICE	UNIT PRICE	AMOUNT
0101157A	1	L.S.	CONTAMINATED SOIL MANAGEMENT		
			dollars and cents per lump sum	\$	\$
0140361A	1	L.S.	ABANDON UNDERGROUND TUNNEL		
			dollars and cents per lump sum	\$	\$
0201001	1	L.S.	CLEARING AND GRUBBING		
			dollars and cents per lump sum	\$	\$
0202000	1325	C.Y.	EARTH EXCAVATION		
			dollars and cents per cubic yard	\$	\$

ITEM	EST. QTY.	UNITS	DESCRIPTION AND WRITTEN UNIT PRICE	UNIT PRICE	AMOUNT
0202310.1A	365	TON	TRANSPORTATION AND DISPOSAL FOR SOIL AND FILL - CLASS A		
			dollars and	\$	\$
			cents per ton		
0202310.2A	460	TON	TRANSPORTATION AND DISPOSAL FOR SOIL AND FILL - CLASS B		
			dollars and	\$	\$
			cents per ton		
0202310.3A	90	TON	TRANSPORTATION AND DISPOSAL FOR SOIL AND FILL - CLASS C		
			dollars and	\$	\$
			cents per ton		
0202452A	10	EA.	TEST PIT		
			dollars and	\$	\$
			cents per each		
0216012A	100	C.Y.	CONTROLLED LOW STRENGTH MATERIAL		
			dollars and	\$	\$
			cents per cubic yard		
0202529	6020	L.F.	CUT BITUMINOUS CONCRETE PAVEMENT		
			dollars and	\$	\$
			cents per linear foot		
0207000	480	C.Y.	BORROW		
			dollars and	\$	\$
			cents per cubic yard		
0209001	4250	S.Y.	FORMATION OF SUBGRADE		
			dollars and	\$	\$
			cents per square yard		
0212000	100	C.Y.	SUBBASE		
			dollars and	\$	\$
			cents per cubic yard		
0219011A	41	EA.	SEDIMENTATION CONTROL AT CATCH BASIN		
			dollars and	\$	\$
			cents per each		
0286001.10	40	C.Y.	ROCK IN DRAINAGE TRENCH EXCAVATION 0'-10' DEEP		
			dollars and	\$	\$
			cents per cubic yard		
0304002	570	C.Y.	PROCESSED AGGREGATE BASE		
			dollars and	\$	\$
			cents per cubic yard		
0401000A	2880	S.F.	HD CONCRETE PAVEMENT		
			dollars and	\$	\$
			cents per square foot		
0402800A	680	S.F.	CLEAN EXISTING SIDEWALK		
			dollars and	\$	\$
			cents per square foot		

ITEM	EST. QTY.	UNITS	DESCRIPTION AND WRITTEN UNIT PRICE	UNIT PRICE	AMOUNT
0406002	1430	S.Y.	TEMPORARY PAVEMENT (TRENCH WIDTH AND TEMPORARY RAMPS)		
			dollars and	\$	\$
			cents per square yard		
0406170	610	TON	HMA S1		
			dollars and	\$	\$
			cents per ton		
0406171	1260	TON	HMA S0.5		
			dollars and	\$	\$
			cents per ton		
0406236	540	GAL.	MATERIAL FOR TACK COAT		
			dollars and	\$	\$
			cents per gallon		
0406999A	1	ALL.	ASPHALT ADJUSTMENT COST		
			ten-thousand	\$10,000.00	\$10,000.00
			no cents		
			dollars and		
			per allowance		
0409001	4880	S.Y.	FINE MILLING OF BITUMINOUS CONCRETE (0" TO 4")		
			dollars and	\$	\$
			cents per square yard		
0507022	9	EA.	TYPE 'C' DBL CATCH BASIN TYPE II		
			dollars and	\$	\$
			cents per each		
0507105	3	EA.	CONNECTION TO EXISTING MANHOLE AND/OR CATCH BASIN		
			dollars and	\$	\$
			cents per each		
0507119A	6	EA.	GRANITE CURB CATCH BASIN INLET (SINGLE)		
			dollars and	\$	\$
			cents per each		
0507120A	9	EA.	GRANITE CURB CATCH BASIN INLET (DOUBLE)		
			dollars and	\$	\$
			cents per each		
0507602A	1	EA.	DOGHOUSE MANHOLE		
			dollars and	\$	\$
			cents per each		
0519003A	1	L.S.	WATERPROOF AT BUILDING WALL AND PAVEMENT INTERFACE		
			dollars and	\$	\$
			cents per lump sum		
0586001.1	6	EA.	TYPE 'C' CATCH BASIN - 0'-10' DEEP		
			dollars and	\$	\$
			cents per each		
0586044.1	1	EA.	TYPE 'C-L' CATCH BASIN DOUBLE GRATE TYPE 2 - 0' - 10' DEEP		
			dollars and	\$	\$
			cents per each		

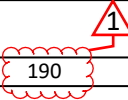
ITEM NO. 0686230.18 DELETED  
PER ADDENDUM NO. 1

ITEM	EST. QTY.	UNITS	DESCRIPTION AND WRITTEN UNIT PRICE	UNIT PRICE	AMOUNT
0586086A	8	EA.	ABANDON DRAINAGE STRUCTURE		
			dollars and	\$	\$
			cents per each		
0586500.10	5	EA.	STORM MANHOLE - 4' DIAMETER		
			dollars and	\$	\$
			cents per each		
0586501.05	4	EA.	STORM MANHOLE - 5' DIAMETER		
			dollars and	\$	\$
			cents per each		
0586790A	20	EA.	REMOVE DRAINAGE STRUCTURE		
			dollars and	\$	\$
			cents per each		
0686000.15	390	L.F.	15" R.C. PIPE - 0' - 10' DEEP		
			dollars and	\$	\$
			cents per linear foot		
0686000.18	600	L.F.	18" R.C. PIPE - 0' - 10' DEEP		
			dollars and	\$	\$
			cents per linear foot		
0686000.24	770	L.F.	24" R.C. PIPE - 0' - 10' DEEP		
			dollars and	\$	\$
			cents per linear foot		
0813012A	3370	L.F.	5" X 18" GRANITE STONE CURBING		
			dollars and	\$	\$
			cents per linear foot		
0813013A	860	L.F.	5" X 18" GRANITE CURVED STONE CURBING		
			dollars and	\$	\$
			cents per linear foot		
0815001	440	L.F.	BITUMINOUS CONCRETE LIP CURBING		
			dollars and	\$	\$
			cents per linear foot		
0901003A	5	EA.	STEEL PIPE BOLLARD		
			dollars and	\$	\$
			cents per each		
0901005A	24	EA.	DECORATIVE METAL PIPE BOLLARD 36"		
			dollars and	\$	\$
			cents per each		
0901006A	5	EA.	DECORATIVE METAL PIPE BOLLARD 52"		
			dollars and	\$	\$
			cents per each		
0912700A	110	L.F.	TIMBER GUIDE RAIL		
			dollars and	\$	\$
			cents per linear foot		

ITEM	EST. QTY.	UNITS	DESCRIPTION AND WRITTEN UNIT PRICE	UNIT PRICE	AMOUNT
0913984	460	L.F.	TEMPORARY PROTECTIVE FENCING		
			dollars and	\$	\$
			cents per linear foot		
0914013A	100	L.F.	3'-6" HIGH BOROUGH STANDARD ORNAMENTAL METAL FENCE		
			dollars and	\$	\$
			cents per linear foot		
0914017A	52	L.F.	8' HIGH MESH INSERT FOR DECORATIVE ORNAMENTAL METAL FENCE SCREENING		
			dollars and	\$	\$
			cents per linear foot		
0914018A	216	L.F.	4' HIGH DECORATIVE ORNAMENTAL METAL FENCE SCREENING		
			dollars and	\$	\$
			cents per linear foot		
0914019A	63	L.F.	8' HIGH DECORATIVE ORNAMENTAL METAL FENCE SCREENING		
			dollars and	\$	\$
			cents per linear foot		
0914020A	1	EA.	8' HIGH DECORATIVE ORNAMENTAL METAL FENCE SCREENING DBL GATES		
			dollars and	\$	\$
			cents per each		
0914021A	1	EA.	DECORATIVE ORNAMENTAL METAL FENCE SCREENING TRELIS		
			dollars and	\$	\$
			cents per each		
0914022A	2	EA.	PEDESTRIAN GATEWAY ARCH		
			dollars and	\$	\$
			cents per each		
0915000A	1	L.S.	TREE PROTECTION, PRUNING AND TRIMMING - STREETSCAPE		
			dollars and	\$	\$
			cents per lump sum		
0921001A	13990	S.F.	CONCRETE SIDEWALK		
			dollars and	\$	\$
			cents per square foot		
0921003A	70	S.F.	CONCRETE SIDEWALK REPAIR		
			dollars and	\$	\$
			cents per square foot		
0921005A	330	S.F.	CONCRETE SIDEWALK RAMP		
			dollars and	\$	\$
			cents per square foot		
0921007A	250	S.F.	BRICK SIDEWALK RAMP		
			dollars and	\$	\$
			cents per square foot		
0921008A	1580	S.F.	BRICK SIDEWALK - BANDING PAVER		
			dollars and	\$	\$
			cents per square foot		

ITEM	EST. QTY.	UNITS	DESCRIPTION AND WRITTEN UNIT PRICE	UNIT PRICE	AMOUNT
0921009A	6060	S.F.	BRICK SIDEWALK FIELD PAVER		
			dollars and	\$	\$
			cents per square foot		
0921010A	250	EA.	BRICK SIDEWALK INSET PAVER		
			dollars and	\$	\$
			cents per each		
0921013A	1290	S.F.	CONCRETE DRIVEWAY APRONS		
			dollars and	\$	\$
			cents per square foot		
0921015A	130	S.F.	BRICK SIDEWALK REPAIR		
			dollars and	\$	\$
			cents per square foot		
0921017A	2240	S.F.	BRICK PAVER ROADWAY - FIELD PAVER		
			dollars and	\$	\$
			cents per square foot		
0921018A	70	EA.	BRICK PAVER ROADWAY - INSET PAVER		
			dollars and	\$	\$
			cents per each		
0921023A	170	S.F.	CRUSHED GRANITE AGGREGATE SURFACING - 6" DEPTH		
			dollars and	\$	\$
			cents per square foot		
0921024A	7	EA.	PEDESTRIAN GATEWAY GRANITE COLUMN BASE BLOCK		
			dollars and	\$	\$
			cents per each		
0921025A	1	EA.	PEDESTRIAN GATEWAY GRANITE COLUMN BASE BLOCK - NOTCHED		
			dollars and	\$	\$
			cents per each		
0921026A	32	EA.	PEDESTRIAN GATEWAY GRANITE COLUMN BLOCK		
			dollars and	\$	\$
			cents per each		
0921027A	4	EA.	PEDESTRIAN GATEWAY GRANITE COLUMN COPING BLOCK		
			dollars and	\$	\$
			cents per each		
0921031A	16	L.F.	GRANITE SEAT WALL - STRAIGHT - TYPE 1		
			dollars and	\$	\$
			cents per linear foot		
0921032A	2	EA.	GRANITE SEAT WALL - STRAIGHT - TYPE 1 - CORNER		
			dollars and	\$	\$
			cents per each		
0921037A	16	L.F.	GRANITE SEAT WALL - COPING - STRAIGHT - TYPE 1		
			dollars and	\$	\$
			cents per linear foot		

ITEM	EST. QTY.	UNITS	DESCRIPTION AND WRITTEN UNIT PRICE	UNIT PRICE	AMOUNT
0921038A	2	EA.	GRANITE SEAT WALL - COPING - TYPE 1 - CORNER		
			dollars and	\$	\$
			cents per each		
0921042A	28	S.F.	GRANITE PAVER BANDING - TYPE C		
			dollars and	\$	\$
			cents per square foot		
0921043A	280	S.F.	GRANITE PAVER BANDING - TYPE R		
			dollars and	\$	\$
			cents per square foot		
0921050A	250	S.F.	DETECTABLE WARNING CAST IRON PAVER		
			dollars and	\$	\$
			cents per square foot		
0921098A	700	EA.	FLEXIBLE PERMEABLE PAVEMENT AT NEW TREE W/ STRUCTURAL SOIL		
			dollars and	\$	\$
			cents per each		
0922001	250	S.Y.	BITUMINOUS CONCRETE SIDEWALK		
			dollars and	\$	\$
			cents per square yard		
0922050A	1400	S.F.	DECORATIVE CROSSWALK		
			dollars and	\$	\$
			cents per square foot		
0922498	190	S.Y.	TEMPORARY GRAVEL DRIVEWAY AND PARKING AREA		
			dollars and	\$	\$
			cents per square yard		
0922500	230	S.Y.	BITUMINOUS CONCRETE DRIVEWAY (COMMERCIAL)		
			dollars and	\$	\$
			cents per square yard		
0944000A	530	C.Y.	FURNISHING AND PLACING TOPSOIL		
			dollars and	\$	\$
			cents per cubic yard		
0944104A	40	C.Y.	STRUCTURAL SOIL FOR TREE PLANTING		
			dollars and	\$	\$
			cents per cubic yard		
0947207A	6	EA.	BICYCLE RACK		
			dollars and	\$	\$
			cents per each		
0947303A	2	EA.	BUS SHELTER		
			dollars and	\$	\$
			cents per each		
0949003A	1	L.S.	FURNISHING, PLANTING AND MULCHING TREES, SHBS, VINES & GRNDS		
			dollars and	\$	\$
			cents per lump sum		



ITEM	EST. QTY.	UNITS	DESCRIPTION AND WRITTEN UNIT PRICE	UNIT PRICE	AMOUNT
0950040A	220	S.Y.	NE CONSERVATION SEED MIX		
			dollars and	\$	\$
			cents per square yard		
0950005A	3180	S.Y.	TURF ESTABLISHMENT		
			dollars and	\$	\$
			cents per square yard		
0950013	2372	S.Y.	EROSION CONTROL MATTING		
			dollars and	\$	\$
			cents per square yard		
0992090A	6	EA.	BENCH (METAL)		
			dollars and	\$	\$
			cents per each		
0992103A	4	EA.	TRASH RECEPTACLE		
			dollars and	\$	\$
			cents per each		
0992104A	4	EA.	RECYCLE RECEPTACLE		
			dollars and	\$	\$
			cents per each		
1002110A	38	EA.	DECORATIVE LIGHT POLE FOUNDATION		
			dollars and	\$	\$
			cents per each		
1003595A	38	EA.	DECORATIVE LIGHT POLE AND LUMINARIE		
			dollars and	\$	\$
			cents per each		
1003675A	7	EA.	CATENARY LIGHTING POLE - 16' H		
			dollars and	\$	\$
			cents per each		
1003677A	13	EA.	CATENARY LIGHTING POLE FOUNDATION (16' H POLE)		
			dollars and	\$	\$
			cents per each		
1003678A	730	L.F.	CATENARY LIGHTING AND SUPPORT CABLE		
			dollars and	\$	\$
			cents per linear foot		
1003679A	6	EA.	DECORATIVE STRING LIGHTING IN EXISTING TREES		
			dollars and	\$	\$
			cents per each		
1003680A	4	EA.	CATENARY LIGHTING POLE - 16' H WITH GFI		
			dollars and	\$	\$
			cents per each		
1003681A	2	EA.	CATENARY LIGHT POLE 16' H WITH GFI & BRACKET ARM		
			dollars and	\$	\$
			cents per each		



ITEM	EST. QTY.	UNITS	DESCRIPTION AND WRITTEN UNIT PRICE	UNIT PRICE	AMOUNT
1003906A	12	EA.	REMOVE LIGHT STANDARD		
			dollars and	\$	\$
			cents per each		
1003912A	12	EA.	REMOVE CONCRETE LIGHT STANDARD BASE		
			dollars and	\$	\$
			cents per each		
1014908A	6	EA.	OUTDOOR GROUND BOX WITH RECESSED QUAD DUPLEX RECEPTACLE		
			dollars and	\$	\$
			cents per each		
1008127	2000	L.F.	2" PVC CONDUIT IN TRENCH		
			dollars and	\$	\$
			cents per linear foot		
1008215	250	L.F.	2" RIGID CONDUIT UNDER ROADWAY		
			dollars and	\$	\$
			cents per linear foot		
1206022A	1	EA.	DECD PROJECT SIGN		
			dollars and	\$	\$
			cents per each		
1206023A	1	L.S.	REMOVAL AND RELOCATION OF EXISTING SIGNS		
			dollars and	\$	\$
			cents per lump sum		
1208931	130	S.F.	SIGN FACE - SHEET ALUMINUM (TYPE IV RETROREFLECTIVE SHEETING)		
			dollars and	\$	\$
			cents per square foot		
1210101	4160	L.F.	4" WHITE EPOXY-RESIN PAVEMENT MARKINGS		
			dollars and	\$	\$
			cents per linear foot		
1210102	3840	L.F.	4" YELLOW EPOXY-RESIN PAVEMENT MARKINGS		
			dollars and	\$	\$
			cents per linear foot		
1210105	370	S.F.	EPOXY RESIN PAVEMENT MARKINGS, SYMBOLS AND LEGEND		
			dollars and	\$	\$
			cents per square foot		
1210106	400	L.F.	12" WHITE EPOXY-RESIN PAVEMENT MARKINGS		
			dollars and	\$	\$
			cents per linear foot		
1211001	131	S.F.	REMOVAL OF PAVEMENT MARKINGS		
			dollars and	\$	\$
			cents per square foot		
1302047A	40	EA.	RESET GATE BOXES		
			dollars and	\$	\$
			cents per each		

ITEM	EST. QTY.	UNITS	DESCRIPTION AND WRITTEN UNIT PRICE	UNIT PRICE	AMOUNT
1401036A	1	L.S.	ABANDON SANITARY SEWER		
			_____dollars and _____cents per lump sum	\$	\$
1403501	4	EA.	RESET MANHOLE (SANITARY SEWER)		
			_____dollars and _____cents per each	\$	\$
1403610A	1	L.S.	PUMP STATION DEMOLITION		
			_____dollars and _____cents per lump sum	\$	\$
			<b>ROADWAY AND STREETScape ITEMS TOTAL (EXCLUDE GENERAL ITEMS)</b>		
			_____dollars and _____cents	\$	\$