

Rubber Avenue Reconstruction FY24-B057 NAUGATUCK, CONNECTICUT

ADDENDUM NO. 2

7-6-23

Bidders and interested parties shall take note of the following information regarding the subject Invitation to Bid:

1. Modification of Project Manual – Bid Proposal Form

Please see the attached revised Bid Proposal form. The provided form shall replace the form in the project manual.

2. Project drawings

Please see the attached additional and revised project drawings

DET-15 Details Endwalls

UT-1 – UT-4 Utility Plans

3. Questions, Clarification and Interpretations

Please see the below Questions Clarifications Interpretations:

- a. Please indicate where bid item # 0409001 Fine Milling of Bituminous Concrete (0” to 4”) 300 SY is located.

Response: This is located in the vicinity of station 13+00 over the bridge deck only.

- b. Please clarify Bid Item #0401101 Mat Reinforcement for the Concrete Pavement. Is this for the rebar shown in the stamped concrete truck apron on Sheet No. 009? Usually rebar is paid by the ton on CT DOT projects, not by the SY.

Response: DOT uses this item and unit of measurement specifically for Roundabout Truck Aprons.

- c. Please clarify the following: Bid Item # 0653002 Clean Drainage System is a Lump Sum item. On State DOT projects this item is never bid lump sum. It is always quantified by the LF of a particular size pipe diameter as well as the number of drainage structures. This leaves no confusion as to what constitutes the drainage system. Please break out into new bid items.

Response: The item will remain lump sum.

- d. There are no details on the plans that show how the splitter islands are constructed. Are they granite curb infilled with stamped concrete or brick pavers? Are they flush with the pavement or elevated? What are the radius sizes?

Response: See Sheet 26 - Typ-3 for typical section for Roundabout approach. The median islands will be granite curb infilled with stamped concrete as shown. See Sheet 36 - HWY-8 for splitter island layout, radii, etc.

- e. There is no detail on the face dimension of the mountable granite curb. Please provide the chamfer dimensions.

Response: A detail will be provided in Addendum No. 3 by 7/7/23

**Rubber Avenue Reconstruction
FY24-B057
NAUGATUCK, CONNECTICUT**

- f. There are no details on the plans that show where the brick pavers are located. Are they a part of the sidewalk or the roundabout? What is the pattern?

Response: The brick paver locations are shown sheets LA-1 & LA-2 with a detail provided on LA-5.

- g. Are #5 bent dowel bars required as shown in the granite curb at each side of the stamped concrete truck apron? One side is indicated as optional in the details shown on Sheet No. 009. If so, what is the spacing of these bent dowels?

Response: The #5 bent dowels will not be required at either location.

- h. Sheet S-10 shows Bridge No. 03713 Details. Are the #9 Mechanical Couplers shown on the Proposed Approach Section and Curb Section refer to Bid Item #0602870? Is there concrete removal associated with these and how is it paid?

Response: The concrete removal is incidental and included in Item #0602870.

- i. Where is the work located for Item # 0602973 Bolt Replacement and what size and type bolts are required?

Response: This work is shown on Sheet S-10. The contractor shall match the existing bolt diameters and type after concrete is removed and existing bolts are exposed.

- j. There are no Special Provisions in the Special Provisions in the Specs. for Bid Items #s 130247A, 1302053A, 1303189A, 1303196A, 140350 and 1500210A.1A, 1500209A.

Response: These items have been removed the from contract as they will be performed by the utility companies. See attached revised Bid Proposal Form.

- k. Is it possible to provide drainage only plans for this project? This info. is combined with Utility Relocation Plans and they are extremely cluttered and difficult to decipher what is going on. Also, none of the drainage structures are numbered. Does any of the info. shown on UT-5 Sheet 41 of 115 pertain to the new drainage system? Where are all these structures shown in relation the new drainage system?

Response: See attached and updated UTILITY drawings which remove the unnecessary utility relocation notes.

- l. The Sequence drawings SEQ-1 thru SEQ-5 do not adequately demonstrate how the roundabout work can be completed in sections and still maintain through traffic albeit alternating traffic. There needs to be temporary bypass paving to complete this work in a logical sequence or at least be able to shut down traffic in multiple directions. This involves more right of ways and temporary paving.

Response: The contractor may submit alternate stage construction drawings for review by the engineer, Town and DOT which do not increase additional ROW impacts.

**Rubber Avenue Reconstruction
FY24-B057
NAUGATUCK, CONNECTICUT**

- m. Site No. 2 Hydrodynamic Separator does not have any details on the adjacent bypass manholes. Are these bypass manholes paid separately?

Response: The bypass manholes are to be paid for under the Hydrodynamic Separator Item and may vary depending on the manufacturer's design.

- n. Bid Item #0601039 Modify Bridge Parapet 165 LF does not have a description of the pay item. Is this for the 6" tall CIP concrete curb shown on Sheet S-10? Are the rebar and drill and grout dowels and mechanical couplers paid separately?

Response: Yes, this for the modification to the curb shown on sheet S-10. Bid Items for Mechanical Couplers, Drilling Holes and Grout Dowels, and Bolt Replacement are included in the contract.

- o. Bid Item #0601020A Stamped Concrete does not indicate whether the processed aggregate base, earth excavation and subgrade prep. is paid separately or not.

Response: The bid item includes the PAG, Excavation and subgrade prep., complete and in place.

- p. Item #0751898 Concrete Endwall has no detail sheet describing the size, reinforcing, etc. The detail on Sheet 8 is incorrect and shows a precast concrete flared end section with a cut-off wall instead. This endwall has to be sized for a 60" RCP as shown on Sheet 38 of 115.

Response: See attached detail

- q. Is the sawcutting needed for the installation of the drainage pipe system payable under Item #0202502 Cut Concrete Pavement?

Response: No. The sawcutting is for the removal of the concrete pavement where the concrete pavement is cut perpendicular every +/-20 ft at a length of 30 feet.

- r. Where is the cast-in-place concrete stair shown on Sheet 47 of 115 located and where is the pay item for it?

Response: No. We are working close to several steps which are intended to remain. However, if unforeseen field conditions determine the need for replacement, the detail was provided.

- s. Bid item #0811002 Special Concrete Curbing 300 lf has no details as to size, reinforcing, type of concrete, etc. There is no DOT standard detail sheet that depicts this either.

Response: See Sheet S-3 and S-6 for layout and details.

- t. Do all the drainage structures require granite inlets on them where they abut granite curb?

Response: Yes, the drainage structure should have Type CM Tops with granite inlets.

- u. All work is supposed to be in accordance with CT DOT standards per the latest Form 818 manual and supplements. Do the Town standards supersede any State standards on this project?

Response: No.

**Rubber Avenue Reconstruction
FY24-B057
NAUGATUCK, CONNECTICUT**

- v. Saltguard required on the concrete walks and/or driveways?

Response: Concrete walks and driveways will be installed in accordance with the CTDOT Form 818 and the appropriate Sections.

- w. Is the drainage manhole cover shown on HW-586-10a required or can the standard Town of Naugatuck manhole cover be used?

Response: Yes - CTDOT standard details apply to this project.

- x. What goes between the granite curb and concrete walk at all the bump out areas? Although not all inclusive, in particular between Stations 16+00 to 21+00, 35+00 to 37+00 and 13+50 to 14+50? Is it concrete, brick pavers or grass?

Response: Topsoil and turf establishment will be used in these locations unless otherwise shown or directed by the engineer.

- y. In these same areas there are concrete driveways that extend out the granite curblines. How does the granite curb terminate at a typical concrete driveway? Can you provide a detail for these areas? Is a transition or radius or a combination of both?

Response: The granite curbing will end at the edge top edge of the transition of the concrete apron. See detail on sheet DET-2.

- z. The following bid items are indicated with the A suffix which means they are Special Provisions items. However, there are no special provisions in the bid documents for these items which include #1302047A Reset Gate Boxes, #130205A Reset Water Gates, #1303189A Reset Existing Fire Hydrants, #1303196A Relocate Fire Hydrants, #1500209A Reset Manhole(ELECTRIC) and #1500209A Reset Manhole(TELEPHONE).

Response: These items have been removed from the contract. See revised Bid Proposal Form.

- aa. There are notes on the Utility Plans UT-1 through UT-4 that say Reset Water Gate (TYP) by others. Does this mean that bid item #1302053A will be deleted?

Response: Yes. This item will be deleted. See Revised Bid Proposal Form

- bb. Where are these hydrants shown? Notes on the Utility plans say they are to be relocated by others.

Response: Utility relocation plans by others will be provided prior to the start of construction.

- cc. One of our prospective Electrical/Traffic Signal subcontractors is requesting more information regarding Item #101001, Concrete Handholes, 42 each. They are requesting dimensions of the handhole and acceptable manufacturers.

Response:

Drawing D-1 – Sheet #73 Electrical Details provides information on the Quartzite Handholes which be required.

Rubber Avenue Reconstruction FY24-B057 NAUGATUCK, CONNECTICUT

Traffic signal plan notes indicate 30" x 30" handholes will be used where indicated by (K). All others will be Type II.

- dd. The plans do not show any conductors for the lighting portion of the work and there are no bid items to provide conduit and wire for lighting. Please advise who is responsible and how payment will be made for wiring the decorative light standards, flagpole lights, flush ground lights, and accent lights.

Response: See notes on Electrical drawings for direction.

NOTES:

1. ALL CONDUITS SHALL BE 2" IN DIAMETER, UNLESS OTHERWISE NOTED.
 2. CONTRACTOR SHALL BE RESPONSIBLE FOR DOWNSIZING FEEDERS AT ELECTRICAL DEVICES FOR CONNECTION IN FIELD. FEEDERS HAVE BEEN OVERSIZED FOR VOLTAGE DROP.
 3. A RECESSED WEATHERPROOF GFI RECEPTACLE SHALL BE INSTALLED PER MANUFACTURER STANDARDS IN EACH POLE. WIRING TO BE INSTALLED IN POLE.
 4. EVERSOURCE TO DESIGN FINAL WIRING SCHEDULE AND DETERMINE FINAL UTILITY POLES FOR SERVICE. TRANSFORMERS AND SERVICE RISERS TO BE INSTALLED BASED ON GUIDANCE FROM EVERSOURCE.
 5. CONTRACTOR TO INSTALL PULL CORD AT CONDUIT TO ALLOW FOR EVERSOURCE TO INSTALL THEIR WIRING AND CONNECT TO POWER.
- ee. Consider adding to the 12-month time of completion for this project of at least 6 months. There is a significant amount of work that needs to be done in the time frame allocated, particularly with the large amount of roadway excavation, concrete roadway removal, drainage items, granite curbing, concrete walks /HC ramps, stamped concrete, brick pavers, decorative crosswalks, lighting, traffic signal work, planting, etc. Multiple crews is not suitable for alternating one way traffic and the complexities of the roundabout all contribute to needing more time. Winer shutdown is usually lost time as well.

Response: The time for completion will be extended to 18 months.

- ff. Should bid item #0811002 Special Concrete Curbing have a concrete footing attached to it as it presently is a free-standing unsupported structure?

Response: No. Details on sheet S-3 and S-6 shall apply.

James R. Stewart
Director of Public Works
246 Rubber Ave.
Naugatuck Ct 06770
Jstewart@naugauck-ct.gov
230-720-7072

**BOROUGH OF NAUGATUCK, CONNECTICUT
PROPOSAL FORM - BID SCHEDULE - ADDENDUM 2
LOT/CIIP PROJECT NO. L087-0003
RUBBER AVENUE RECONSTRUCTION
NAUGATUCK, CONNECTICUT**

BIDDER'S NAME: _____
PROPOSAL NUMBER: _____

ITEM	EST. QTY.	UNITS	DESCRIPTION AND WRITTEN UNIT PRICE	UNIT PRICE	AMOUNT
0201001	1	LS	CLEARING AND GRUBBING, at _____ dollars and _____ cents per lump sum	\$	\$
0202000	8888	CY	EARTH EXCAVATION, at _____ dollars and _____ cents per cubic yard	\$	\$
0202100	987	CY	ROCK EXCAVATION, at _____ dollars and _____ cents per cubic yard	\$	\$
0202452A	2	EA	TEST PIT, at _____ dollars and _____ cents per each	\$	\$
0202501	5250	LF	CUT CONCRETE PAVEMENT, at _____ dollars and _____ cents per linear foot	\$	\$
0202502	10650	SY	REMOVAL OF CONCRETE PAVEMENT, at _____ dollars and _____ cents per square yard	\$	\$
0202529	400	LF	CUT BITUMINOUS CONCRETE PAVEMENT, at _____ dollars and _____ cents per linear foot	\$	\$
0209001	16732	SY	FORMATION OF SUBGRADE, at _____ dollars and _____ cents per square yard	\$	\$
0213100	200	CY	GRANULAR FILL, at _____ dollars and _____ cents per cubic yard	\$	\$
0219001	1575	LF	SEDIMENTATION CONTROL SYSTEM, at _____ dollars and _____ cents per linear foot	\$	\$
0219011A	40	EA	SEDIMENTATION CONTROL SYSTEM AT CATCH BASIN, at _____ dollars and _____ cents per each	\$	\$
0304002	4750	CY	PROCESSED AGGREGATE BASE, at _____ dollars and _____ cents per cubic yard	\$	\$
0401101	470	SY	MAT REINFORCEMENT FOR CONCRETE PAVEMENT, at _____ dollars and _____ cents per square yard	\$	\$

ITEM	EST. QTY.	UNITS	DESCRIPTION AND WRITTEN UNIT PRICE	UNIT PRICE	AMOUNT
0401201	350	LF	TRANSVERSE CONTRACTION JOINT, at _____dollars and _____cents per linear foot	\$	\$
0406002	1330	SY	TEMPORARY PAVEMENT, at _____dollars and _____cents per square yard	\$	\$
0406159	490	TON	PMA S0.5, at _____dollars and _____cents per ton	\$	\$
0406160	735	TON	PMA S1.0, at _____dollars and _____cents per ton	\$	\$
0406170	3750	TON	HMA S1.0, at _____dollars and _____cents per ton	\$	\$
0406171	1900	TON	HMA S0.5, at _____dollars and _____cents per ton	\$	\$
0406236	3280	GAL	MATERIAL FOR TACK COAT, at _____dollars and _____cents per gallon	\$	\$
0406600	1900	TON	MATERIAL TRANSFER VEHICLE, at _____dollars and _____cents per ton	\$	\$
0406999A	1	EST	ASPHALT ADJUSTMENT COST, at _____dollars and _____cents estimated	\$10,000	\$10,000
0409001	300	SY	FINE MILLING OF BITUMINOUS CONCRETE (0" TO 4"), at _____dollars and _____cents per square yard	\$	\$
0503274	150	LF	REMOVE, STORE AND RE-ASSEMBLE HANDRAIL _____dollars and _____cents per linear foot	\$	\$
0507206	10	EA	TEMPORARY TYPE 'C-L' CATCH BASIN TOP, at _____dollars and _____cents per each	\$	\$
0507301	1	EA	TYPE 'C' DROP INLET, at _____dollars and _____cents per each	\$	\$
0586001.10	24	EA	TYPE 'C' CATCH BASIN - 0' -10' DEEP, at _____dollars and _____cents per each	\$	\$
0586001.20	1	EA	TYPE 'C' CATCH BASIN - 0' -20' DEEP, at _____dollars and _____cents per each	\$	\$
0586003.10	2	EA	TYPE 'C' CATCH BASIN DOUBLE GRATE TYPE I - 0'-10' DEEP, at _____dollars and _____cents per each	\$	\$

ITEM	EST. QTY.	UNITS	DESCRIPTION AND WRITTEN UNIT PRICE	UNIT PRICE	AMOUNT
0586005.10	3	EA	TYPE 'C' CATCH BASIN DOUBLE GRATE TYPE II - 0'-10' DEEP, at _____dollars and _____cents per each	\$	\$
0586013.10	11	EA	OFFSET TYPE 'C' CATCH BASIN - 0'-10' DEEP, at _____dollars and _____cents per each	\$	\$
0586017.10	1	EA	OFFSET TYPE 'C' CATCH BASIN DOUBLE GRATE TYPE I - 0'-10' DEEP, at _____dollars and _____cents per each	\$	\$
0586040.10	1	EA	TYPE 'C-L' CATCH BASIN - 0'-10' DEEP, at _____dollars and _____cents per each	\$	\$
0586044.10	1	EA	TYPE 'C-L' CATCH BASIN DOUBLE GRATE TYPE II - 0'-10' DEEP, at _____dollars and _____cents per each	\$	\$
0586500.10	5	EA	MANHOLE - 0'-10' DEEP, at _____dollars and _____cents per each	\$	\$
0586501.08	3	EA	MANHOLE (8' DIAMETER) - 0'-10' DEEP, at _____dollars and _____cents per each	\$	\$
0586651	5	EA	RESET MANHOLE (STORM), at _____dollars and _____cents per each	\$	\$
0586703	1	EA	CONVERT CATCH BASIN TO MANHOLE, at _____dollars and _____cents per each	\$	\$
0586750	3	EA	TYPE 'C' CATCH BASIN TOP, at _____dollars and _____cents per each	\$	\$
0586790.10	10	EA	REMOVE DRAINAGE STRUCTURE - 0'-10' DEEP, at _____dollars and _____cents per linear each	\$	\$
0586850.01A	1	EA	HYDRODYNAMIC SEPARATOR (SITE NO. 1), at _____dollars and _____cents per each	\$	\$
0586850.02A	1	EA	HYDRODYNAMIC SEPARATOR (SITE NO. 2), at _____dollars and _____cents per each	\$	\$
0586850.03A	1	EA	HYDRODYNAMIC SEPARATOR (SITE NO. 3), at _____dollars and _____cents per each	\$	\$
0601039	165	LF	MODIFY BRIDGE PARAPET, at _____dollars and _____cents per linear foot	\$	\$

ITEM	EST. QTY.	UNITS	DESCRIPTION AND WRITTEN UNIT PRICE	UNIT PRICE	AMOUNT
0601020A	4300	SF	STAMPED CONCRETE, at _____dollars and _____cents per square foot	\$	\$
0601445A	1	LS	EMBANKMENT WALL (SITE NO. 1), at _____dollars and _____cents per lump sum	\$	\$
0601446A	1	LS	EMBANKMENT WALL (SITE NO. 2), at _____dollars and _____cents per lump sum	\$	\$
0601448A	1	LS	EMBANKMENT WALL (SITE NO. 4), at _____dollars and _____cents per lump sum	\$	\$
0601449A	1	LS	EMBANKMENT WALL (SITE NO. 5), at _____dollars and _____cents per lump sum	\$	\$
0601605	110	LF	REMOVE AND REPLACE ASPHALTIC PLUG EXPANSION JOINT, at _____dollars and _____cents per linear foot	\$	\$
0601744.44	18	CY	PCC004467 CONCRETE _____dollars and _____cents per cubic yard	\$	\$
0602030	1500	LBS	DEFORMED STEEL BARS – GALVANIZED _____dollars and _____cents per pound	\$	\$
0602870	125	EA	#9 MECHANICAL COUPLERS _____dollars and _____cents per each	\$	\$
0602910	860	EA	DRILLING HOLES AND GROUT DOWELS _____dollars and _____cents per each	\$	\$
0602973	125	EA	BOLT REPLACEMENT _____dollars and _____cents per each	\$	\$
0603661A	1	LS	LOCALIZED PAINT REMOVAL AND FIELD PAINTING OF EXISTING STEEL (SITE NO. 1) _____dollars and _____cents per lump sum	\$	\$
0653002	1	LS	CLEAN DRAINAGE SYSTEM, at _____dollars and _____cents per lump sum	\$	\$
0686000.12	600	LF	12" R.C. PIPE - 0'-10' DEEP, at _____dollars and _____cents per linear foot	\$	\$
0686000.15	1200	LF	15" R.C. PIPE - 0'-10' DEEP, at _____dollars and _____cents per linear foot	\$	\$

ITEM	EST. QTY.	UNITS	DESCRIPTION AND WRITTEN UNIT PRICE	UNIT PRICE	AMOUNT
0686000.18	1250	LF	18" R.C. PIPE - 0'-10' DEEP, at _____dollars and _____cents per linear foot	\$	\$
0686000.24	370	LF	24" R.C. PIPE - 0'-10' DEEP, at _____dollars and _____cents per linear foot	\$	\$
0686000.54	10	LF	54" R.C. PIPE - 0'-10' DEEP, at _____dollars and _____cents per linear foot	\$	\$
0686001.60	130	LF	60" R.C. PIPE - 0'-10' DEEP, at _____dollars and _____cents per linear foot	\$	\$
0686002.12	50	LF	12" R.C. PIPE (CLASS V) - 0'-10' DEEP, at _____dollars and _____cents per linear foot	\$	\$
0686200.10	5	LF	10" POLYVINYL CHLORIDE PIPE - 0'-10' DEEP, at _____dollars and _____cents per linear foot	\$	\$
0686200.12	25	LF	12" POLYVINYL CHLORIDE PIPE - 0'-10' DEEP, at _____dollars and _____cents per linear foot	\$	\$
0686950.10	170	LF	REMOVE EXISTING PIPE - 0'-10' DEEP, at _____dollars and _____cents per linear foot	\$	\$
0703010	35	CY	STANDARD RIPRAP, at _____dollars and _____cents per cubic yard	\$	\$
0707009A	145	SY	MEMBRANE WATERPROOFING (COLD LIQUID ELASTOMERIC), at _____dollars and _____cents per square yard	\$	\$
0751898	1	EA	CONCRETE ENDWALL, at _____dollars and _____cents per each	\$	\$
0811002	300	LF	SPECIAL CONCRETE CURBING, at _____dollars and _____cents per linear foot	\$	\$
0813012	7050	LF	5" X 18" GRANITE STONE CURBING _____dollars and _____cents per linear foot	\$	\$
0813013	1230	LF	5" X 18" GRANITE CURVED STONE CURBING _____dollars and _____cents per linear foot	\$	\$
0813455	2	EA	RADIAL GRANITE CURB DRIVEWAY RETURN, at _____dollars and _____cents per each	\$	\$

ITEM	EST. QTY.	UNITS	DESCRIPTION AND WRITTEN UNIT PRICE	UNIT PRICE	AMOUNT
0815001	100	LF	BITUMINOUS CONCRETE LIP CURBING, at _____ dollars and _____ cents per linear foot	\$	\$
0816002	255	LF	CURVED GRANITE SLOPE CURBING, at _____ dollars and _____ cents per linear foot	\$	\$
0904051A	100	LF	3 TUBE CURB MOUNTED BRIDGE RAIL _____ dollars and _____ cents per linear foot	\$	\$
0910300	100	LF	METAL BEAM RAIL (R-B MASH), at _____ dollars and _____ cents per linear foot	\$	\$
0911924	1	EA	R-B END ANCHORAGE - TYPE II, at _____ dollars and _____ cents per each	\$	\$
0913003	80	LF	4' POLYVINYL CHLORIDE CHAIN LINK FENCE _____ dollars and _____ cents per linear foot	\$	\$
0914015A	125	LF	ORNAMENTAL METAL FENCE (3.5' HIGH) _____ dollars and _____ cents per linear foot	\$	\$
0921001	38750	SF	CONCRETE SIDEWALK, at _____ dollars and _____ cents per square foot	\$	\$
0921005	3200	SF	CONCRETE SIDEWALK RAMP, at _____ dollars and _____ cents per square foot	\$	\$
0921016A	1450	SF	UNIT PAVERS, at _____ dollars and _____ cents per square foot	\$	\$
0921048	480	SF	DETECTABLE WARNING SURFACE, at _____ dollars and _____ cents per square foot	\$	\$
0922050A	5880	SF	DECORATIVE CROSSWALK, at _____ dollars and _____ cents per square foot	\$	\$
0922500	2300	SY	BITUMINOUS CONCRETE DRIVEWAY (COMMERCIAL), at _____ dollars and _____ cents per square yard	\$	\$
0922501	50	SY	BITUMINOUS CONCRETE DRIVEWAY, at _____ dollars and _____ cents per square yard	\$	\$
0922503	550	SY	GRAVEL DRIVEWAY, at _____ dollars and _____ cents per square yard	\$	\$
0924002	280	CY	CONCRETE DRIVEWAY RAMP, at _____ dollars and _____ cents per cubic yard	\$	\$
0939001	300	HR	SWEEPING FOR DUST CONTROL, at _____ dollars and _____ cents per hour	\$	\$

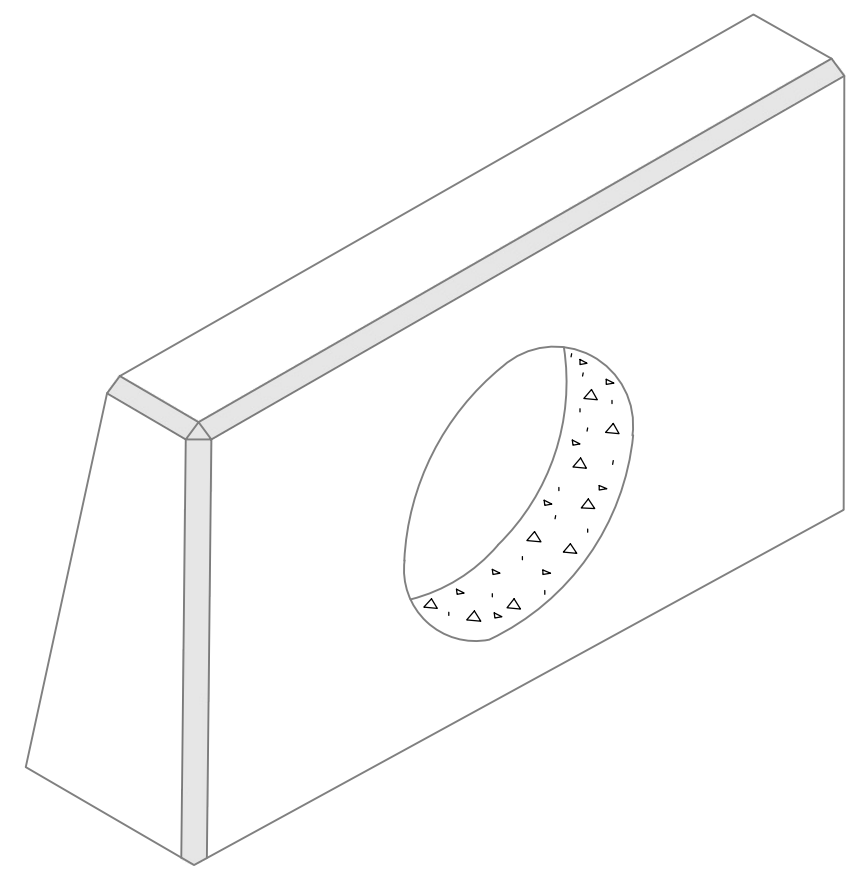
ITEM	EST. QTY.	UNITS	DESCRIPTION AND WRITTEN UNIT PRICE	UNIT PRICE	AMOUNT
0942001	5	TON	CALCIUM CHLORIDE FOR DUST CONTROL, at _____ dollars and _____ cents per ton	\$	\$
0944000	3700	SY	FURNISHING AND PLACING TOPSOIL, at _____ dollars and _____ cents per square yard	\$	\$
0949003A	1	LS	FURNISHING, PLANTING AND MULCHING TREES, SHRUBS, VINES AND GROUND COVER PLANTS, at _____ dollars and _____ cents per lump sum	\$	\$
0949038	5	EA	CERCIS CANADENSIS "OAKLOHOMA", EASTERN REDBUD, 2.5" CAL. B.B., at _____ dollars and _____ cents per each	\$	\$
0949053	7	EA	CRATAEGUS CRUSGALLI "INERMIS", THORNLESS COCKSPUR HAWTHORN, 3" - 3.5", CAL. B.B., at _____ dollars and _____ cents per each	\$	\$
0949211	13	EA	GINKGO BILOBA "AUTUMN GOLD" TM, AUTUMN GOLD MAIDENHAIR TREE, 3" - 3.5", CAL. B.B., at _____ dollars and _____ cents per each	\$	\$
0949232	3	EA	ILEX X MESERVEAE "CHINA BOY" TM, CHINA BOY HOLLY, 5 GAL. #5, at _____ dollars and _____ cents per each	\$	\$
0949233	43	EA	ILEX X MESERVEAE "CHINA GIRL" TM, CHINA GIRL HOLLY, 5 GAL. #5, at _____ dollars and _____ cents per each	\$	\$
0949262	199	EA	JUNIPERUS HORIZONTALIS "BAR HARBOR", BAR HARBOR CREEPING JUNIPER, 5 GAL. #5, at _____ dollars and _____ cents per each	\$	\$
0949352	1	EA	PRUNUS X "ACCOLADE", ACCOLADE FLOWERING CHERRY, 3" - 3.5", CAL. B.B., at _____ dollars and _____ cents per each	\$	\$
0949356	9	EA	PRUNUS SERRULATA "KWANZAN", JAPANESE FLOWERING CHERRY, 3" - 3.5", CAL. B.B., at _____ dollars and _____ cents per each	\$	\$
0949369	7	EA	AMELANCHIER GRANDIFLORA "AUTUMN BRILLIANCE" SERVICEBERRY 3" - 3.5" CAL. B.B., at _____ dollars and _____ cents per each	\$	\$
0949550	78	EA	HERMEROCALLIS "SUN DRIED TOMATOES" SUN DRIED TOMATOES DAYLILY, 1 GAL., at _____ dollars and _____ cents per each	\$	\$
0949553	221	EA	LIRIOPE MUSCARI "BIG BLUE", BIG BLUE LILYTURF, 1 GAL., at _____ dollars and _____ cents per each	\$	\$

ITEM	EST. QTY.	UNITS	DESCRIPTION AND WRITTEN UNIT PRICE	UNIT PRICE	AMOUNT
0949566	78	EA	HEMEROCALLIS "HAPPY RETURNS", HAPPY RETURNS DAYLILY, 1 GAL., at _____ dollars and _____ cents per each	\$	\$
0949853	7	EA	CORNUS KOUSA "EVERBLOOM", KOUSA DOGWOOD, 2.5" CAL. B.B., at _____ dollars and _____ cents per each	\$	\$
0949996	10	EA	ZELKOVA SERRATA "AUTUM GLOW", AUTUMN GLOW JAPANESE ZELKOVA, 3" - 3.5", CAL. B.B., at _____ dollars and _____ cents per each	\$	\$
0950005	3700	SY	TURF ESTABLISHMENT, at _____ dollars and _____ cents per square yard	\$	\$
0950039	1375	SY	EROSION CONTROL MATTING TYPE D, at _____ dollars and _____ cents per square yard	\$	\$
0969062A	18	MO.	CONSTRUCTION FIELD OFFICE, MEDIUM, at _____ dollars and _____ cents per month	\$	\$
0970006	1	EST.	TRAFFICPERSON (MUNICIPAL POLICE OFFICER), at _____ dollars and _____ cents per estimated cost	\$550,000	\$550,000
0970007	200	HR.	TRAFFICPERSON (UNIFORMED FLAGGER), at _____ dollars and _____ cents per hour	\$	\$
0971001A	1	LS	MAINTENANCE AND PROTECTION OF TRAFFIC, at _____ dollars and _____ cents per lump sum	\$	\$
0975004	1	LS	MOBILIZATION AND PROJECT CLOSEOUT, at _____ dollars and _____ cents per lump sum	\$	\$
0976002	2000	DAY	BARRICADE WARNING LIGHTS - HIGH INTENSITY, at _____ dollars and _____ cents per day	\$	\$
0977001	40	EA	TRAFFIC CONE, at _____ dollars and _____ cents per each	\$	\$
0978002	160	EA	TRAFFIC DRUM, at _____ dollars and _____ cents per each	\$	\$
0979003	10	EA	CONSTRUCTION BARRICADE TYPE III, at _____ dollars and _____ cents per each	\$	\$
0979004A	10	EA	CONSTRUCTION BARRICADE DETECTABLE, at _____ dollars and _____ cents per each	\$	\$
0980020	1	LS	CONSTRUCTION SURVEYING, at _____ dollars and _____ cents per lump sum	\$	\$
0981101A	20	EA	OPPOSING TRAFFIC LANE DIVIDER, at _____ dollars and _____ cents per each	\$	\$
0992088A	1	EA	FLAGPOLES, at _____ dollars and _____ cents per each	\$	\$

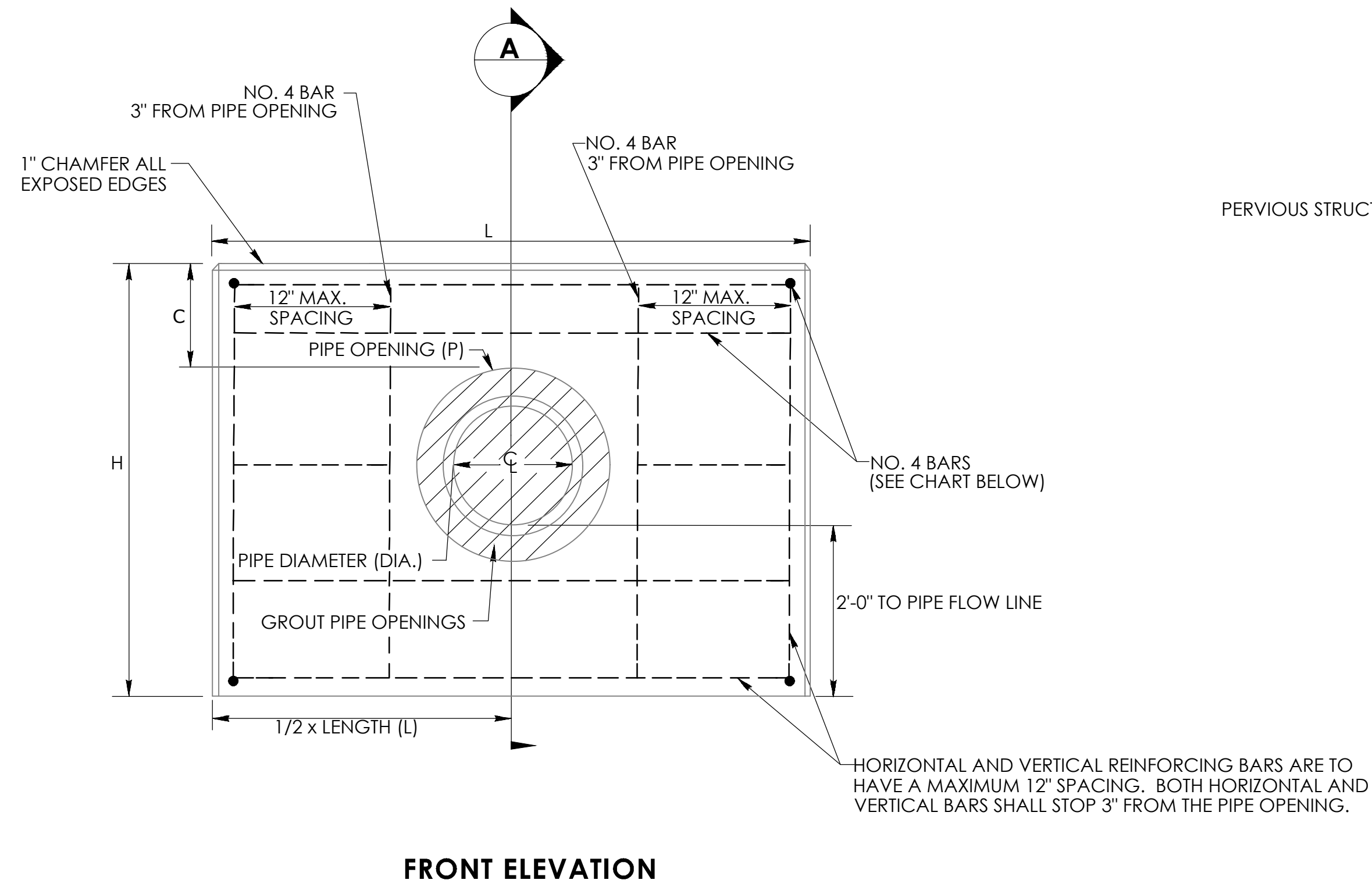
ITEM	EST. QTY.	UNITS	DESCRIPTION AND WRITTEN UNIT PRICE	UNIT PRICE	AMOUNT
1001001	4300	LF	TRENCHING AND BACKFILLING, at _____ dollars and _____ cents linear foot	\$	\$
1002103	30	EA	LIGHT STANDARD FOUNDATION, at _____ dollars and _____ cents per each	\$	\$
1002203	4	EA	TRAFFIC CONTROL FOUNDATION - PEDESTAL - TYPE I, at _____ dollars and _____ cents per each	\$	\$
1003621A	30	EA	DECORATIVE LIGHT STANDARD, at _____ dollars and _____ cents per each	\$	\$
1004913A	3	EA	FLAGPOLE LIGHTS, at _____ dollars and _____ cents per each	\$	\$
1004914A	15	EA	FLUSH GROUND LIGHTS, at _____ dollars and _____ cents per each	\$	\$
1004915A	4	EA	ACCENT LIGHTS, at _____ dollars and _____ cents per each	\$	\$
1008115	75	LF	2" RIGID METAL CONDUIT IN TRENCH, at _____ dollars and _____ cents per linear foot	\$	\$
1008127	5100	LF	2" PVC CONDUIT IN TRENCH, at _____ dollars and _____ cents per linear foot	\$	\$
1008215	775	LF	2" RIGID METAL CONDUIT UNDER ROADWAY, at _____ dollars and _____ cents per linear foot	\$	\$
1008908A	100	LF	CLEAN EXISTING CONDUIT, at _____ dollars and _____ cents per linear foot	\$	\$
1010001	42	EA	CONCRETE HANDHOLE, at _____ dollars and _____ cents per each	\$	\$
1010060A	3	EA	CLEAN EXISTING CONCRETE HANDHOLE, at _____ dollars and _____ cents per each	\$	\$
1102002	4	EA	8' ALUMINUM PEDESTAL, at _____ dollars and _____ cents per each	\$	\$
1103048	2	EA	PAINT EXISTING STEEL SPAN POLE, at _____ dollars and _____ cents per each	\$	\$
1106001A	4	EA	1 WAY PEDESTRIAN SIGNAL PEDESTAL MOUNTED, at _____ dollars and _____ cents per each	\$	\$
1107011A	4	EA	ACCESSIBLE PEDESTRIAN SIGNAL AND DETECTOR, at _____ dollars and _____ cents per each	\$	\$

ITEM	EST. QTY.	UNITS	DESCRIPTION AND WRITTEN UNIT PRICE	UNIT PRICE	AMOUNT
1107002	4	EA	PEDESTRIAN PUSH BUTTON AND SIGN PEDESTAL MOUNTED, at _____ dollars and _____ cents per each	\$	\$
1108163A	1	EA	MODIFY EXISTING CONTROLLER, at _____ dollars and _____ cents per each	\$	\$
1111201A	1	LS	TEMPORARY DETECTION (SITE NO. 1), at _____ dollars and _____ cents per lump sum	\$	\$
1112284A	1	EA	VEHICLE DETECTION MONITOR, at _____ dollars and _____ cents per each	\$	\$
1112286A	1	EA	360-DEGREE CAMERA ASSEMBLY, at _____ dollars and _____ cents per each	\$	\$
1112287A	1	EA	360-DEGREE VIDEO DETECTION PROCESSOR, at _____ dollars and _____ cents per each	\$	\$
1113103	175	LF	7 CONDUCTOR NO. 14 CABLE, at _____ dollars and _____ cents per linear foot	\$	\$
1113725A	115	LF	23 AWG 4 TWISTED PAIR CATEGORY 6 CABLE, at _____ dollars and _____ cents per linear foot	\$	\$
1118012A	1	LS	REMOVAL AND/OR RELOCATION OF TRAFFIC SIGNAL _____ dollars and _____ cents per lump sum	\$	\$
1118051A	1	LS	TEMPORARY SIGNALIZATION (SITE NO. 1), at _____ dollars and _____ cents per lump sum	\$	\$
1131002	960	DAY	REMOTE CONTROL CHANGEABLE MESSAGE SIGN, at _____ dollars and _____ cents per day	\$	\$
1206022A	1	EA	LOTICIP PROJECT SIGN, at _____ dollars and _____ cents per each	\$	\$
1206023A	1	LS	REMOVAL AND RELOCATION OF EXISTING SIGNS, at _____ dollars and _____ cents per lump sum	\$	\$
1208931A	300	SF	SIGN FACE - SHEET ALUMINUM (TYPE IX RETROREFLECTIVE _____ dollars and _____ cents per square foot	\$	\$
1208937A	460	SF	SIGN FACE - SHEET ALUMINUM (TYPE XI RETROREFLECTIVE SHEETING), at _____ dollars and _____ cents per square foot	\$	\$

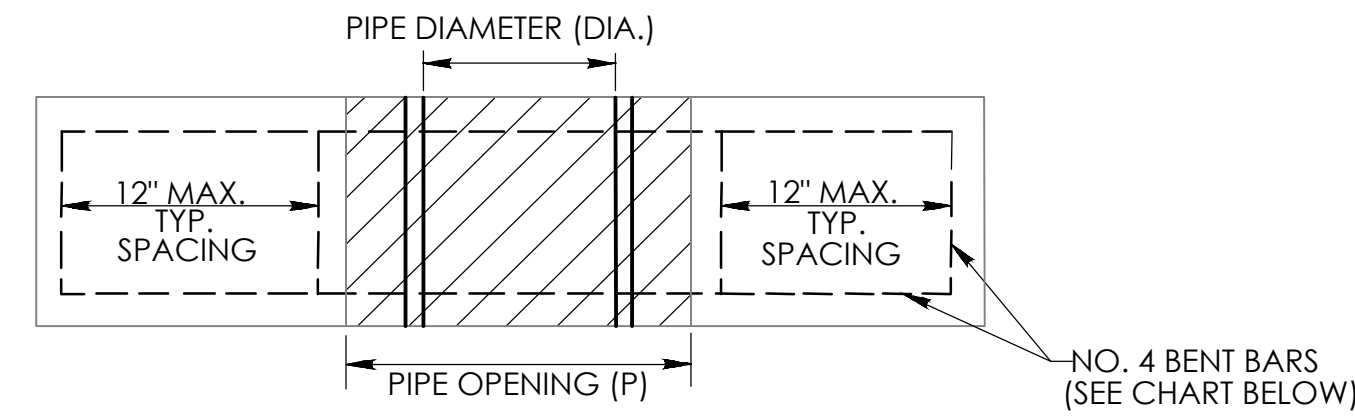
ITEM	EST. QTY.	UNITS	DESCRIPTION AND WRITTEN UNIT PRICE	UNIT PRICE	AMOUNT
1208935	1	EA	NAUGATUCK SIGN, at _____ dollars and _____ cents per each	\$	\$
1209114	10950	LF	HOT-APPLIED PAVEMENT MARKINGS 4" YELLOW, at _____ dollars and _____ cents per linear foot	\$	\$
1209124	11850	LF	HOT-APPLIED PAVEMENT MARKINGS 4" WHITE, at _____ dollars and _____ cents per linear foot	\$	\$
1209128	340	LF	HOT-APPLIED PAVEMENT MARKINGS 8" WHITE, at _____ dollars and _____ cents per linear foot	\$	\$
1209129	300	LF	HOT-APPLIED PAVEMENT MARKINGS 12" WHITE, at _____ dollars and _____ cents per linear foot	\$	\$
1209131	1200	SF	HOT-APPLIED PAINTED LEGEND, ARROWS AND MARKINGS, at _____ dollars and _____ cents per square foot	\$	\$
1210101	7900	LF	4" WHITE EPOXY RESIN PAVEMENT MARKINGS, at _____ dollars and _____ cents per linear foot	\$	\$
1210102	7300	LF	4" YELLOW EPOXY RESIN PAVEMENT MARKINGS, at _____ dollars and _____ cents per linear foot	\$	\$
1210104	225	LF	8" WHITE EPOXY RESIN PAVEMENT MARKINGS, at _____ dollars and _____ cents per linear foot	\$	\$
1210105	800	SF	EPOXY RESIN PAVEMENT MARKINGS, SYMBOLS AND LEGENDS, at _____ dollars and _____ cents per square foot	\$	\$
1210106	200	LF	12" WHITE EPOXY RESIN PAVEMENT MARKINGS, at _____ dollars and _____ cents per linear foot	\$	\$
1220027	300	SF	CONSTRUCTION SIGNS, at _____ dollars and _____ cents per square foot	\$	\$
1403501A	24	EA	RESET MANHOLE (SANITARY), at _____ dollars and _____ cents per each	\$	\$
1803300	1	EA	IMPACT ATTENUATION SYSTEM (TANGENTIAL), at _____ dollars and _____ cents per each	\$	\$



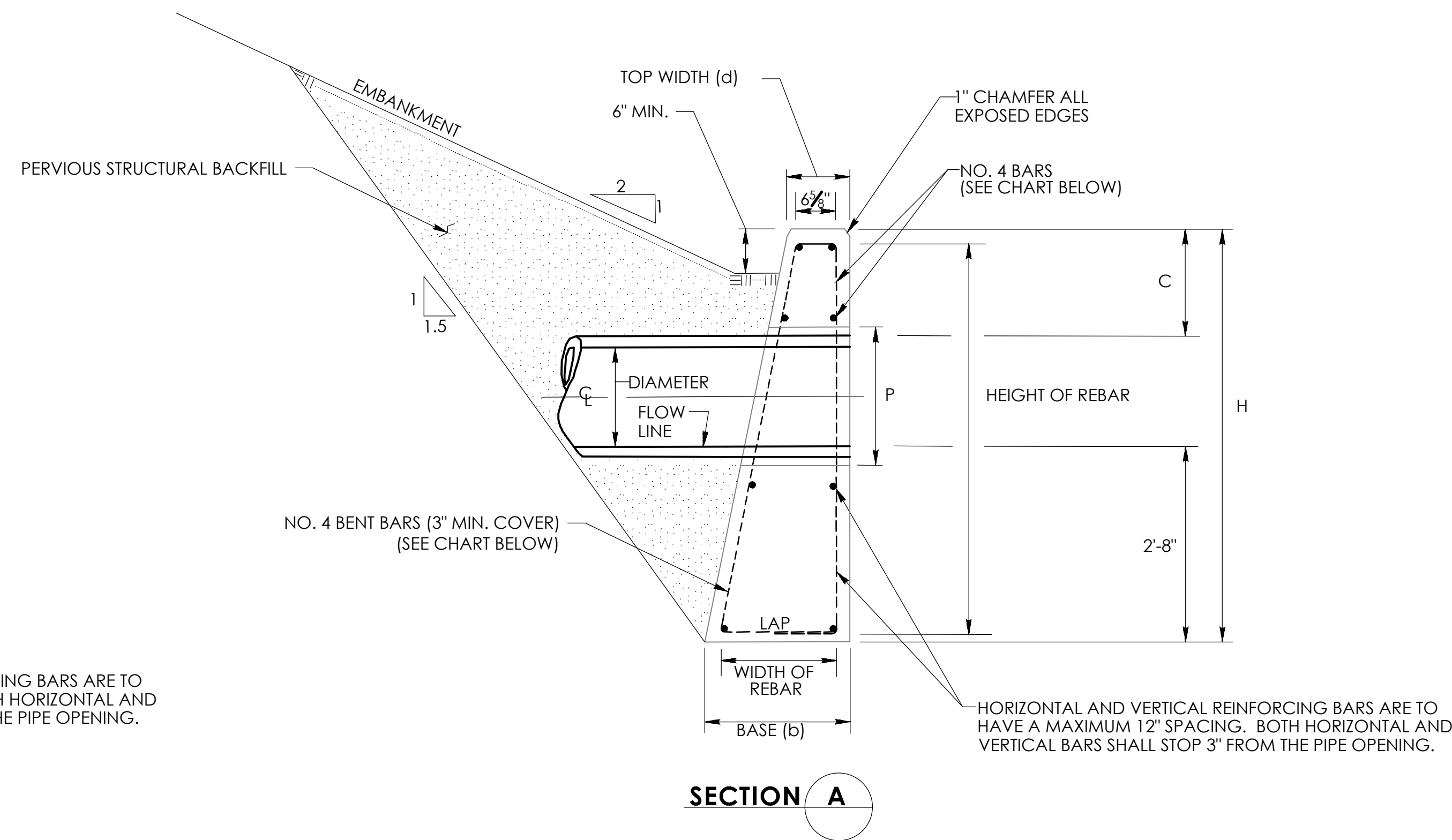
STRAIGHT ENDWALL



FRONT ELEVATION



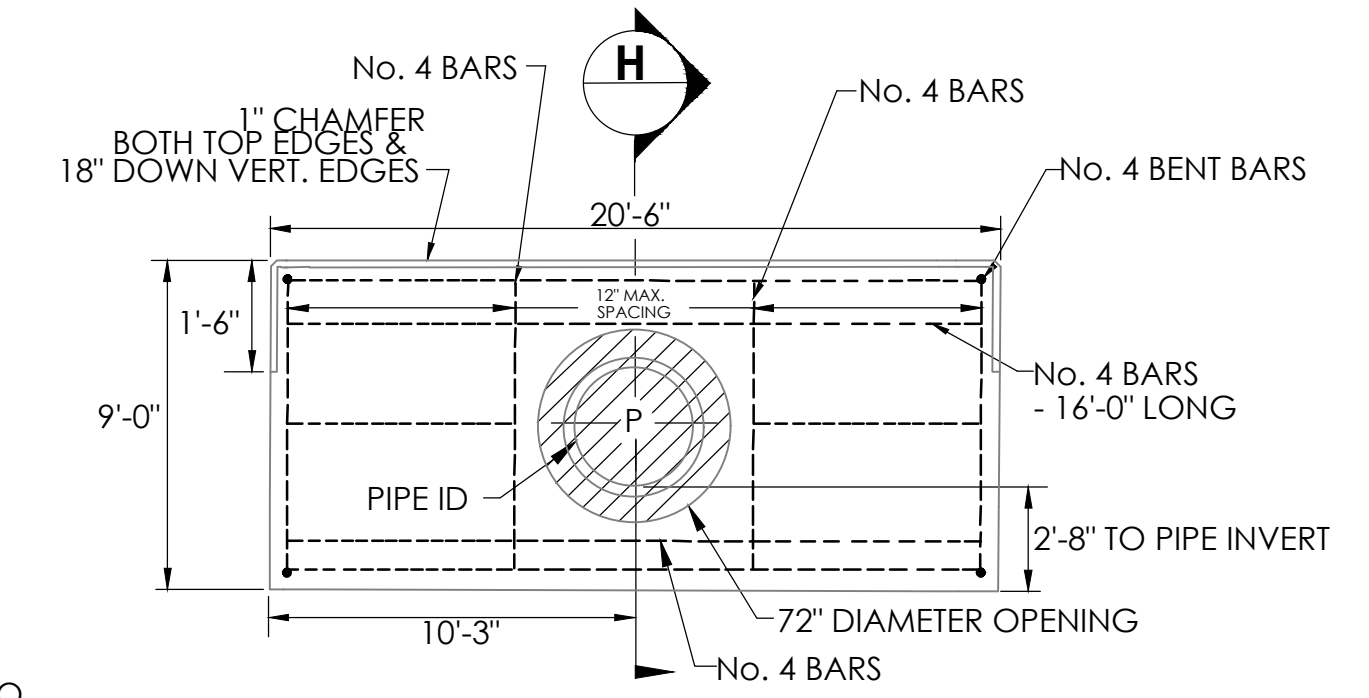
PLAN



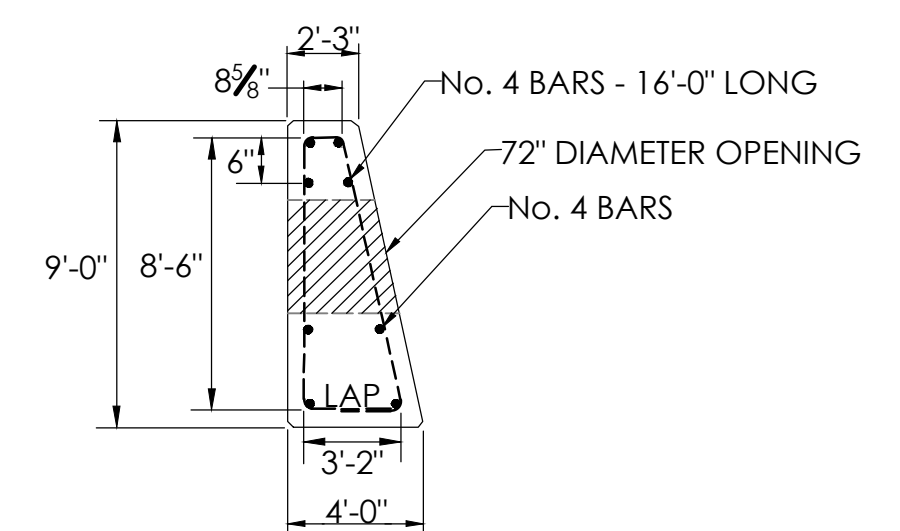
SECTION A

GENERAL NOTES:

1. PIPE OPENING DIMENSIONS ARE NOMINAL (SEE CHART)*.
2. ALL REINFORCING BARS SHALL HAVE 3" COVER MIN.
3. ALL REINFORCING BARS ARE TO BE TIED NOT WELDED.
4. WET SETTING OF ANY STEEL IS NOT PERMITTED.
5. REINFORCING STEEL SHALL CONFORM TO THE REQUIREMENTS OF ASTM A615, GRADE 60 AND SHALL BE GALVANIZED IN ACCORDANCE WITH ASTM A767, CLASS 1.
6. ALL BARS SHALL STOP 3" FROM THE PIPE OPENING AND HAVE 12" MAX. SPACING.



FRONT ELEVATION (FOR 60" RCP)



SECTION H (FOR 60" RCP)

CONCRETE								REINFORCING STEEL				
PIPE DIAMETER (DIA.)	CLEARANCE (C)	*PIPE OPENINGS (P)	TOTAL HEIGHT (H)	LENGTH (L)	TOP WIDTH (d)	BASE (b)	VOL.	PIPE DIAMETER (DIA.)	NO. 4 BENT BARS	NO. 4 BARS - (NOMINAL LENGTH)	HEIGHT OF REBAR	WIDTH OF REBAR
60"	16"	72"	9'-0"	20'-6"	2'-3"	4'-0"	x.xx	60"	18	20 - (20'-0")	8'-8"	3'-2 1/2"

NEW SHEET ADDED BY ADDENDUM NO. 1

No.	Date	Dr. By	Ch. By	App. By	Description
		A	P	R	O
					V
					E
					D

REGISTERED PROFESSIONAL ENGINEER
 DATE

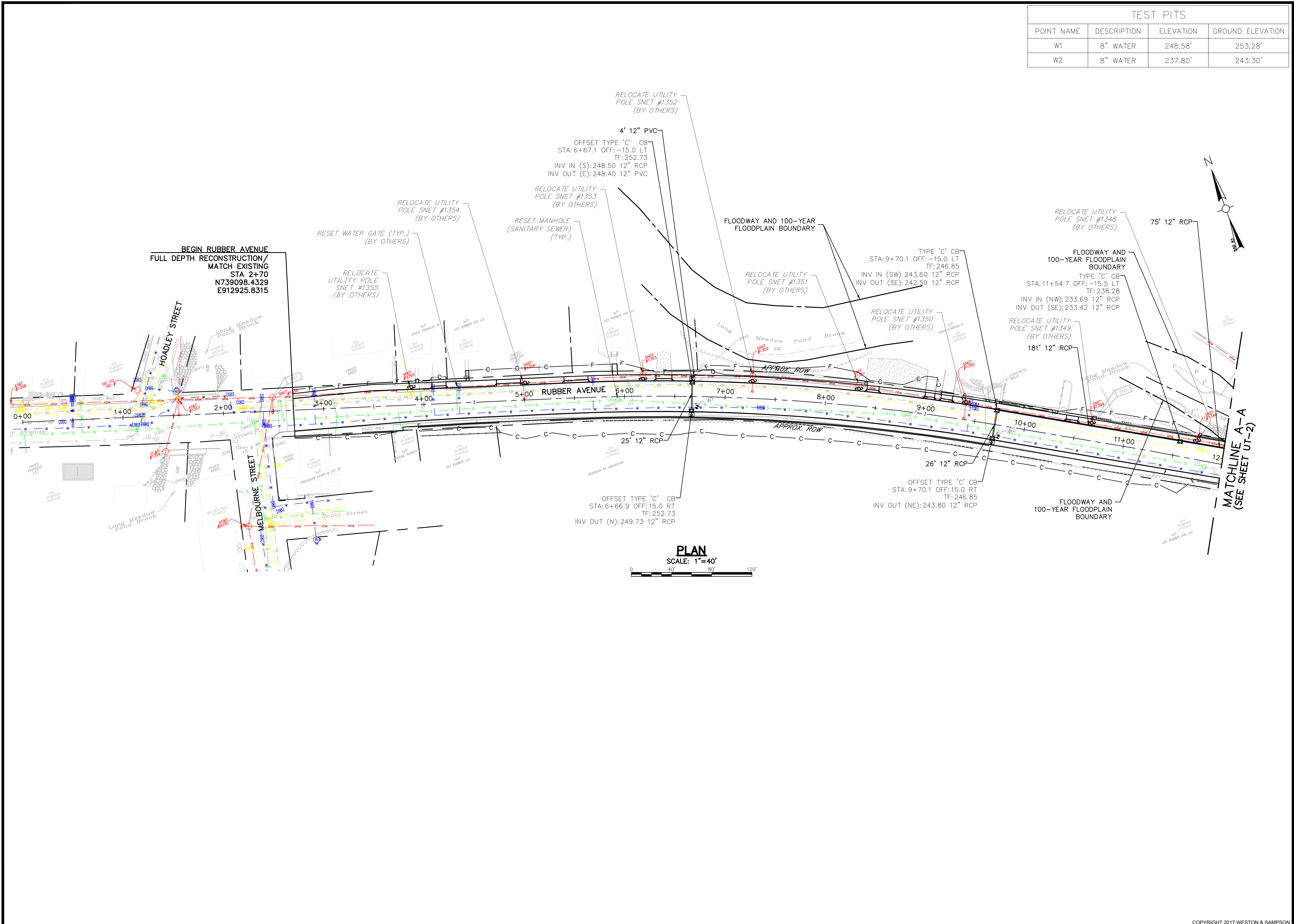
CHK. BY	APP. BY	LAS
DK	KAC	
LEC		

BOROUGH OF NAUGATUCK
 RUBBER AVENUE RECONSTRUCTION
 DETAIL ENDWALLS

CONTRACT	JOB NO.	DR. BY	CHK. BY	APP. BY
- AS SHOWN	1087-0003	DK	LEC	LAS
CADD NO.	FILE NO.			

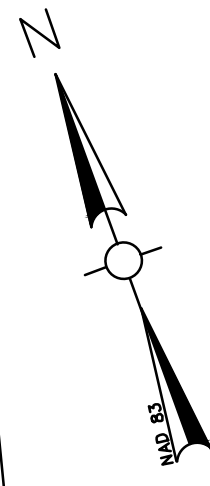
DET-15
 SHEET OF

P:\CT\Wauson\CT\180733_Rubber Ave Reconstruction\CAD\Water\Av_Utility_ADU-1.dwg



TEST PITS			
POINT NAME	DESCRIPTION	ELEVATION	GROUND ELEVATION
W1	8" WATER	248.58'	253.28'
W2	8" WATER	237.80'	243.30'

PLAN
SCALE: 1"=40'



Weston & Sampson
712 Brook Street, Suite 103, Rocky Hill, CT 06067
860.513.1473
www.westonandsampson.com

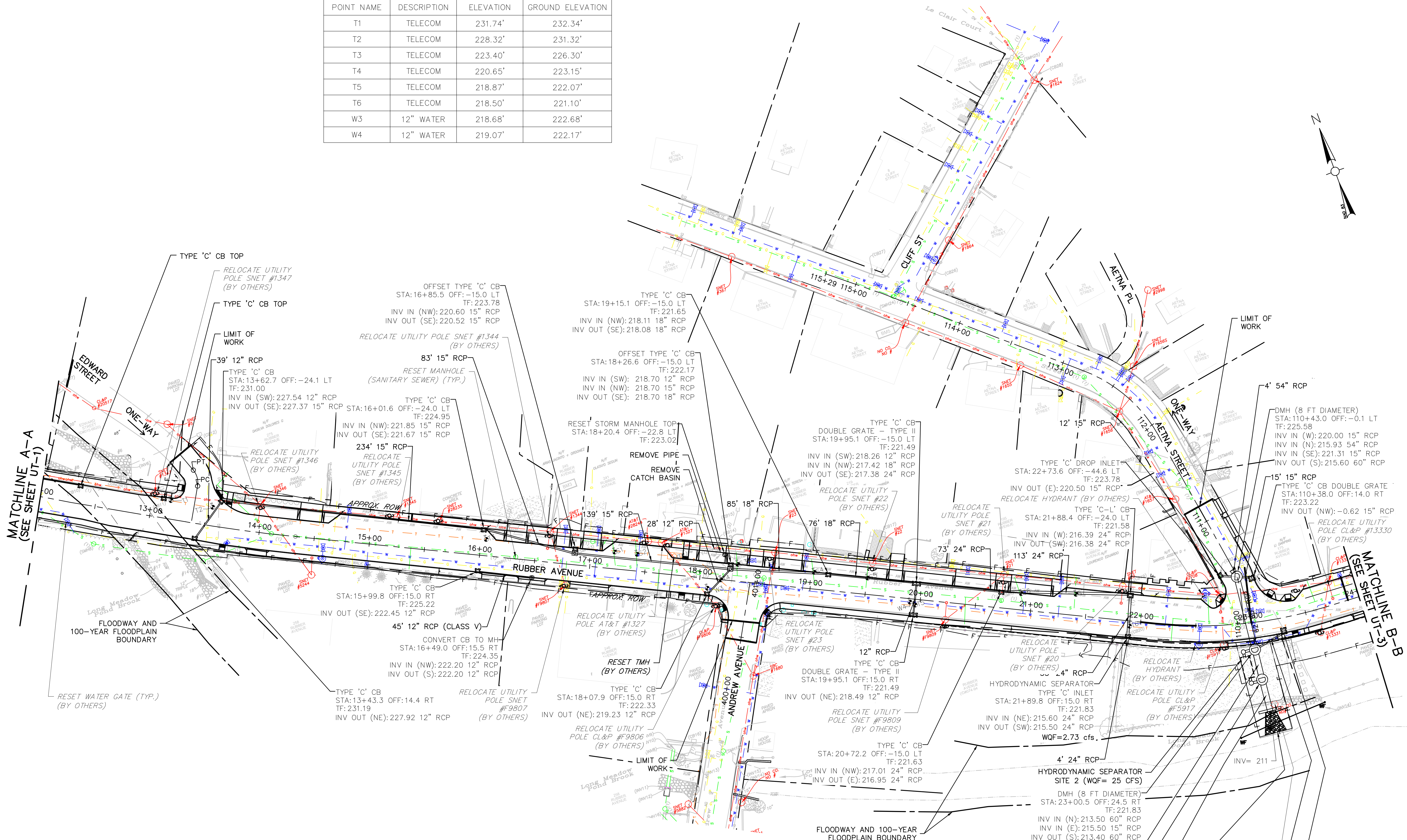
No.	Date	Dr. By	Chk. By	App. By	Description
1	6/22/23	LEC	KAC	MAJ	ADDENDUM NO. 1

REGISTERED PROFESSIONAL ENGINEER
DATE

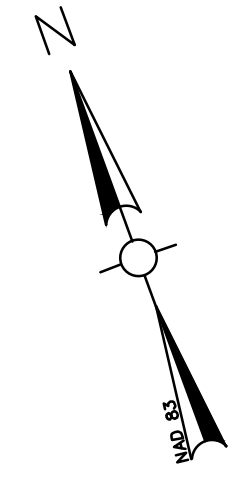
BOROUGH OF NAUGATUCK
RUBBER AVENUE RECONSTRUCTION
UTILITY PLAN
RUBBER AVE STA 3+45 TO STA 12+00
SCALE: AS SHOWN
CONTRACT: L087-0003
CADD NO. DK
DR. BY LEC
CHK. BY KAC
APP. BY LAS

UT-1
SHEET OF

TEST PITS			
POINT NAME	DESCRIPTION	ELEVATION	GROUND ELEVATION
T1	TELECOM	231.74'	232.34'
T2	TELECOM	228.32'	231.32'
T3	TELECOM	223.40'	226.30'
T4	TELECOM	220.65'	223.15'
T5	TELECOM	218.87'	222.07'
T6	TELECOM	218.50'	221.10'
W3	12" WATER	218.68'	222.68'
W4	12" WATER	219.07'	222.17'



PLAN
SCALE: 1"=40'



Weston & Sampson
712 Brook Street, Suite 103, Rocky Hill, CT 06067
860.513.1473
www.westonandsampson.com

No.	Date	Dr. By	Chk. By	App. By	Description
1	6/22/23	LEC	KAC	MAJ	ADDENDUM NO. 1

REGISTERED PROFESSIONAL ENGINEER

BOROUGH OF NAUGATUCK
RUBBER AVENUE RECONSTRUCTION

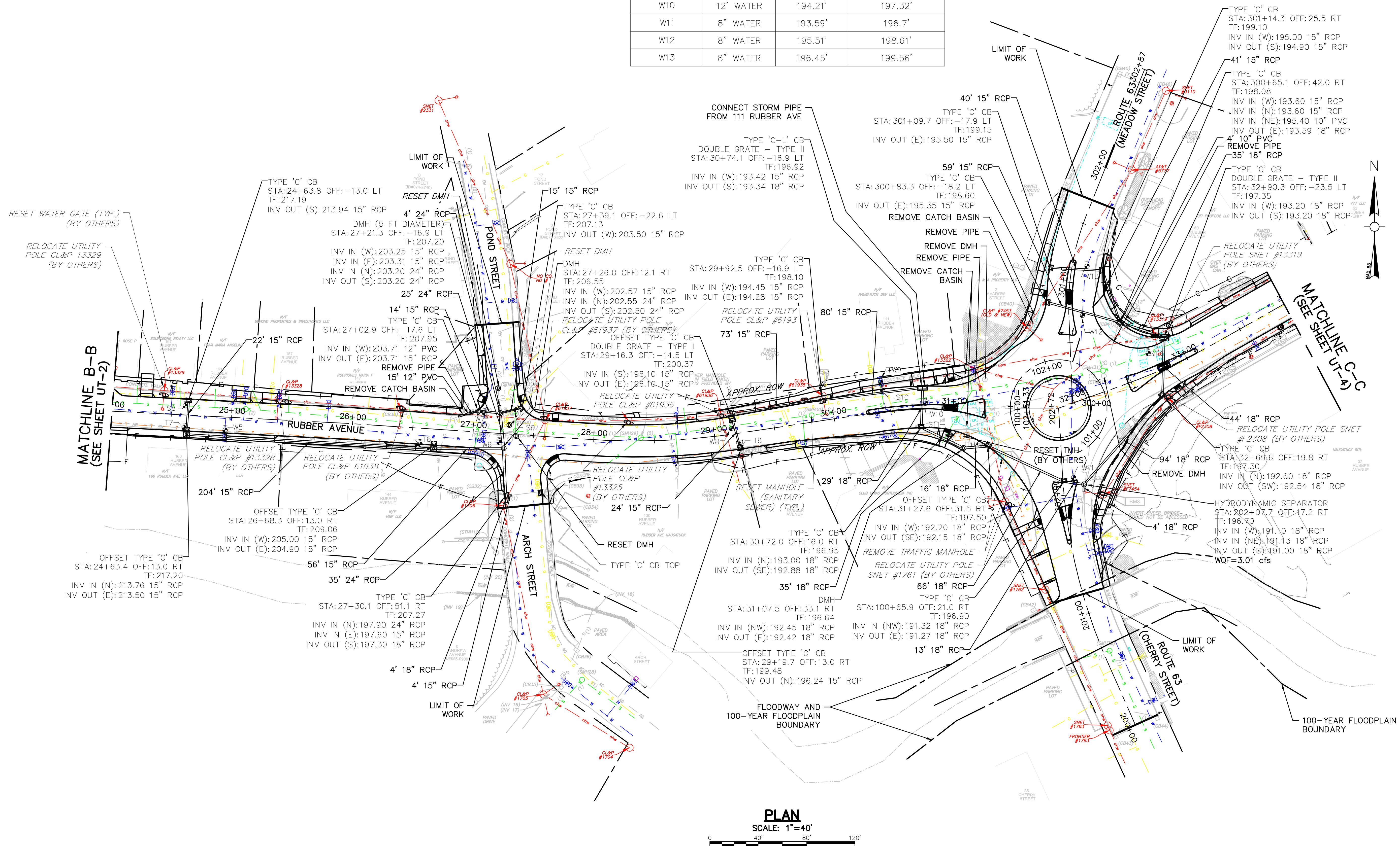
UTILITY PLAN
RUBBER AVE STA 12+00 TO STA 24+00

SCALE: AS SHOWN
CONTRACT: L087-0003
JOB NO. L087-0003
DR. BY: DK
DSN. BY: LEC
CHK. BY: KAC
APP. BY: LAS

UT-2
SHEET OF

TEST PITS			
POINT NAME	DESCRIPTION	ELEVATION	GROUND ELEVATION
W5	12" WATER	213.17'	216.27'
W6	8" WATER	202.96'	206.96'
W7	12" WATER	204.8'	207.9'
W8	12" WATER	196.2'	200'
W9	12" WATER	193.78'	197.78'
W10	12" WATER	194.21'	197.32'
W11	8" WATER	193.59'	196.7'
W12	8" WATER	195.51'	198.61'
W13	8" WATER	196.45'	199.56'

TEST PITS			
POINT NAME	DESCRIPTION	ELEVATION	GROUND ELEVATION
T7	TELECOM	214.19'	216.89'
T8	TELECOM	208.51'	209.81'
T9	TELECOM	196.69'	199.59'
T10	TELECOM	191.05'	196.55'



PLAN
SCALE: 1"=40'

No.	Date	Dr. By	Chk. By	App. By	Description
1	6/22/23	LEC	KAC	MAJ	ADDENDUM NO. 1

REGISTERED PROFESSIONAL ENGINEER

BOROUGH OF NAUGATUCK
RUBBER AVENUE RECONSTRUCTION
UTILITY PLAN
RUBBER AVE STA 24+00 TO STA 34+00

SCALE: AS SHOWN
CONTRACT: L087-0003
JOB NO. L087-0003
DR. BY: DK
CHK. BY: KAC
APP. BY: LAS

FILE NO. UT-3
SHEET OF

