

Attachment A2.4

Plans

SUMMARY OF QUANTITIES

ITEM DESCRIPTION	UNIT	QUANTITY
BRIDGE PLAQUE	EA.	1 **
EARTH EXCAVATION	C.Y.	100
ROCK EXCAVATION	C.Y.	15
CHANNEL EXCAVATION-EARTH	C.Y.	800
REMOVAL OF GRANITE STONE CURBING	L.F.	485
CUT BITUMINOUS CONCRETE PAVEMENT	L.F.	225
COFFERDAM AND DEWATERING	LF	1250
ROCK IN TRENCH EXCAVATION 0'-10' DEEP	C.Y.	150
PROCESSED AGGREGATE BASE	C.Y.	38 30
BRICK PAVING	S.F.	7690 **
HMA S0.5	TON	130
HMA S0.375	TON	80
MATERIAL FOR TACK COAT	GAL.	145
MILLING OF HOT MIX ASPHALT (HMA) - 0-4 INCHES	S.Y.	925
TYPE "C" CATCH BASIN TOP	EA.	4
TYPE "C" CATCH BASIN - FRAME AND GRATE	EA.	4
RESET TYPE "C" CATCH BASIN	EA.	4
POLYVINYL CHLORIDE PLASTIC PIPE WEEPHOLES	EA.	5
CONSTRUCT WEEP DRAINS	EA.	9
PRECAST CONCRETE ARCHITECTURAL PANELS (SITE NO. 1)	L.S.	1
VARIABLE DEPTH PATCH	C.F.	5000
CLASS "F" CONCRETE	C.Y.	450
LIGHTWEIGHT CONCRETE	C.Y.	400 **
ASPHALTIC PLUG EXPANSION JOINT SYSTEM	L.F.	80
DEFORMED STEEL BARS	LB.	13000
DEFORMED STEEL BARS-EPOXY COATED	LB.	35000
DOWEL BAR SPLICER SYSTEM	EA.	4700
DRILLING HOLES AND GROUTING DOWELS	EA	550
SPECIAL PAINTING TREATMENT	S.F.	3200 **
TEMPORARY SLAB SUPPORT	L.F.	400
DIMENSION STONE MASONRY	S.Y.	3
REPOINT MORTAR JOINTS	L.F.	700
ROUNDED STONE RIPRAP	C.Y.	800
MEMBRANE WATERPROOFING (WOVEN GLASS FABRIC)	S.Y.	850
GEOTEXTILE	S.Y.	400
CONCRETE CURBING	L.F.	20
5" GRANITE STONE CURBING	L.F.	100
5" GRANITE CURVED STONE CURBING	L.F.	52
RESET GRANITE STONE CURBING	L.F.	15
TEMPORARY PRECAST CONCRETE BARRIER CURB	L.F.	150
TEMPORARY PRECAST CONCRETE BARRIER CURB (STRUCTURE)	L.F.	180
RELOCATED TEMPORARY PRECAST CONCRETE BARRIER CURB (STRUCTURE)	L.F.	180
REMOVAL OF EXISTING METAL BRIDGE RAIL	L.F.	360
CONCRETE SIDEWALK	S.F.	1800
RETRO-FIT DETECTABLE WARNING STRIP	EA	7
CONSTRUCTION FIELD OFFICE, SMALL	MO.	20
TRAFFICPERSON (MUNICIPAL POLICE OFFICER)	EST.	1 *
MAINTENANCE AND PROTECTION OF TRAFFIC	L.S.	1
REMOVAL OF EXISTING MASONRY	C.Y.	750
MOBILIZATION	L.S.	1
TRAFFIC DRUM	EA.	30
CONSTRUCTION BARRICADE TYPE III	EA.	15
DISPOSAL OF BUILDINGS	L.S.	1 **
TRENCHING AND BACKFILLING (TYPE I)	L.F.	670
TRENCHING AND BACKFILLING (TYPE II)	L.F.	125
TRENCHING AND BACKFILLING (TYPE III)	L.F.	130
REMOVE LIGHT STANDARD	EA.	2
4" POLYVINYL CHLORIDE CONDUIT IN STRUCTURE	L.F.	380
4" POLYVINYL CHLORIDE CONDUIT UNDER ROADWAY	L.F.	950
5" POLYVINYL CHLORIDE CONDUIT UNDER ROADWAY	L.F.	1110
2" RIGID METAL CONDUIT UNDER ROADWAY	L.F.	155
2" RIGID METAL CONDUIT IN STRUCTURE	L.F.	340
5" FIBERGLASS CONDUIT - HEAVY WALL	L.F.	1520
8" X 8" X 8" CAST IRON JUNCTION BOX	EA.	4
INSTALL PRECAST CONCRETE MANHOLE	EA.	2
TEMPORARY SIGNALIZATION (SITE 1)	L.S.	1

SUMMARY OF QUANTITIES

ITEM DESCRIPTION	UNIT	QUANTITY
REMOVAL OF EXISTING SIGNING	L.S.	1
SIGN FACE - SHEET ALUMINUM (TYPE III REFLECTIVE SHEETING)	S.F.	40
ORNAMENTAL SIGN POST	EA.	4
PAINTED PAVEMENT MARKINGS (4") (WHITE)	L.F.	725
PAINTED PAVEMENT MARKINGS (4") (YELLOW)	L.F.	1120
PAINTED PAVEMENT MARKINGS (12") (WHITE)	L.F.	260
PAINTED LEGEND, ARROWS AND MARKINGS	S.F.	1400
REMOVAL OF PAINTED PAVEMENT MARKINGS	S.F.	180
TEMPORARY PLASTIC PAVEMENT MARKING TAPE (4") (YELLOW)	L.F.	600
TEMPORARY PLASTIC PAVEMENT MARKING TAPE (4") (WHITE)	L.F.	620
TEMPORARY PLASTIC PAVEMENT MARKING TAPE (12") (WHITE)	L.F.	30
TEMPORARY PLASTIC LEGEND ARROWS AND MARKINGS	S.F.	175
CONSTRUCTION SIGNS (TYPE III REFLECTIVE SHEETING)	S.F.	400
TEMPORARY SUPPORT FOR EXISTING TELEPHONE DUCTS	L.S.	1
TEMPORARY IMPACT ATTENUATION SYSTEM TYPE A (TL-2)	EA.	2
RELOCATION OF TEMPORARY IMPACT ATTENUATION SYSTEM TYPE A	EA.	2
BLAST CLEAN EXISTING CONCRETE	SF	5000 **

* A SUM HAS BEEN INSERTED FOR BIDDING PURPOSES, HOWEVER THIS ITEM IS TO BE PAID BY THE ACTUAL COST AS DESCRIBED IN THE SPECIFICATIONS.

** TOWN MAY CONSIDER ELIMINATING THESE ITEMS FROM THE CONTRACT OR USING OTHER BIDS ITEMS FOR THIS WORK AT THEIR DISCRETION. NO COMPENSATION WILL BE MADE TO THE CONTRACTOR FOR ELIMINATING THESE ITEMS.

NOTE: THIS IS A REHABILITATION PROJECT AND QUANTITIES MAY VARY SIGNIFICANTLY FROM THOSE SHOWN ON THE PLANS. THE CONTRACTOR WILL BE PAID FOR THE ACTUAL QUANTITY OF ITEMS INSTALLED. NO ADJUSTMENT IN UNIT PRICES WILL BE MADE FOR QUANTITIES LESS THAN OR EXCEEDING THOSE SHOWN.

GENERAL NOTES:


- DESIGN SPECIFICATIONS: ALL ROAD, DRAINAGE AND STRUCTURAL WORK (AND APPURTENANT WORK) SHALL BE PERFORMED IN ACCORDANCE WITH THE TECHNICAL REQUIREMENTS, INCLUDING MATERIALS AND METHODS, OF THE STATE OF CONNECTICUT DEPARTMENT OF TRANSPORTATION STANDARD SPECIFICATIONS FOR ROADS, BRIDGES AND INCIDENTAL CONSTRUCTION, FORM 816, 2004 (INCLUDING ADDENDUMS AND SUPPLEMENTALS) UNLESS OTHERWISE SPECIFIED IN THE CONTRACT DOCUMENTS.
- CTDOT STANDARD SHEETS: THE CONTRACTOR IS RESPONSIBLE FOR OBTAINING THE CONNECTICUT DEPARTMENT OF TRANSPORTATION (CTDOT) STANDARD SHEETS LISTED ON THE TITLE SHEET. THESE SHEETS CAN BE OBTAINED DIRECTLY FROM THE DEPARTMENT AND/OR DOWNLOADED FROM THE DEPARTMENT'S WEBSITE AT WWW.CT.GOV/DOT.
- DATUM: HORIZONTAL CONTROL - NAD 83
VERTICAL CONTROL - NAVD 88
- DESIGN SPEED: 25 MPH.
- MUTCD: ALL PERMANENT AND TEMPORARY TRAFFIC CONTROL DEVICES INCLUDING TRAFFIC SIGNS, CONSTRUCTION SIGNS, PAVEMENT MARKINGS, AND CHANNELIZATION DEVICES SHALL MEET THE REQUIREMENTS OF, AND BE INSTALLED/PLACED IN ACCORDANCE WITH, THE DIMENSIONS AND LOCATIONS SPECIFIED IN THE 2009 EDITION OF THE MANUAL ON UNIFORM TRAFFIC CONTROL DEVICES (MUTCD), AS INDICATED ON THE PLANS, OR AS DIRECTED BY THE ENGINEER.
- REMOVED MATERIALS: THE BOROUGH OF NAUGATUCK WILL BE PROVIDED THE OPTION OF RETAINING THE POSSESSION OF ALL MATERIALS REMOVED OR EXCAVATED IN THE COURSE OF EXECUTING THIS PROJECT. ANY MATERIALS RETAINED BY THE BOROUGH SHALL BE DELIVERED TO A SITE WITHIN BOROUGH LIMITS AS DESIGNATED BY THE BOROUGH AT NO ADDITIONAL COST TO THE BOROUGH OF NAUGATUCK. ALL MATERIALS NOT RETAINED BY THE BOROUGH SHALL BE PROPERLY DISPOSED OF AT NO ADDITIONAL COST TO THE BOROUGH OF NAUGATUCK.
- EXCAVATED MATERIALS: ANY EXCAVATED MATERIALS DEEMED BY THE ENGINEER AS BEING SUITABLE FOR RE-USE SHALL BE STOCKPILED ON THE JOB SITE AS DIRECTED BY THE ENGINEER FOR FUTURE USE AS BACKFILL. NO ADDITIONAL PAYMENT WILL BE MADE FOR STOCKPILING MATERIAL, FOR RE-USE AS BACKFILL, OR FOR THE REMOVAL OF SURPLUS STOCKPILED MATERIAL NOT UTILIZED ON THE PROJECT. THE COST OF STOCKPILING IS TO BE INCLUDED IN THE "STRUCTURE EXCAVATION EARTH" ITEM.
- PAY ITEMS: TECHNICAL SPECIFICATIONS SHALL BE IN ACCORDANCE WITH STATE OF CONNECTICUT FORM 816 (SEE NOTE 1). SOME OF THESE TECHNICAL ITEMS HAVE BEEN COMBINED FOR PAYMENT PURPOSES, AND THEREFORE, PAYMENT WILL ONLY BE MADE ACCORDING TO THE PAY ITEMS LISTED IN THE BID DOCUMENT FORMS PROVIDED. ALL MATERIALS, TOOLS, EQUIPMENT AND LABOR REQUIRED TO COMPLETE THE WORK AS DETAILED ON THESE PLANS SHALL BE INCLUDED IN CONTRACT PAY ITEMS. ANY WORK NOT SPECIFICALLY LABELED BUT NECESSARY TO COMPLETE THE WORK SHALL BE CONSIDERED INCIDENTAL.
- 'CALL BEFORE YOU DIG': EXISTING STORM DRAIN, SANITARY SEWER, GAS, ELECTRIC, TELECOMMUNICATIONS AND OTHER UTILITIES ARE SHOWN IN THEIR APPROXIMATE LOCATIONS ON THE PLANS. THE CONTRACTOR SHALL CONTACT 'CALL BEFORE YOU DIG' AT (800) 922-4455 THREE DAYS PRIOR TO BEGINNING ANY SUBSURFACE CONSTRUCTION ACTIVITIES TO DETERMINE THE LOCATIONS OF THESE AND ANY OTHER BURIED UTILITIES NOT SHOWN ON THE PLANS.
- DRAINAGE STRUCTURES: STATIONINGS AND TOP OF FRAME (TF) ELEVATIONS ARE MEASURED FROM THE LONGITUDINAL CENTER OF EACH STRUCTURE AT THE FACE OF CURB OR EDGE OF PAVEMENT, WHICHEVER APPLIES.
- UTILITIES: UTILITY DESIGN HAS BEEN COORDINATED WITH THE RESPECTIVE UTILITY COMPANIES FOR TELEPHONE, GAS, ELECTRIC, AND CABLE. THE CONTRACTOR SHALL UTILIZE THE FOLLOWING CONTACTS WHEN DIRECTED TO CONTACT UTILITIES:



AT&T (TELEPHONE)	CL&P (ELECTRIC)
TOM DELORENZO (203) 238-5202	BRIAN MORGAN (203) 597-4233
OR	
GLEN MCLOUD (203) 575-6703	COMCAST (CABLE)
	DAVE GERRISH (203) 732-0146 EXT 73801
YANKEE GAS (GAS)	
ROB PANTALONE (203) 596-3020	
- EXCAVATION: FINAL EXCAVATION LIMITS SHALL BE DETERMINED IN THE FIELD, TO THE APPROVAL OF THE ENGINEER. WHERE PAYMENT IS NOT OTHERWISE SPECIFIED, PAYMENT SHALL BE UNDER THE "EARTH EXCAVATION", "ROCK EXCAVATION" OR "REMOVE EXISTING MASONRY" ITEMS, AS APPROVED BY THE ENGINEER.

2:22:47 PM
 C:\Users\jrey\My Documents\Projects\16319\16319_Gen_Notes_sht.dgn
 6/22/2012

THE INFORMATION, INCLUDING ESTIMATED QUANTITIES OF WORK, SHOWN ON THESE SHEETS IS BASED ON LIMITED INVESTIGATIONS BY THE STATE AND IS IN NO WAY WARRANTED TO INDICATE THE CONDITIONS OF ACTUAL QUANTITIES OF WORK WHICH WILL BE REQUIRED.

DESIGNER/DRAFTER: **CRH**
 CHECKED BY: **RJF**
 SCALE AS NOTED


BOROUGH OF NAUGATUCK
 DEPARTMENT OF PUBLIC WORKS



 CLOUGH HARBOUR & ASSOCIATES LLP
 2150 Blue Course Highway, Suite 212, Rocky Hill, CT 06067-2508
 Main: (860) 597-4607 - www.chiafirm.com

PROJECT TITLE:
MAPLE STREET OVER NAUGATUCK RIVER

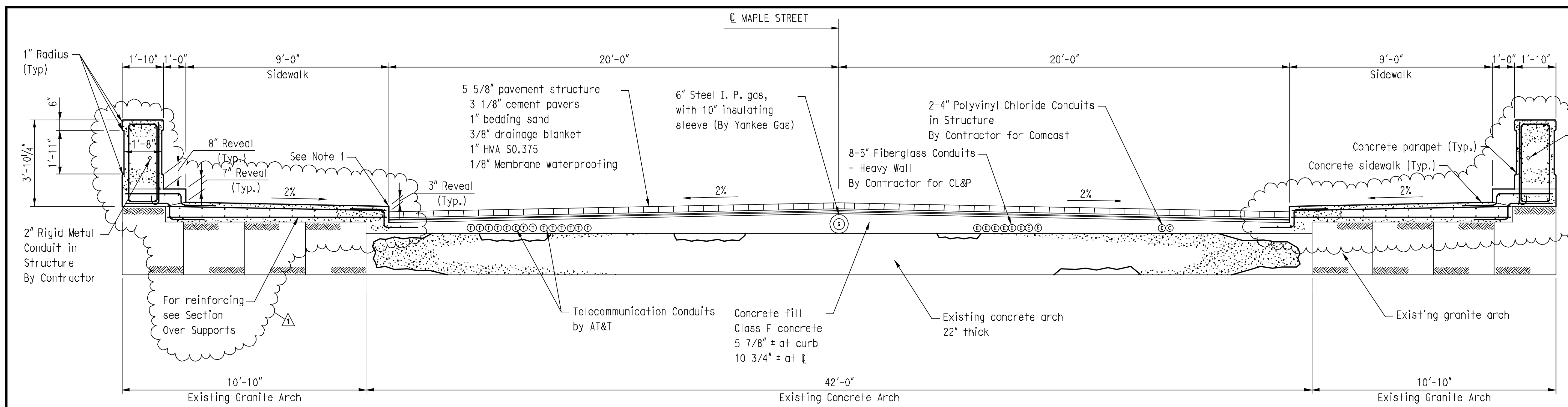
TOWN: **NAUGATUCK**
 DRAWING TITLE: **GENERAL NOTES AND QUANTITIES**

PROJECT NO. **9087-4214**
 SHEET NO. **2** of **25**

REV.	DATE	REVISION DESCRIPTION	SHEET NO.
1	6/22/12	REVISED QUANTITIES	

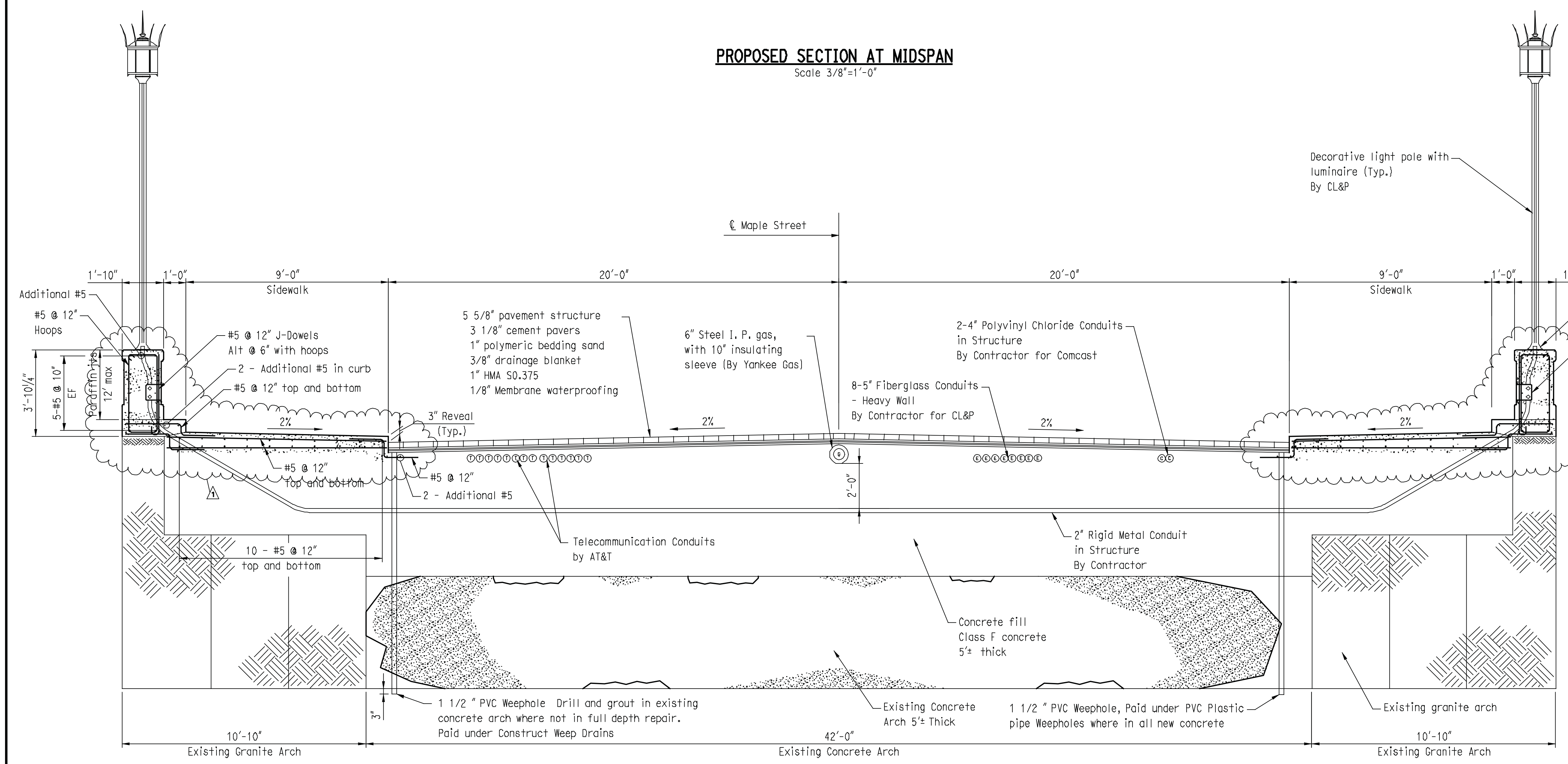
SHEET NO. _____
 Plot Date: 6/22/2012

Filename: i:\16319\maple_street\cad\highway\16319_Gen_Notes_sht.dgn



PROPOSED SECTION AT MIDSPAN
Scale 3/8"=1'-0"

- NOTES:**
1. DETAIL AT CURB AND PARAPET MAY BE ADJUSTED DURING CONSTRUCTION. CONTRACTOR SHALL REMOVE EXISTING CONCRETE AND PAVEMENT TO EXPOSED GRANITE ARCH. ENGINEER WILL INSPECT ACTUAL SITE CONDITIONS AND MODIFY PROPOSED DETAILS IF NECESSARY.
 2. SEE STAGE 1 AND STAGE 2 CROSS SECTIONS, SHEETS 21-22 FOR CONDUIT IN STRUCTURE CONSTRUCTION DETAILS. SEE UTILITY PLAN, SHEET 6, AND UTILITY DETAILS, SHEET 7, FOR ADDITIONAL UTILITY RELOCATION DETAILS.
 3. THE CEMENT PAVERS ON THE BRIDGE INCLUDING THE PAVERS, BEDDING SAND, AND DRAINAGE BLANKET SHALL BE PAID UNDER THE "BRICK PAVING" ITEM.
 4. ALL CONCRETE FOR PATCHING THE STRUCTURAL CONCRETE ARCH SHALL BE PAID UNDER THE "VARIABLE DEPTH PATCH" ITEM. ALL OTHER CONCRETE INCLUDING FILL, BRIDGE SIDEWALK, AND PARAPETS SHALL BE PAID UNDER THE "CLASS F CONCRETE" ITEM.
 5. TWO FEET OF VERTICAL SEPARATION SHALL BE PROVIDED BETWEEN THE 6" I. P. GAS MAIN (YANKEE GAS) AND THE 2" RIGID METAL CONDUIT.
 6. ADDITIONAL COVER MAY BE OBTAINED FOR CONDUITS AT SUPPORTS, MAINTAIN MINIMUM OF 2' OF VERTICAL COVER OVER 2" RIGID METAL CONDUIT.
 7. CONCRETE PARAPETS SHALL BE RUBBED TO A SMOOTH FINISH WITHIN 4 DAYS OF PLACING THE CONCRETE.



PROPOSED SECTION OVER SUPPORTS
Scale 3/8"=1'-0"

2:22:53 PM
 I:\Projects\16319 Maple Street\Road\Bridges\Deck Section.dgn
 6/22/2012

1	6/22/12	UPDATED REINFORCING	SHEET NO.
REV.	DATE	REVISION DESCRIPTION	

Plotted Date: 6/22/2012

DESIGNER/DRAWER: **CRH**
 CHECKED BY: **RJF**
 SCALE AS NOTED

BOROUGH OF NAUGATUCK
 DEPARTMENT OF PUBLIC WORKS

FILENAME: I:\16319 maple street\road\Bridges\Deck Section.dgn

SIGNATURE BLOCK

CIA
 CLOUGH HARBOUR & ASSOCIATES LLP
 2130 Glen Quarry Highway, Suite 212, Rocky Hill, CT 06067-2230
 Phone: (860) 371-4527 • www.cia-naugatuck.com

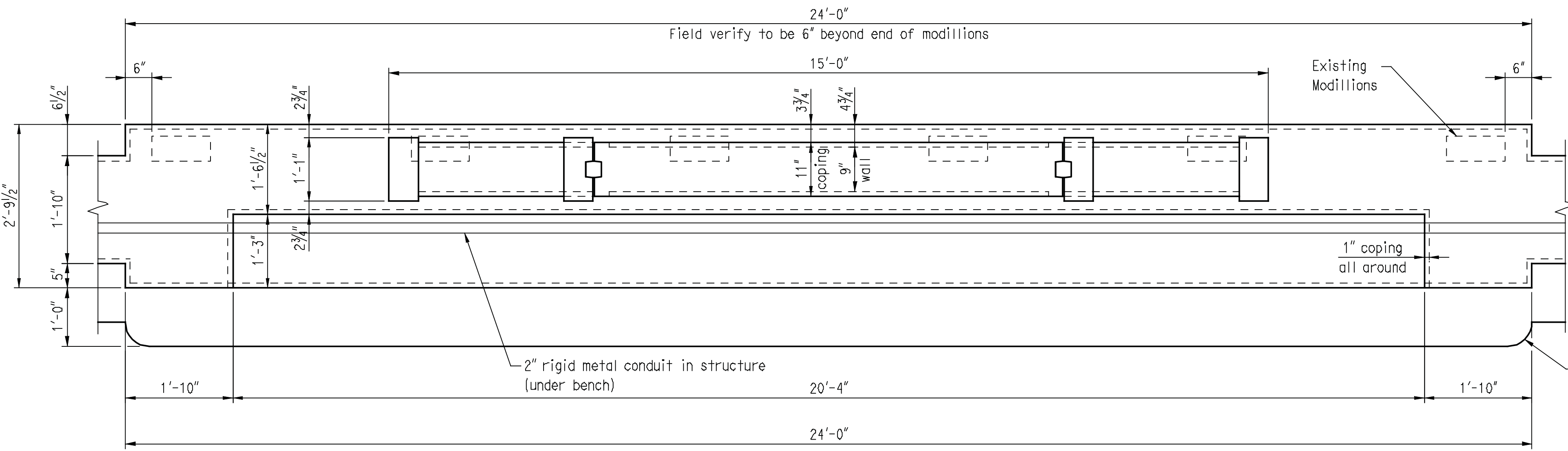
PROJECT TITLE:
MAPLE STREET OVER NAUGATUCK RIVER

TOWN: **NAUGATUCK**

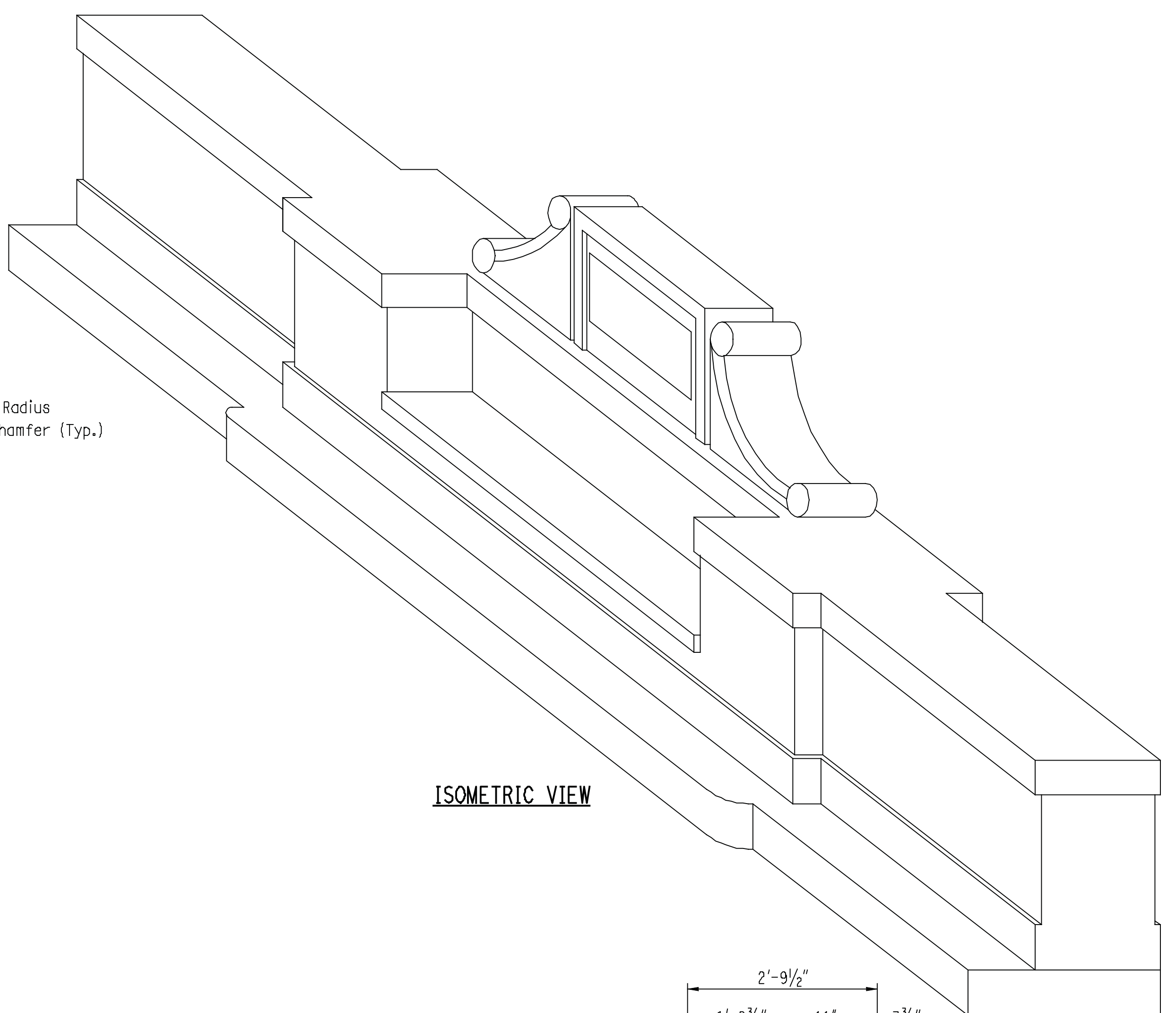
PROJECT NO.: **9087-4214**

DRAWING TITLE:
DECK SECTION AND DETAILS

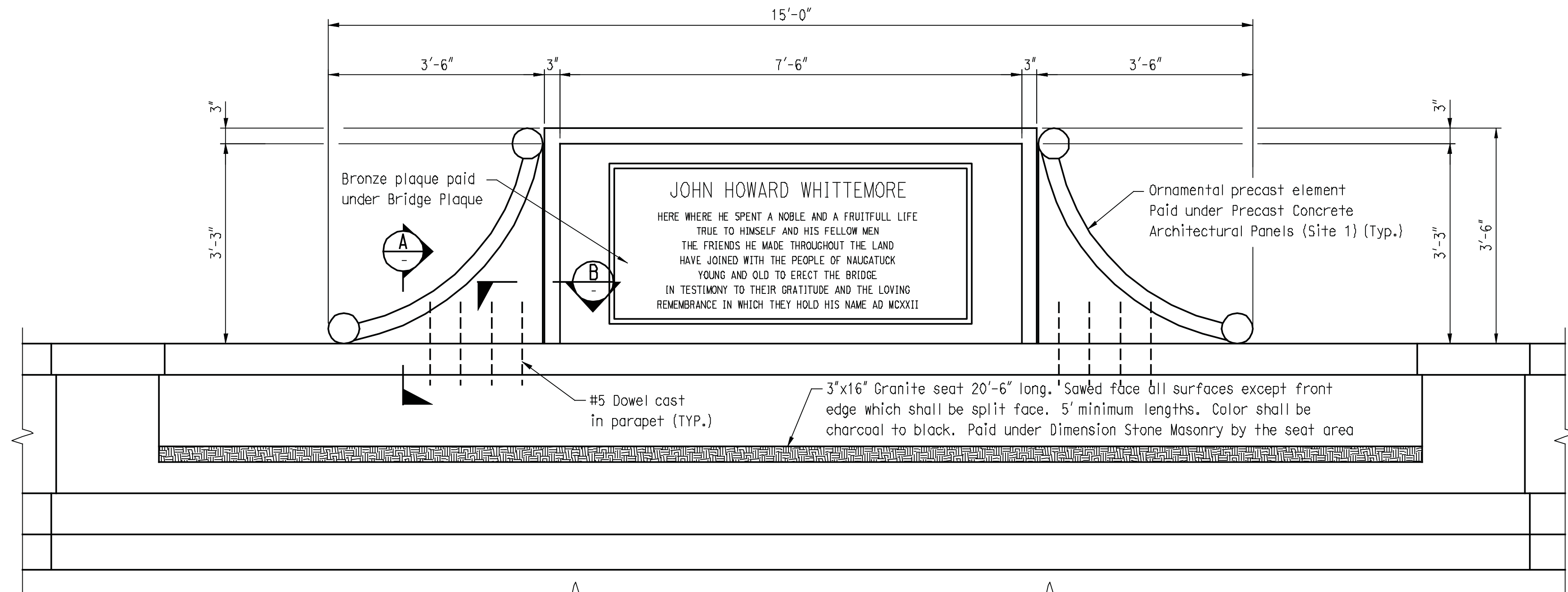
SHEET NO.: **11** of **25**



PLAN



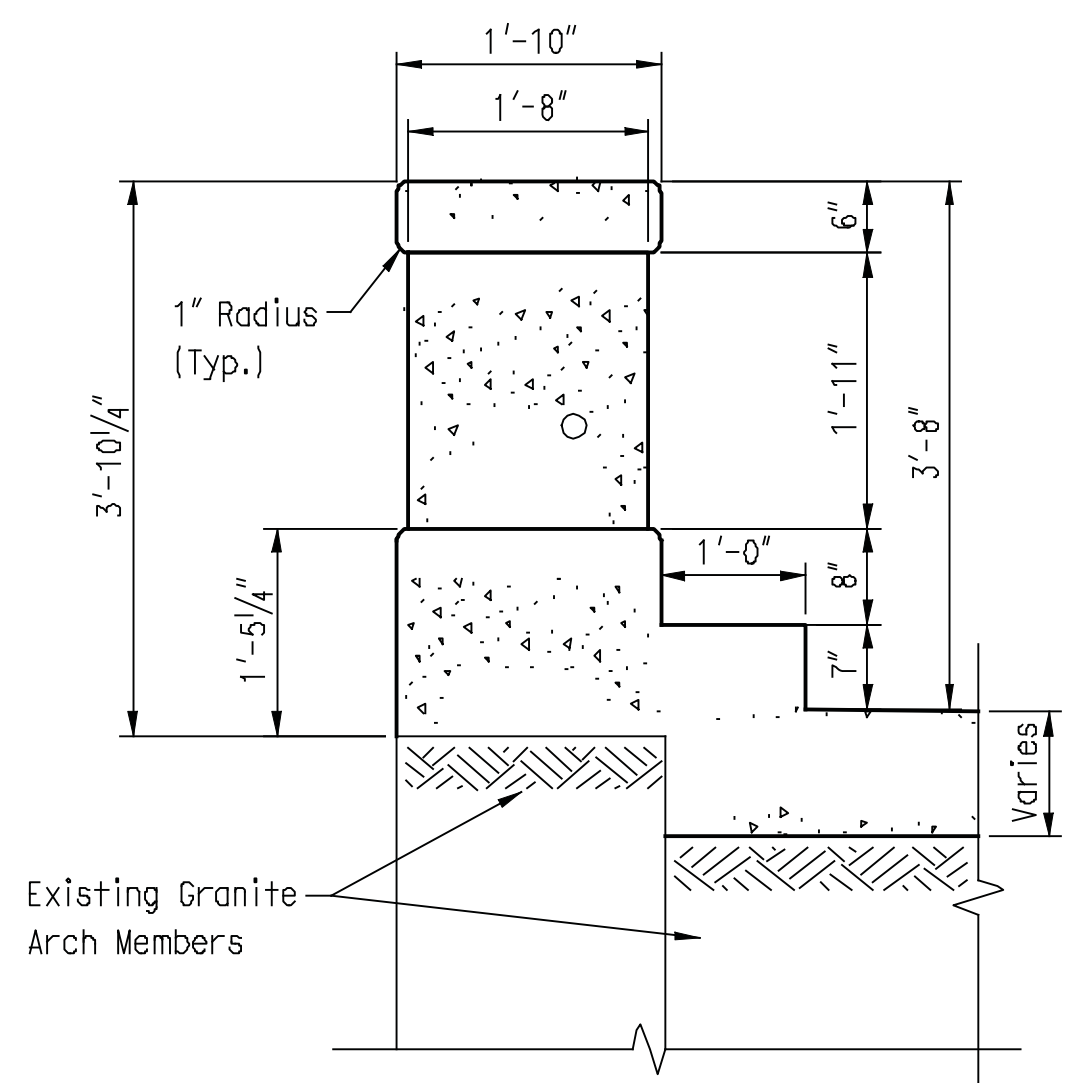
ISOMETRIC VIEW



ELEVATION

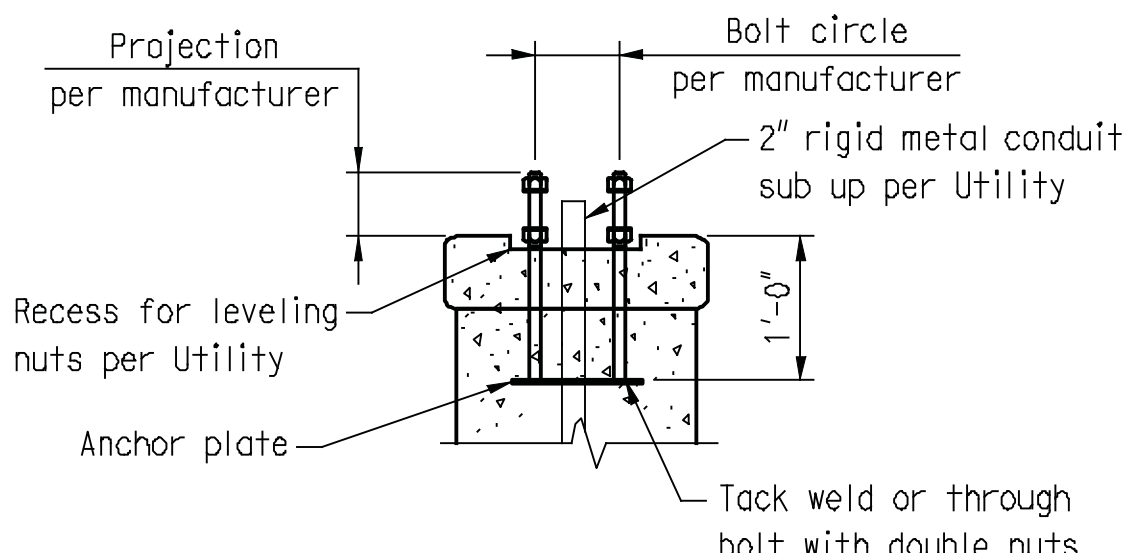
MIDSPAN BENCH DETAIL

Scale 3/4"=1'-0"



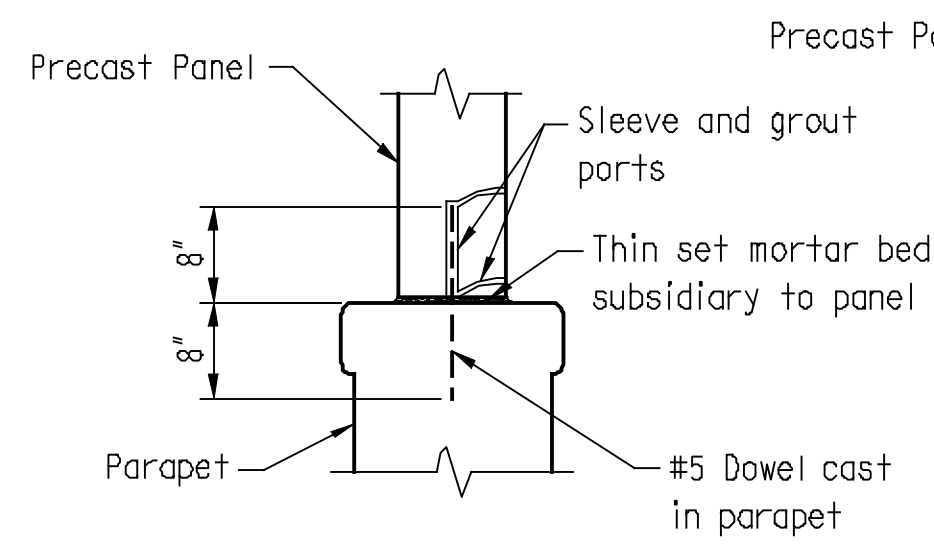
PARAPET DETAIL

Scale 3/4"=1'-0"



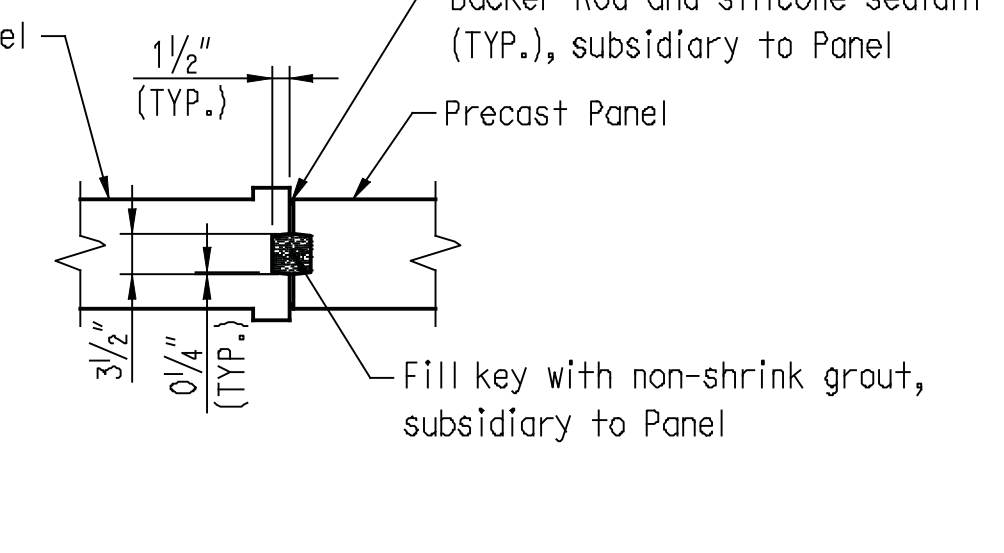
LIGHT POST ANCHORAGE

Scale 3/4"=1'-0"



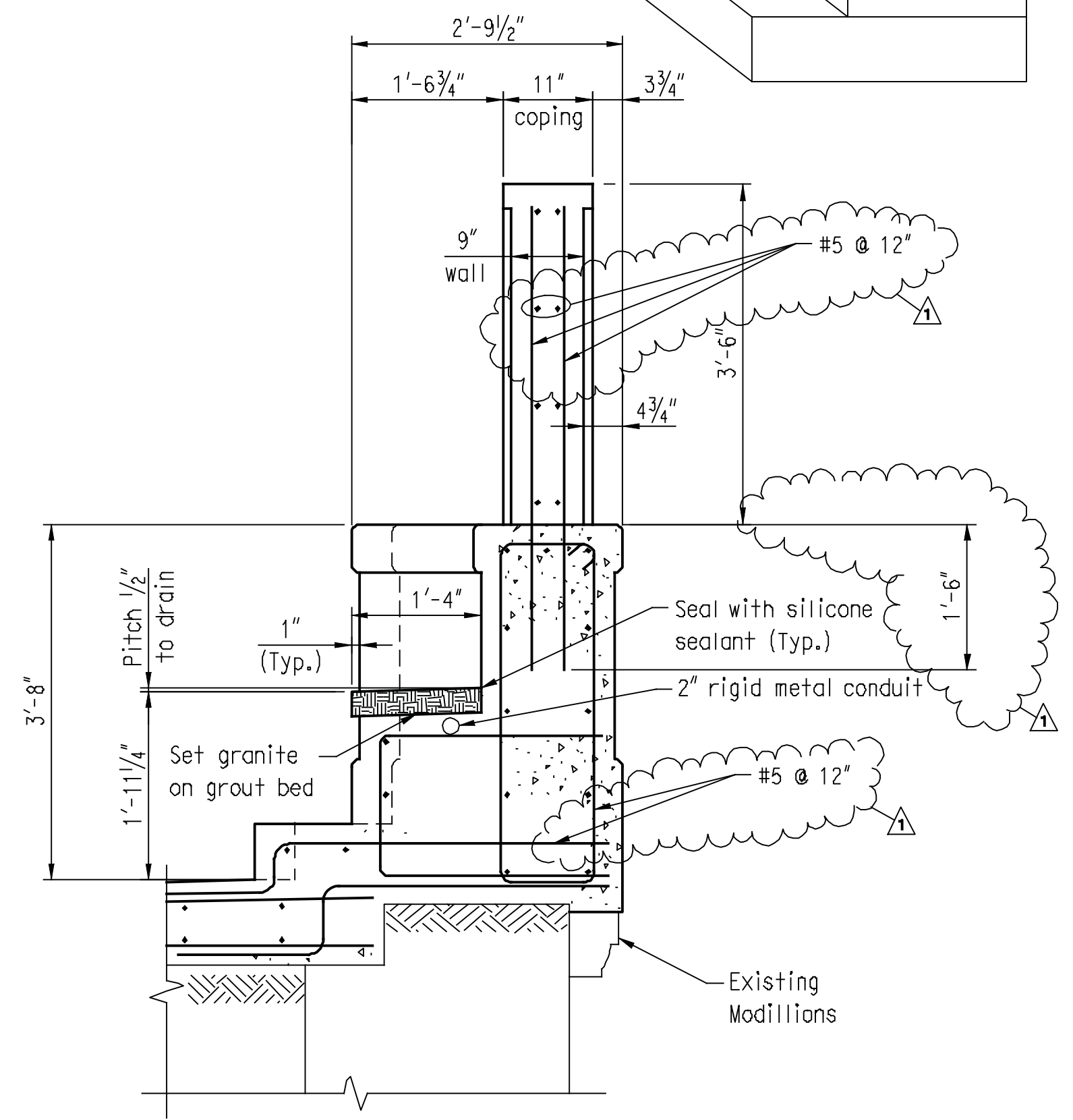
SECTION A

SCALE: 3/4"=1'-0"



SECTION B

SCALE: 3/4"=1'-0"



SECTION - MIDSPAN BENCH DETAIL

2:22:59 PM V:\CADD\Workspaces\standards\yabites\pen\001_pentable_b\ack.tbl
3:11:58 PM V:\CADD\Workspaces\standards\yabites\pen\001_pentable_b\ack.tbl
6/22/2012 6:22:59 PM V:\CADD\Workspaces\standards\yabites\pen\001_pentable_b\ack.tbl

THE INFORMATION, INCLUDING ESTIMATED QUANTITIES OF WORK, SHOWN ON THESE SHEETS IS BASED ON LIMITED INVESTIGATIONS BY THE STATE AND IS IN NO WAY WARRANTED TO INDICATE THE CONDITIONS OF ACTUAL QUANTITIES OF WORK WHICH WILL BE REQUIRED.

DESIGNER/DRAFTER: CRH
CHECKED BY: RJF
SCALE AS NOTED

BOROUGH OF NAUGATUCK
DEPARTMENT OF PUBLIC WORKS

CLIA
CLOUGH HARBOUR & ASSOCIATES LLP
2150 Blue Cove Highway, Suite 212, Rocky Hill, CT 06067-2008
Main: (860) 437-4837 • www.cliafirm.com

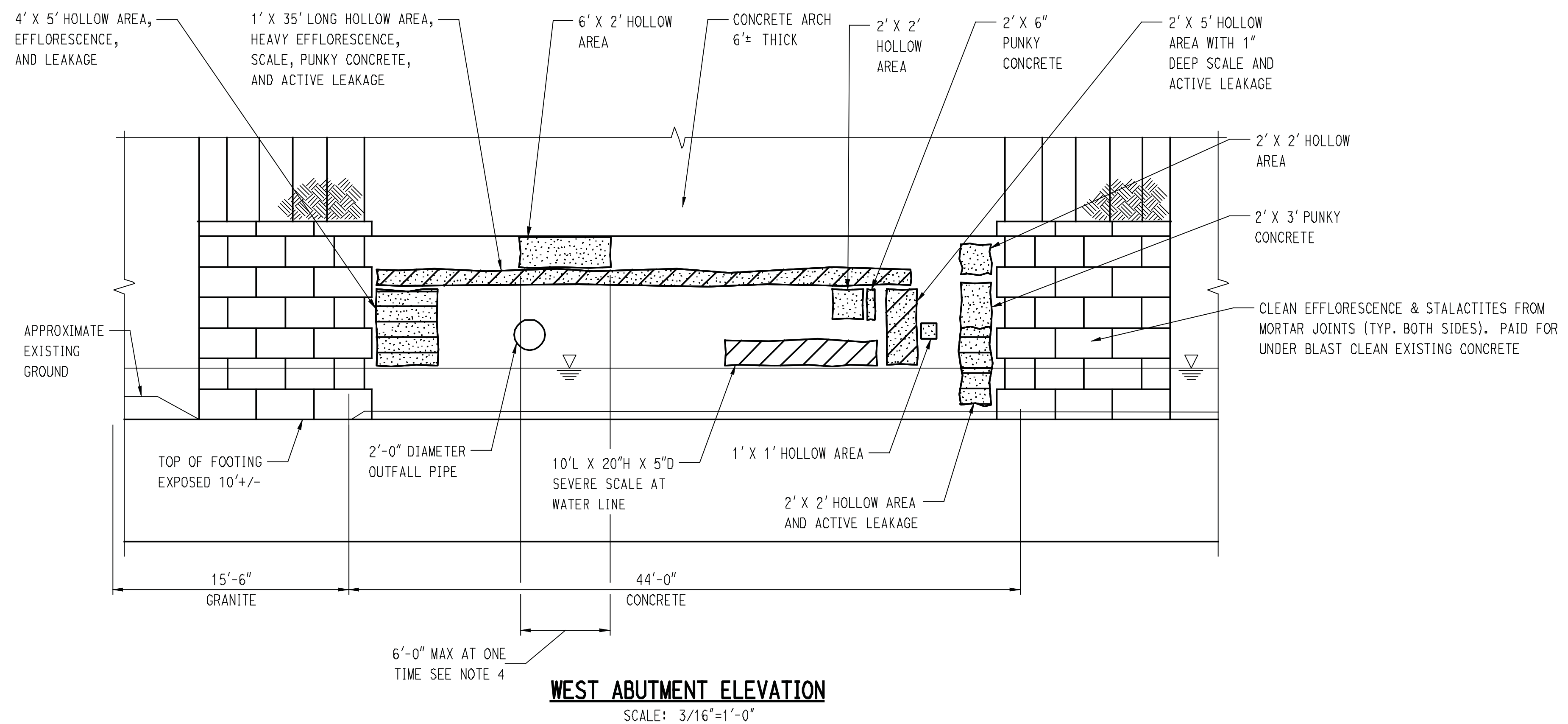
PROJECT TITLE: MAPLE STREET OVER NAUGATUCK RIVER

TOWN: NAUGATUCK
PROJECT NO.: 9087-4214
DRAWING NO.:
DRAWING TITLE: DECK DETAILS 1 OF 2
SHEET NO.: 12 of 25

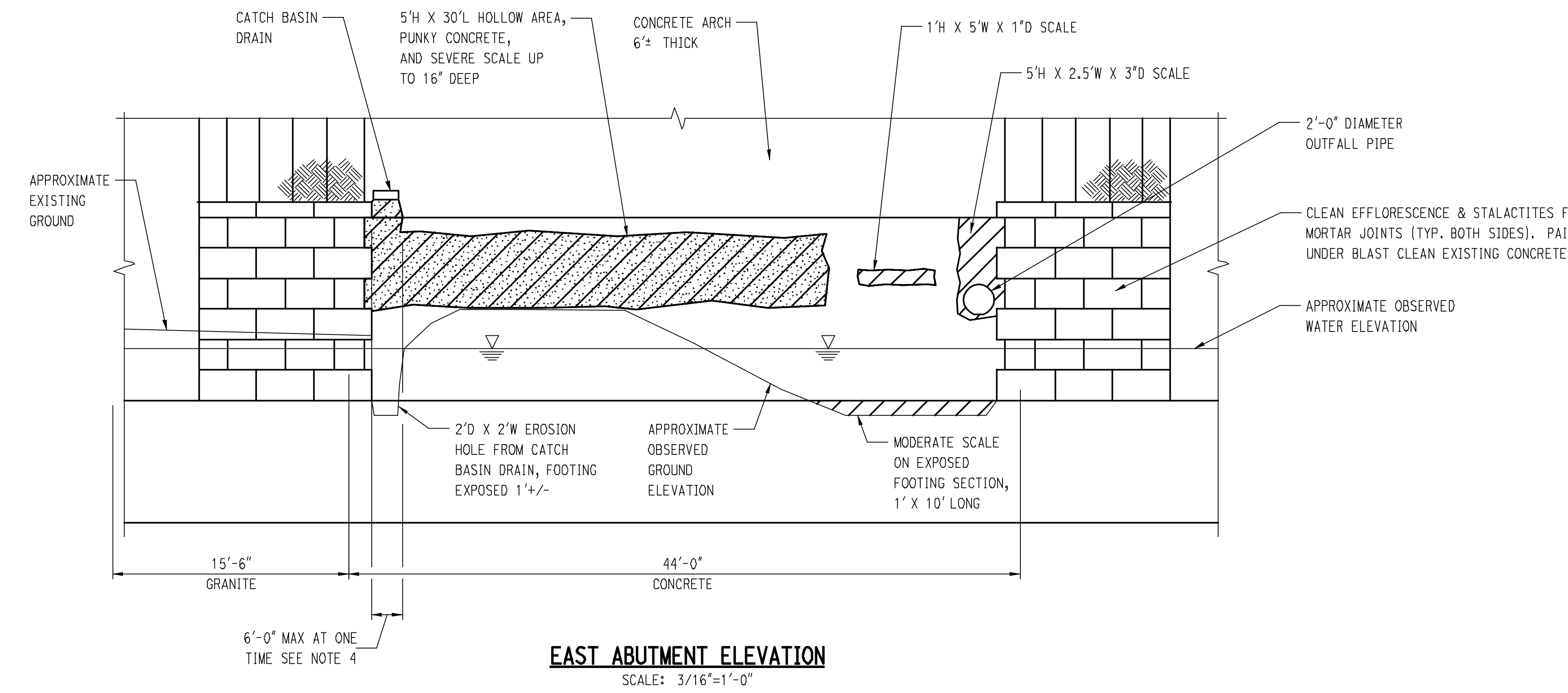
REV.	DATE	REVISION DESCRIPTION	SHEET NO.
1	6/22/12	REVISED REINFORCING	

Plotted Date: 6/22/2012

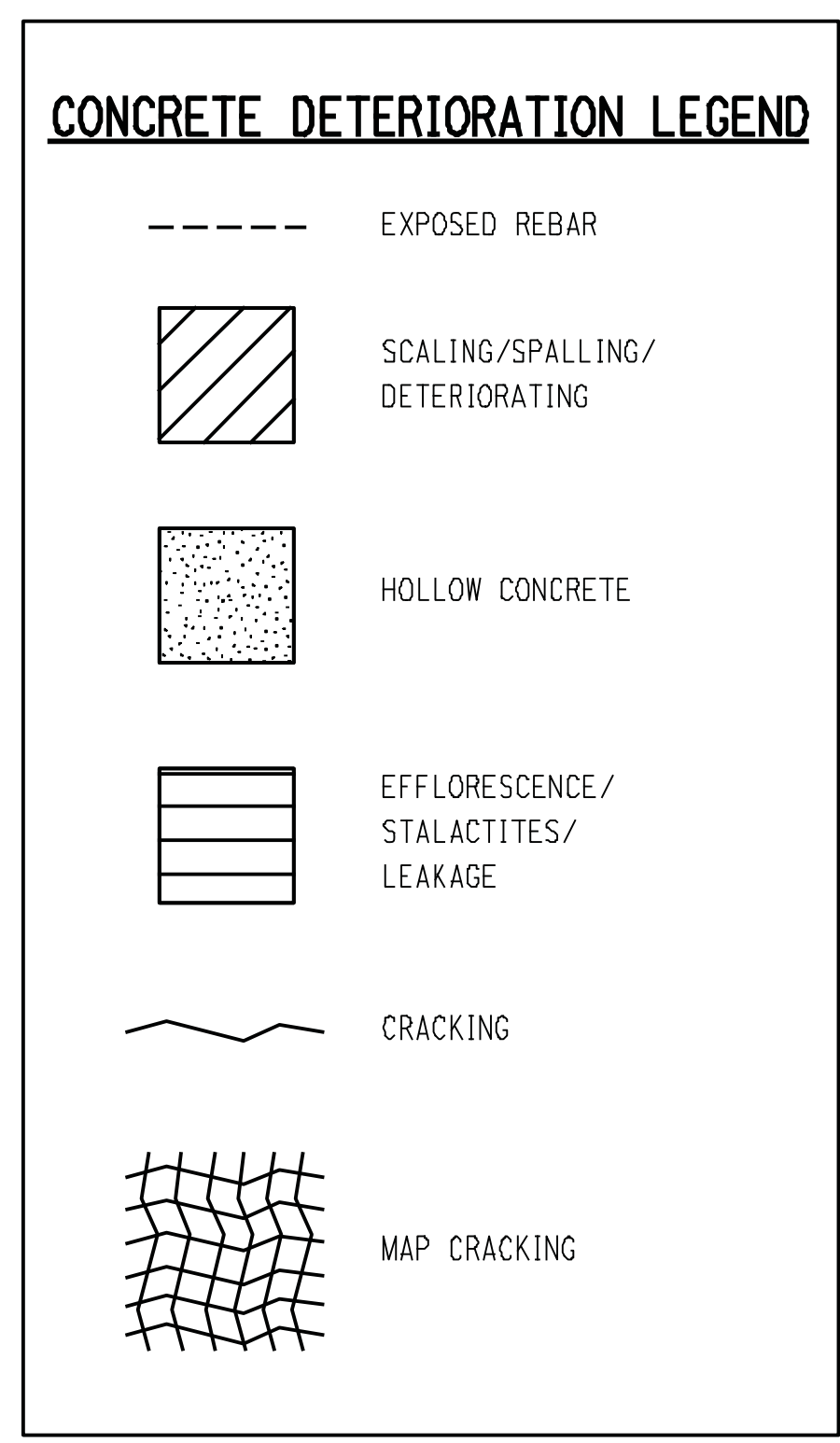
Filename: i:\16319 maple street\cad\bridge\Deck Details.dgn



WEST ABUTMENT ELEVATION
SCALE: 3/16"=1'-0"

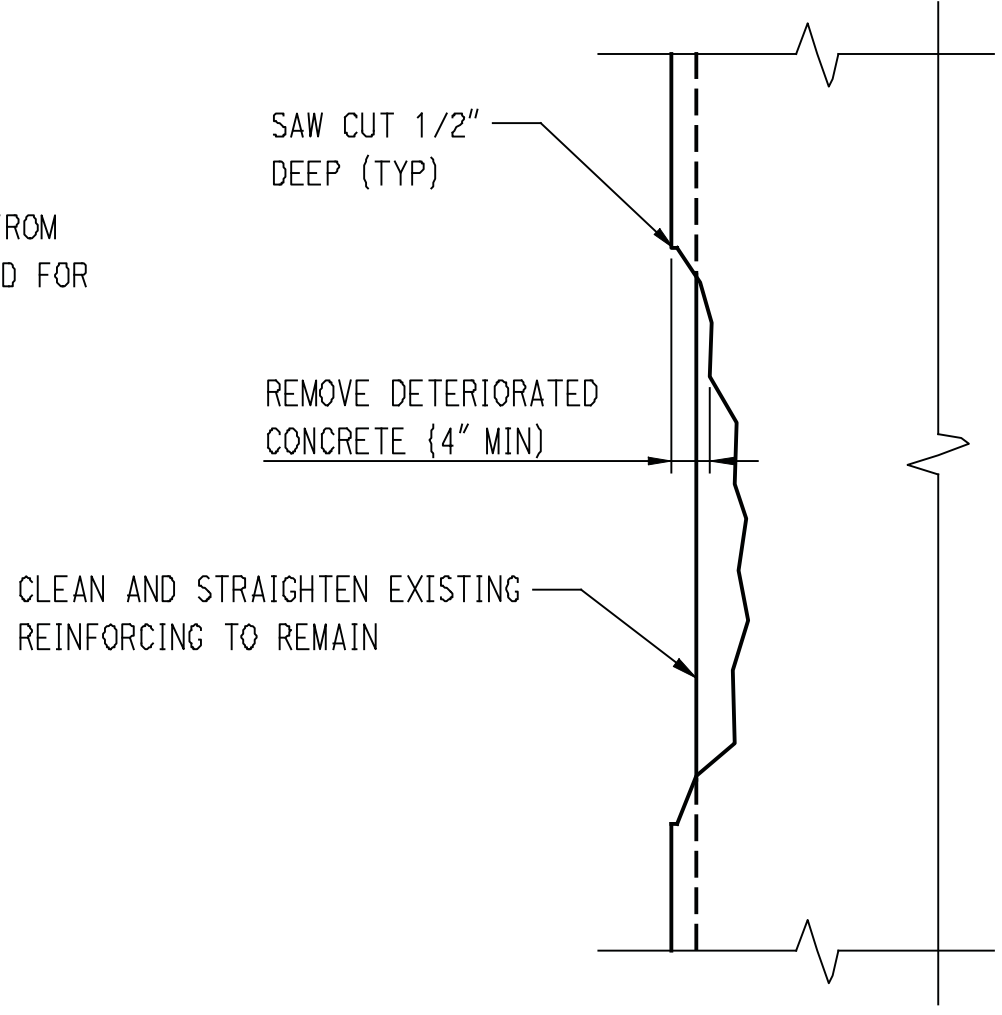


EAST ABUTMENT ELEVATION
SCALE: 3/16"=1'-0"

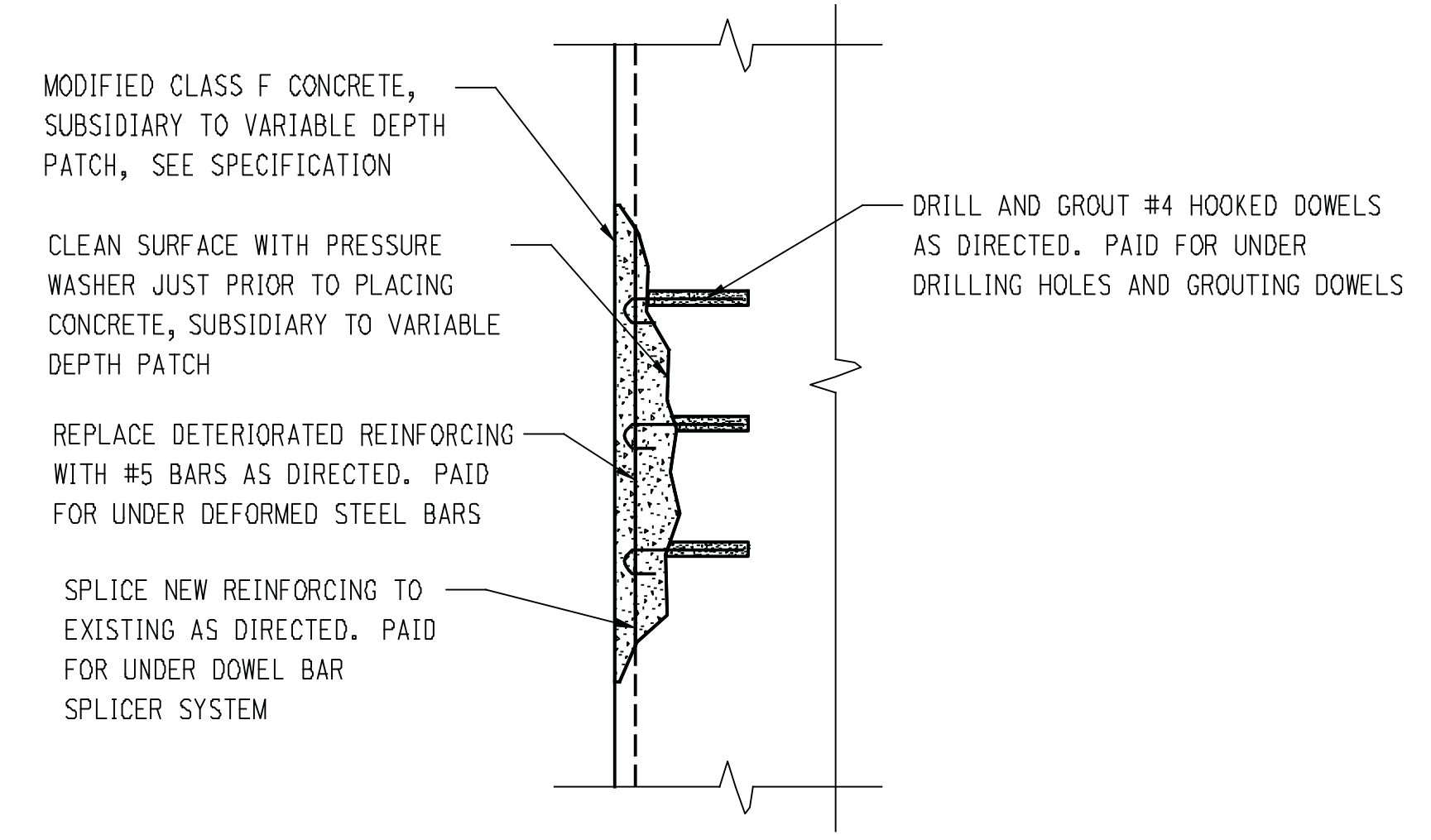


CONCRETE REPAIR NOTES:

1. PRIOR TO ANY DEMOLITION, THE EXISTING STRUCTURE SHALL BE INSPECTED FOR DETERIORATED CONCRETE JOINTLY BY THE ENGINEER AND CONTRACTOR AND MARKED. THE CONCRETE SHALL BE SAW CUT 1/2" DEEP WHERE MARKED AND ALL DETERIORATED CONCRETE SHALL BE REMOVED. THE CONCRETE SURFACES SHALL BE PRESSURE WASHED PRIOR TO PLACING THE NEW CONCRETE. COST OF INSPECTION, SAW CUTTING, REMOVAL, CLEANING, AND PLACING CONCRETE SHALL BE INCLUDED IN VARIABLE DEPTH PATCH.
2. CARE SHALL BE TAKEN TO NOT DAMAGE ANY EXISTING REINFORCING. EXISTING REINFORCING SHALL BE CLEANED AND STRAIGHTENED TO FIT BACK IN THE NEW STRUCTURE. CLEANING OR STRAIGHTENING REINFORCING IS INCLUDED IN VARIABLE DEPTH PATCH. REINFORCING THAT IS DETERIORATED SHALL BE REPLACED OR SPLICED TO NEW REINFORCING AS DIRECTED BY THE ENGINEER. NEW REINFORCING WILL BE PAID FOR UNDER DEFORMED STEEL BARS. REINFORCING THAT IS DAMAGED BY THE CONTRACTOR SHALL BE REPAIRED OR REPLACED WITHOUT COMPENSATION.
3. CONCRETE SHALL BE REMOVED BY SMALL CHIPPING HAMMERS WEIGHING LESS THAN 20 LBS WITH THE BIT REMOVED. ONLY CHISEL POINT BITS SHALL BE USED. BITS SHALL BE RE-SHARPENED AS DIRECTED BY THE ENGINEER. SHARPENING BITS IS INCLUDED IN VARIABLE DEPTH PATCH. BITS SHALL BE ORIENTED AT AN ANGLE LESS THAN 60 DEGREES TO THE CONCRETE SURFACE DURING CHIPPING SO AS TO NOT CAUSE IMPACT FRACTURES TO THE CONCRETE TO REMAIN.
4. THE AMOUNT OF CONCRETE THAT CAN BE REMOVED PRIOR TO REPLACING WITH NEW CONCRETE IS LIMITED. THE STRUCTURE SHALL BE REPAIRED IN 6'-0" (MAX) WIDE STRIPS. THE DETERIORATED CONCRETE WITHIN A STRIP SHALL BE REMOVED AND REPAIRED PRIOR TO PROCEEDING WITH AN ADJACENT STRIP. THE INTENT IS TO MAINTAIN THE INTEGRITY OF THE ARCH TO SUPPORT DEAD LOAD ONLY WHILE REPAIRING DETERIORATED CONCRETE. CONTRACTOR BID PRICE SHALL ACCOUNT FOR REPAIRING THE BRIDGE IN MULTIPLE STRIPS IN EACH STAGE.
5. CONTRACTOR SHALL USE TARPS OR OTHER DEBRIS SHIELD UNDER AREAS OF DEMOLITION TO COLLECT DEBRIS. CONTRACTOR SHALL PICK UP ANY DEBRIS THAT FALLS ON THE GROUND AT THE END OF EACH DAY AND AS DIRECTED BY THE ENGINEER.
6. THE LIMITS OF DETERIORATION SHOWN ON THE PLANS WAS TAKEN FROM FIELD INSPECTION REPORTS. THESE REPORTS ARE AVAILABLE FOR REVIEW FROM THE CONNECTICUT DEPARTMENT OF TRANSPORTATION. PETROGRAPHIC TEST REPORTS ON THE DURABILITY AND SOUNDNESS OF THE CONCRETE ARE AVAILABLE FROM THE BOROUGH OF NAUGATUCK. THE ACTUAL LIMITS TO BE REPAIRED MAY BE SIGNIFICANTLY DIFFERENT FROM THOSE SHOWN. THE CONTRACTOR SHALL PROVIDE THE ENGINEER ACCESS TO ALL CONCRETE SURFACES. THE CONTRACTOR AND ENGINEER SHALL DETERMINE AND MARK THE ACTUAL LIMITS OF REMOVAL IN THE FIELD.



CONCRETE REMOVAL DETAIL



CONCRETE REPAIR DETAIL

2:23:09 PM C:\DOT\Workspaces\standards\tables\pen\DOT_pentable_b\ack.tbl
3:11:51 PM C:\DOT\Workspaces\standards\tables\pen\DOT_pentable_b\ack.tbl
6/22/2012

1	6/22/12	REVISED HAMMER WEIGHT	SHEET NO.	Plot Date: 6/22/2012
REV.	DATE	REVISION DESCRIPTION		

DESIGNER/DRAFTER: **CRH**
CHECKED BY: **RJF**
SCALE AS NOTED

BOROUGH OF NAUGATUCK
DEPARTMENT OF PUBLIC WORKS

CIA
CLOUGH HARBOUR & ASSOCIATES LLP
2150 Blue Dome Highway, Suite 212, Rocky Hill, CT 06067-2508
Tel: (860) 251-4827 • www.ciaharbour.com

PROJECT TITLE: **MAPLE STREET OVER NAUGATUCK RIVER**

TOWN: NAUGATUCK	PROJECT NO. 9087-4214
DRAWING TITLE: ABUTMENT REPAIR DETAIL	SHEET NO. 14 of 25

