

North Main Street Reconstruction
Naugatuck, Connecticut

LOTICIP #L087-0002
MMI #2129-34-06

ADDENDUM NO. 1
August 10, 2018

REVISIONS:

Plans:

- Typical Cross Sections – Dwg. No. TYP-1 (Sheet No. 03)
The Mill & Overlay typical cross section has been revised to show "2" Fine Mill and 2" HMA S0.375 Overlay." Sheet No. 03 of the plan set shall be replaced with Sheet No. 03A, attached.
- Miscellaneous Details – Dwg. No. MDS-01 (Sheet No. 04)
"Storm Drainage Trench – Permanent Pavement Repair (Mill and Overlay Area)" and "Storm Drainage Trench – Temporary Pavement Repair" details have been added. Sheet No. 04 of the plan set shall be replaced with Sheet No. 04A, attached.

Project Manual:

- Bid Schedule – page PF-4
Quantities for the following items have been revised:
 - Item # 0212003 – Subbase
 - Item # 0406171 – HMA S0.5
 - Item # 0406172 – HMA S0.375*
 - Item # 0406236 – Material for Tack Coat*

Page PF-4 of the Project Manual shall be replaced with page PF-4A, attached.

*In addition to the item quantity adjustments for their inclusion in storm drainage trench pavement repair, these quantities were also increased for the pavement overlay on Linden Street and Smith Street, which was omitted in the original bid schedule.

QUESTIONS FROM CONTRACTORS/SUBCONTRACTORS AND CORRESPONDING ANSWERS:

Email from Guerrero Construction Co. – Wednesday, August 8, 2018

Question 1: What are the details for the trench patching on Linden Street and Smith Street for the drainage installation? These areas are outside of the full depth reconstruction areas.

North Main Street Reconstruction
Naugatuck, Connecticut

LOTICIP #L087-0002
MMI #2129-34-06

Response: **Details for permanent and temporary pavement repair have been added to the plans. Please see "Revisions" above.**

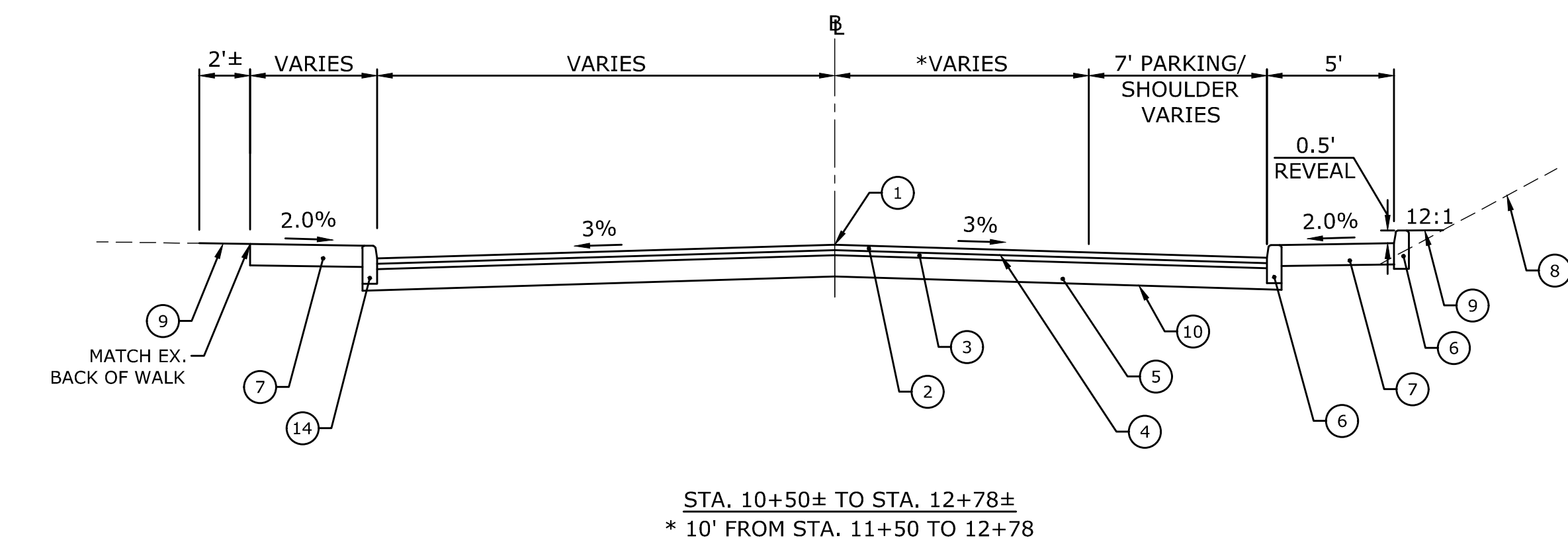
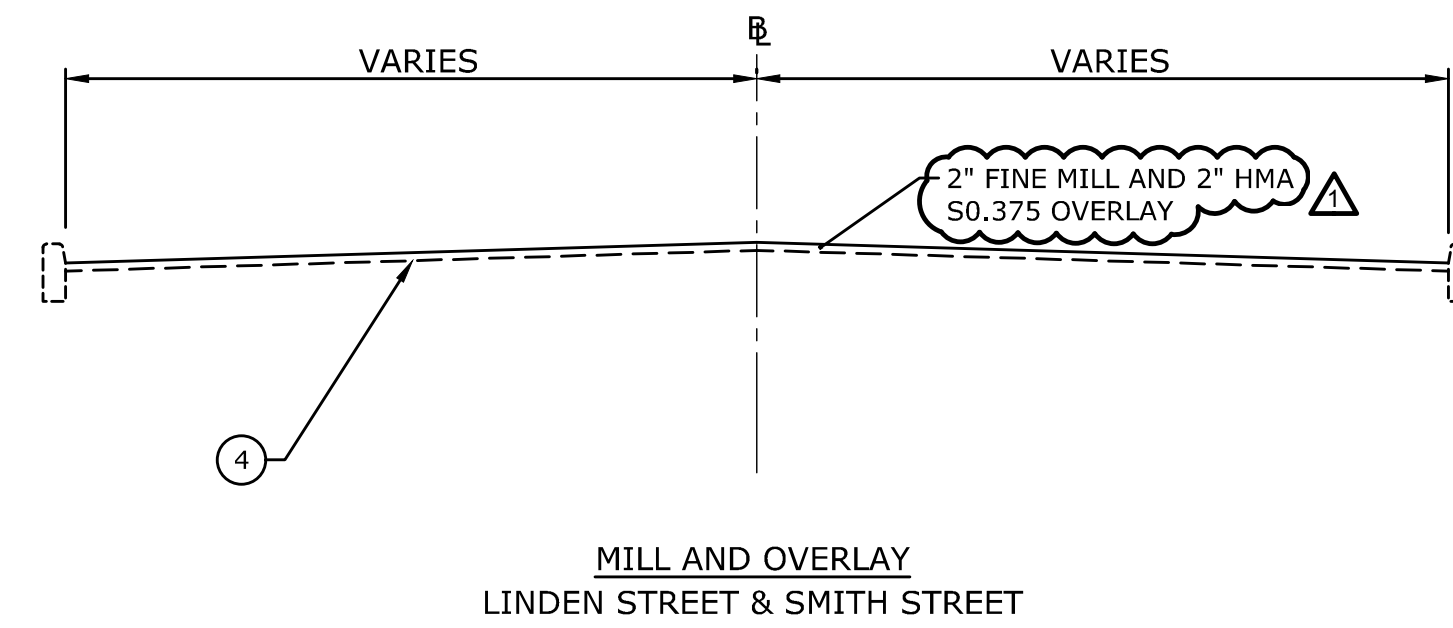
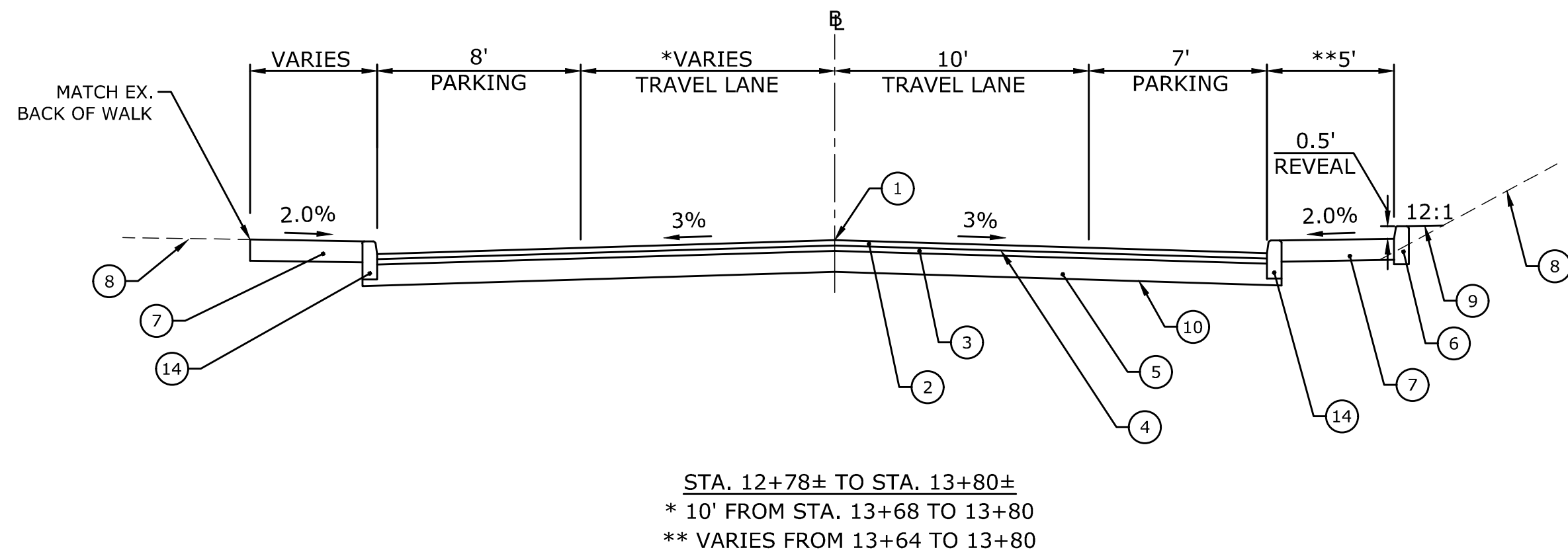
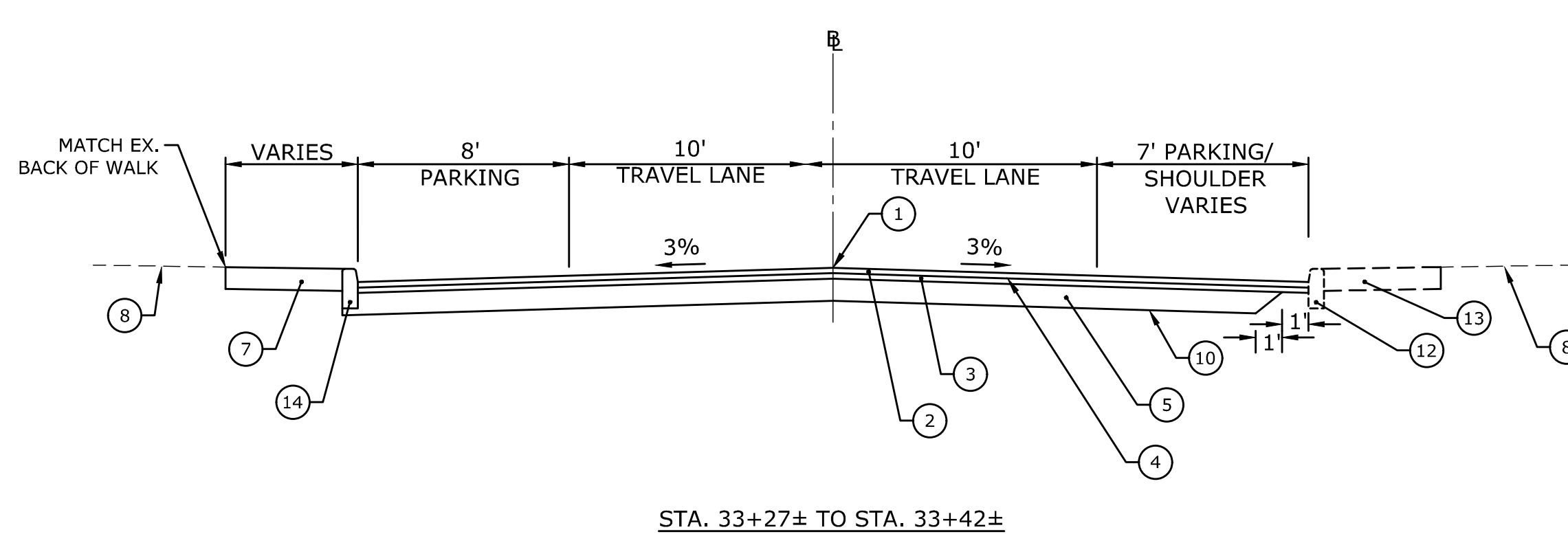
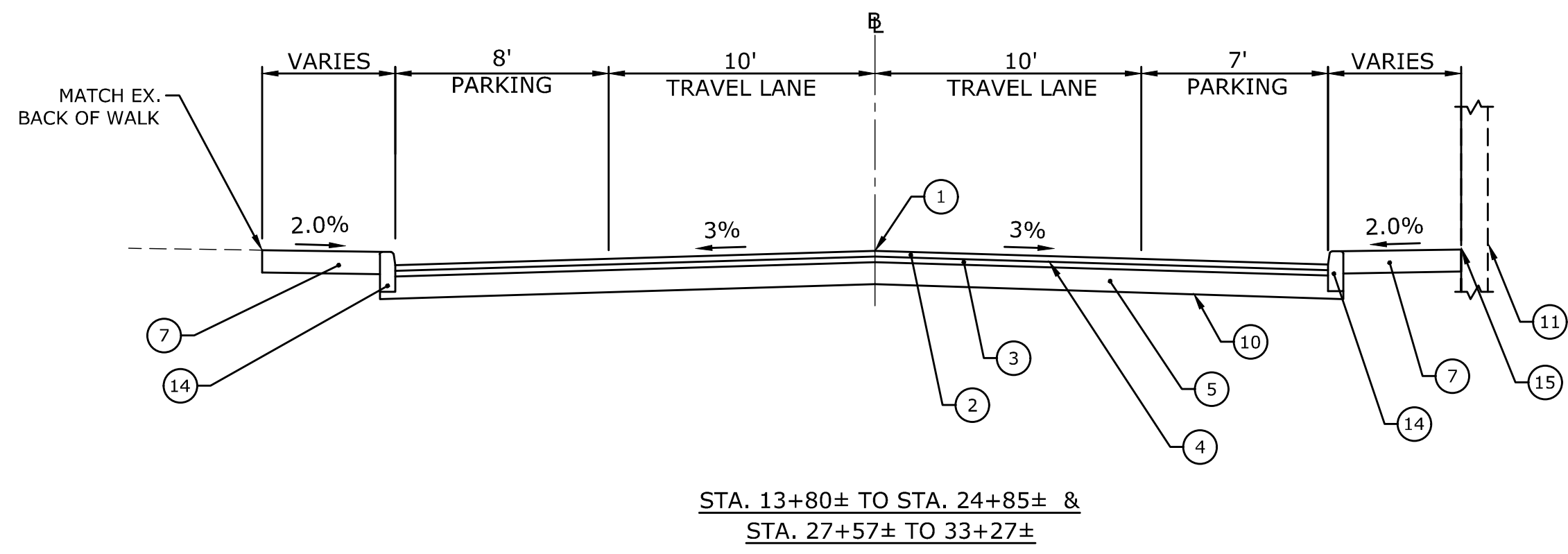
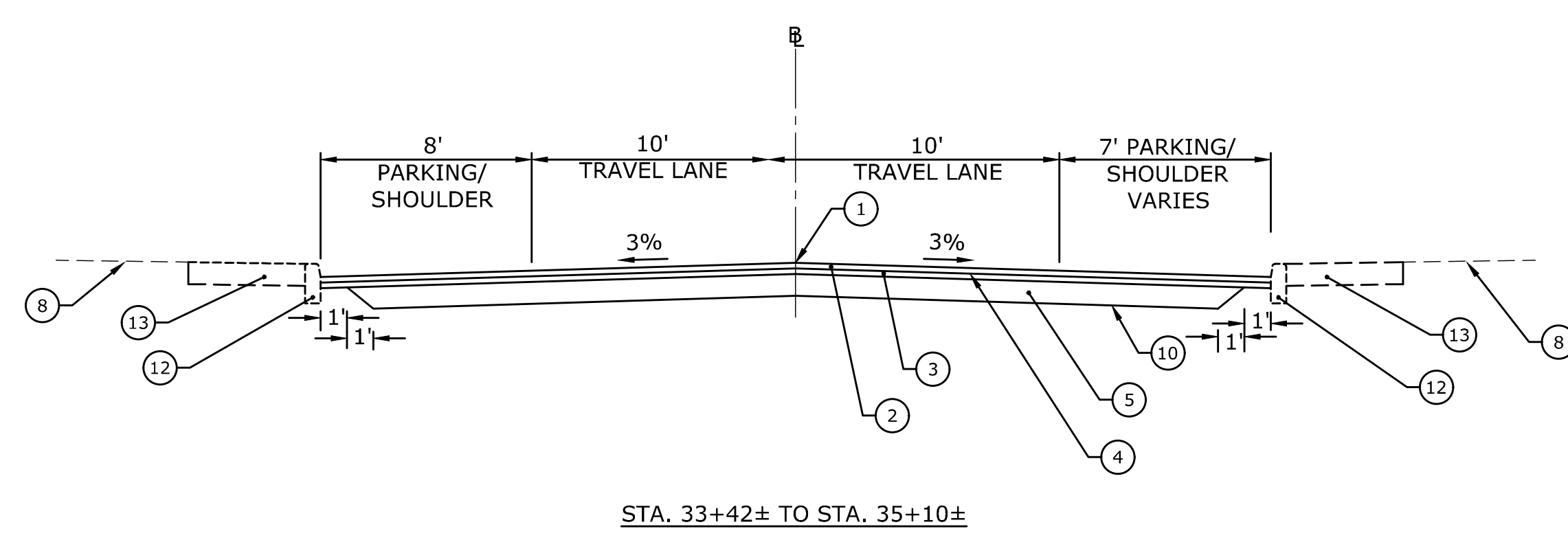
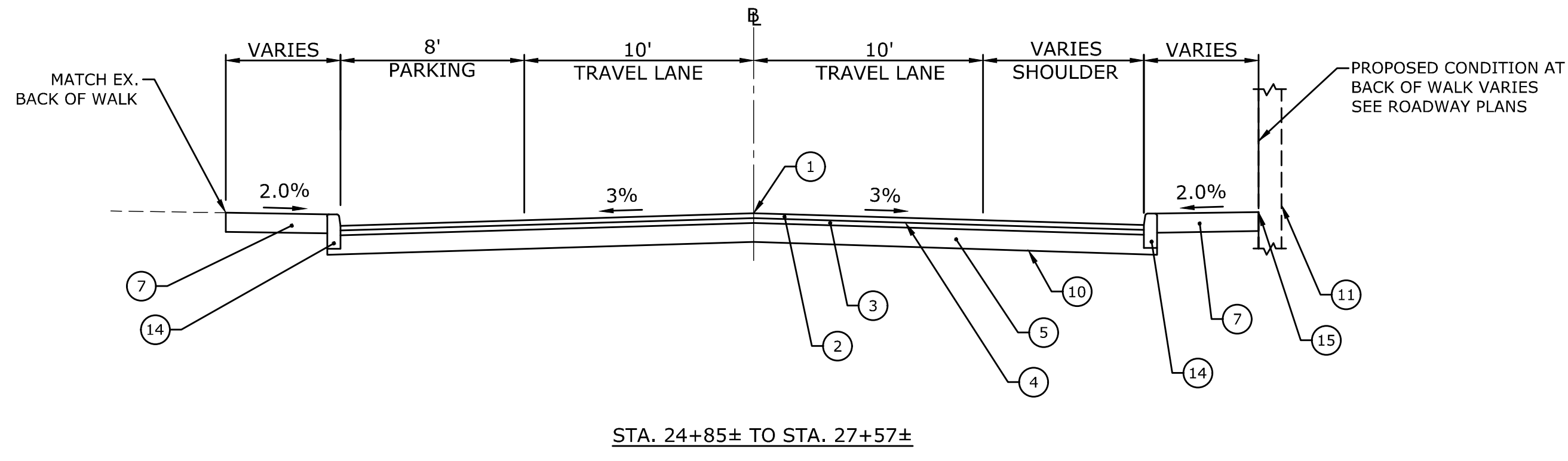
Question 2: *How is the trench patching (temporary or permanent) to be paid?*

Response: **Proposed materials shown in the temporary and permanent pavement repair details shall be paid for under their respective pay item, as shown in the details on Dwg. No. MDS-01 (Sheet No. 04A), attached. Quantities for those items have been revised accordingly. Please see "Revisions" above.**

Attachments

2129-34-06-au1018-addendum.doc

15
 14
 13
 12
 11
 10
 9
 8
 7
 6
 5
 4
 3
 2
 1

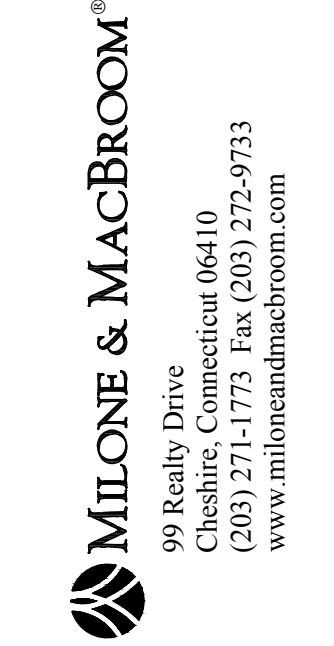


LEGEND

- ① POINT OF APPLICATION OF GRADE
- ② 2.5" HMA S0.375 (DESIGN LEVEL 2)
- ③ 2.5" HMA S0.5 (DESIGN LEVEL 2)
- ④ MATERIAL FOR TACKCOAT
- ⑤ 10" SUBBASE
- ⑥ CONCRETE CURBING (6" REVEAL)
- ⑦ CONCRETE SIDEWALK
- ⑧ EXISTING GRADE
- ⑨ 4" TOPSOIL & TURF ESTABLISHMENT
- ⑩ FORMATION OF SUBGRADE
- ⑪ EXISTING RETAINING WALL (SEE ITEM 0202911A "CONDITION SURVEY")
- ⑫ EXISTING CURBING TO REMAIN
- ⑬ EXISTING SIDEWALK TO REMAIN
- ⑭ GRANITE STONE CURBING (5"X18")
- ⑮ EXPANSION JOINT FILLER - PER M.03.08-2 (INCLUDED IN COST OF "CONCRETE SIDEWALK")

NOTE: AREAS BEYOND THE LIMITS OF THE TYPICAL CROSS SECTIONS PROVIDED CONSIST OF THE SAME FULL-DEPTH PAVEMENT STRUCTURE, INCLUDING HMA AND SUBBASE THICKNESS, AS SHOWN HEREIN.

NORTH MAIN STREET

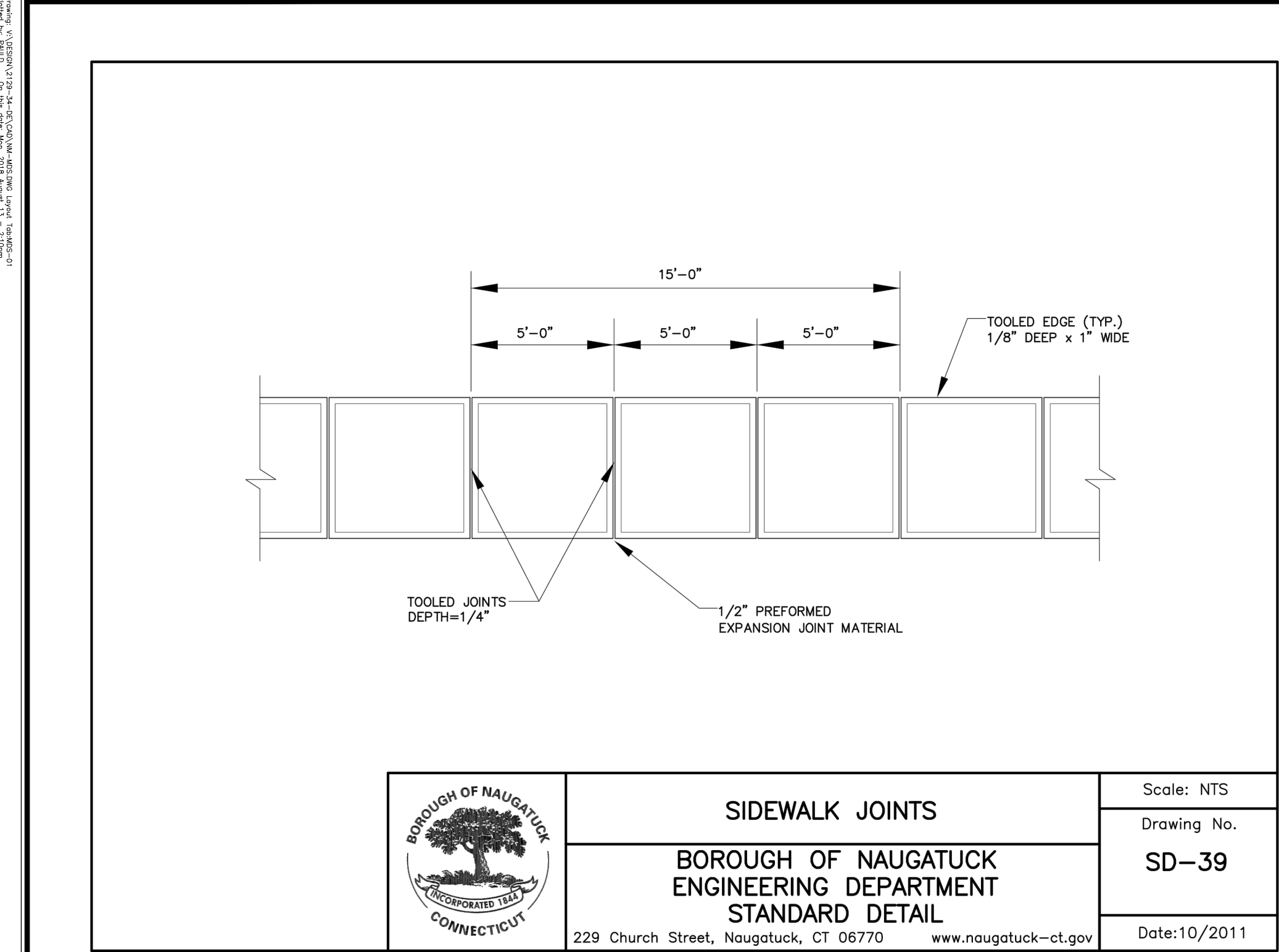


DESCRIPTION	DATE	BY
ADDENDUM NO. 1	08/10/18	PJD

TYPICAL CROSS SECTIONS
NORTH MAIN STREET RECONSTRUCTION
 NAUGATUCK, CONNECTICUT

TDS DESIGNED	TDS DRAWN	PD CHECKED
SCALE N.T.S.		
DATE JUNE 22, 2018		
PROJECT NO. 2129-34		
DWG NO. TYP-1		

03A

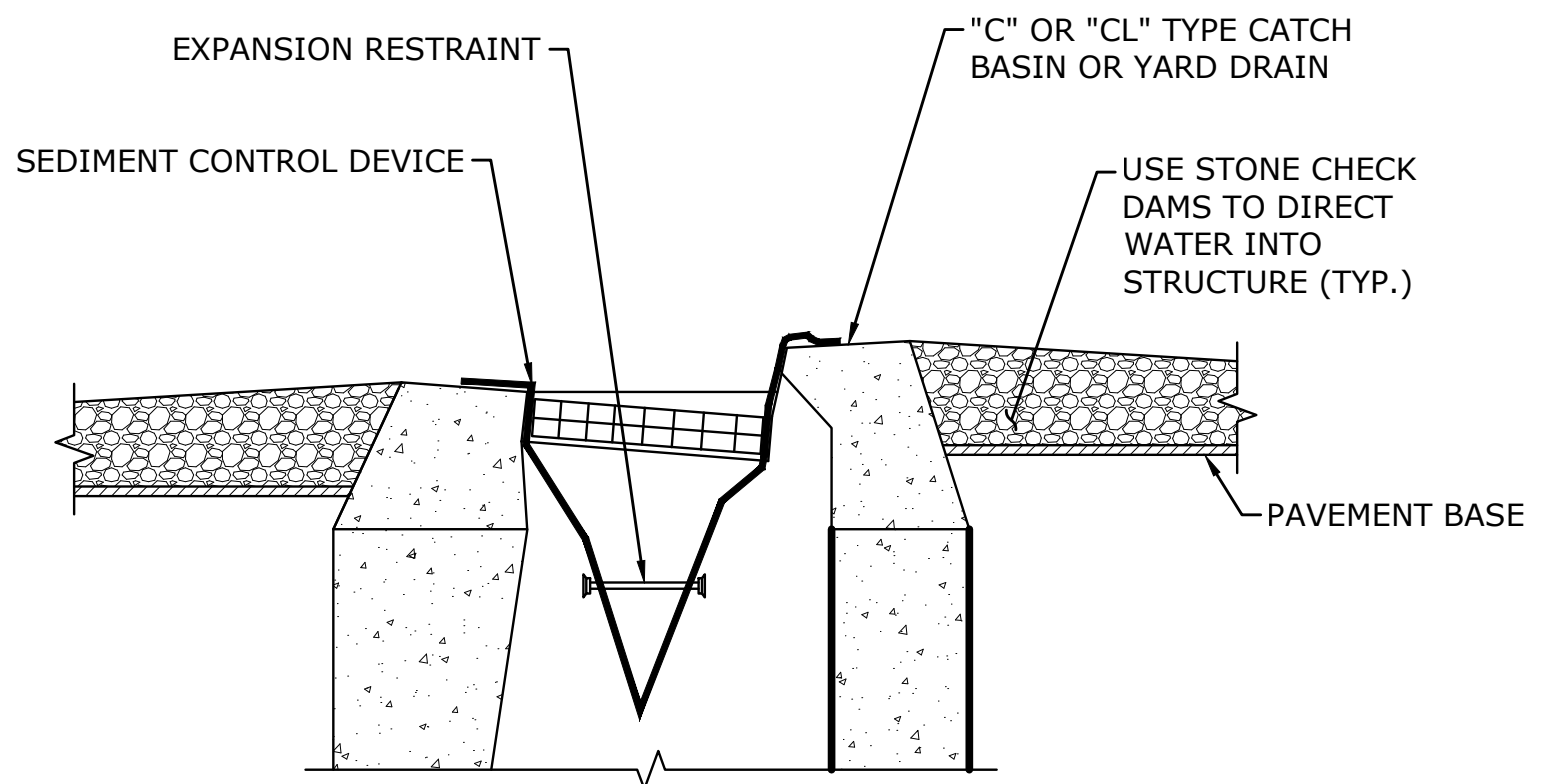


SIDWALK JOINTS

BOROUGH OF NAUGATUCK
ENGINEERING DEPARTMENT
STANDARD DETAIL

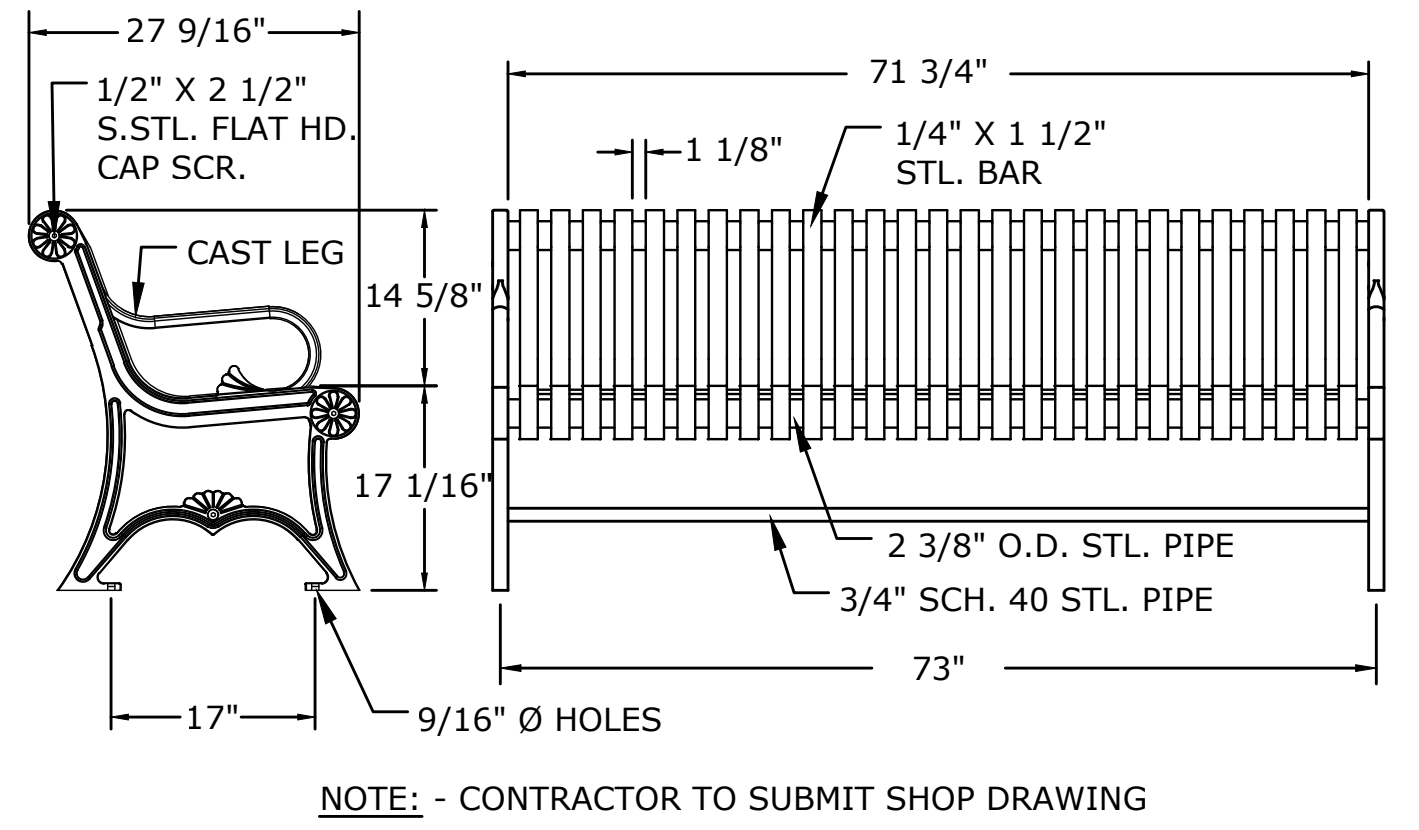
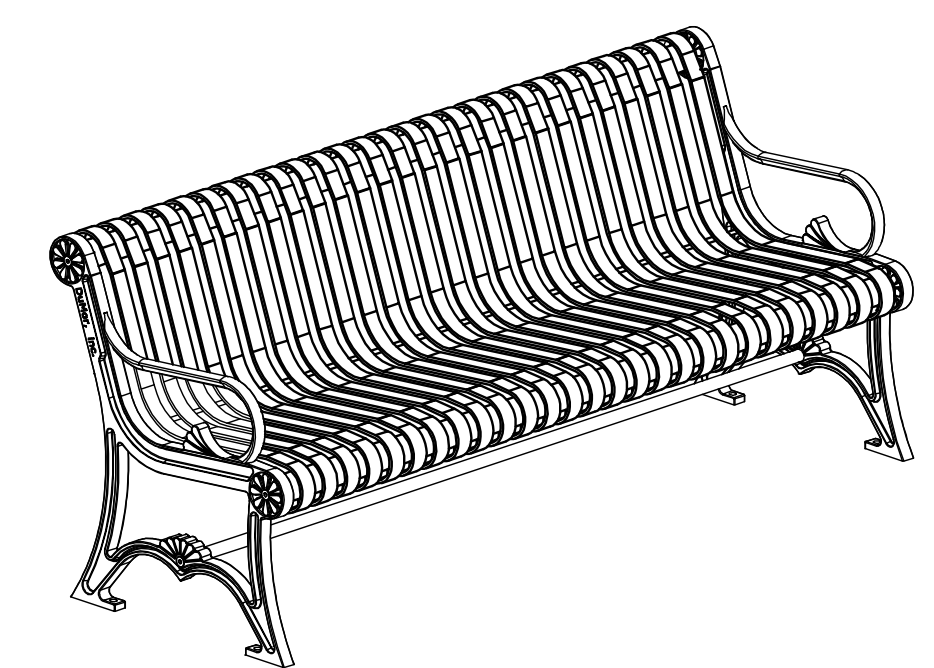
229 Church Street, Naugatuck, CT 06770 www.naugatuck-ct.gov

Scale: NTS
Drawing No. SD-39
Date: 10/2011



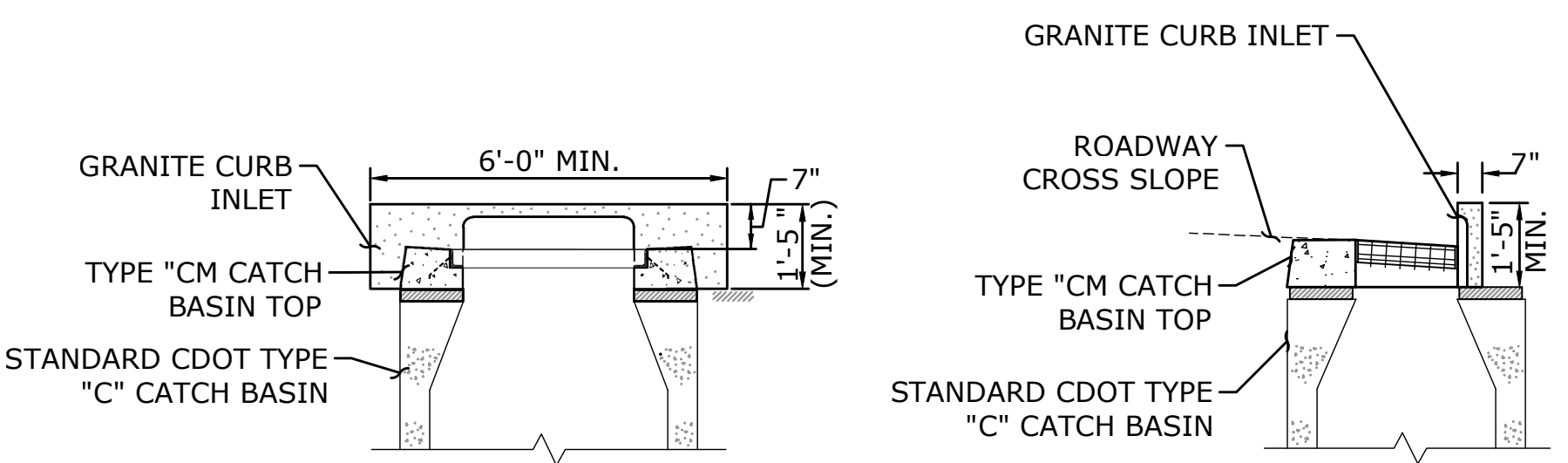
NOTE
SEDIMENT CONTROL DEVICE SHALL BE FURNISHED, INSTALLED, AND MAINTAINED AT ALL CATCH BASIN INLETS UNTIL DISTURBED UPLAND AREAS TRIBUTARY TO THE INLET HAVE BEEN STABILIZED TO THE SATISFACTION OF THE ENGINEER. MATERIAL, INSTALLATION AND MAINTENANCE SHALL BE PAID FOR UNDER ITEM #0219011A - "SEDIMENTATION CONTROL SYSTEM AT CATCH BASIN".

SEDIMENTATION CONTROL AT CATCH BASIN

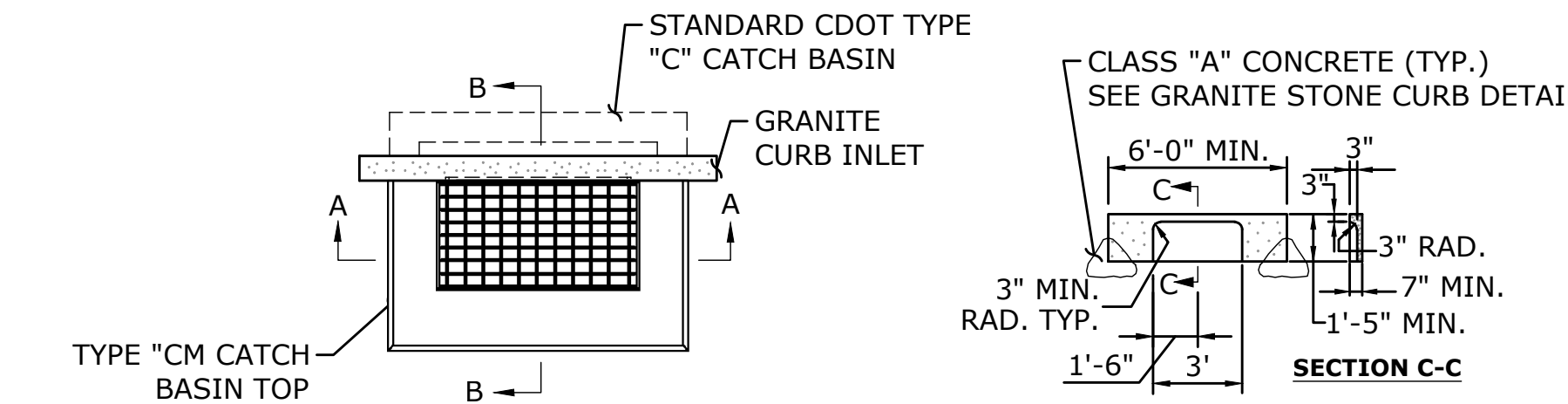


BENCH
NOT TO SCALE

NOTE: - CONTRACTOR TO SUBMIT SHOP DRAWING

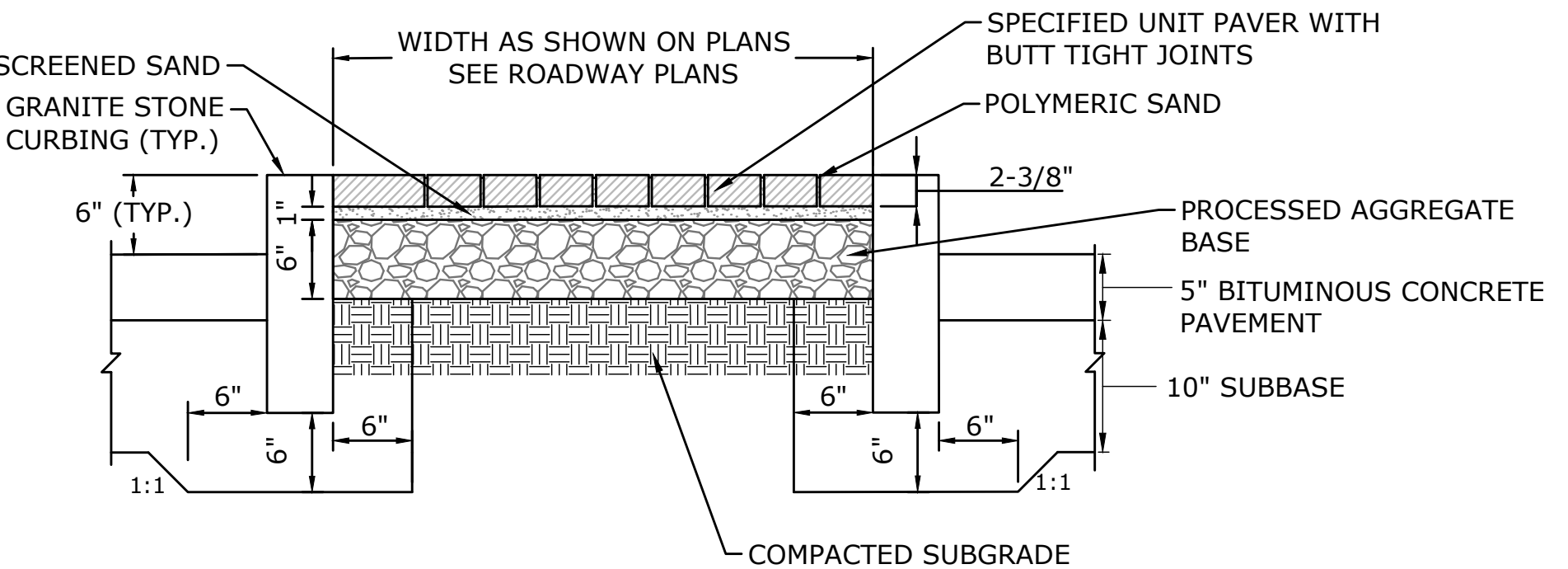


SECTION A-A **SECTION B-B**

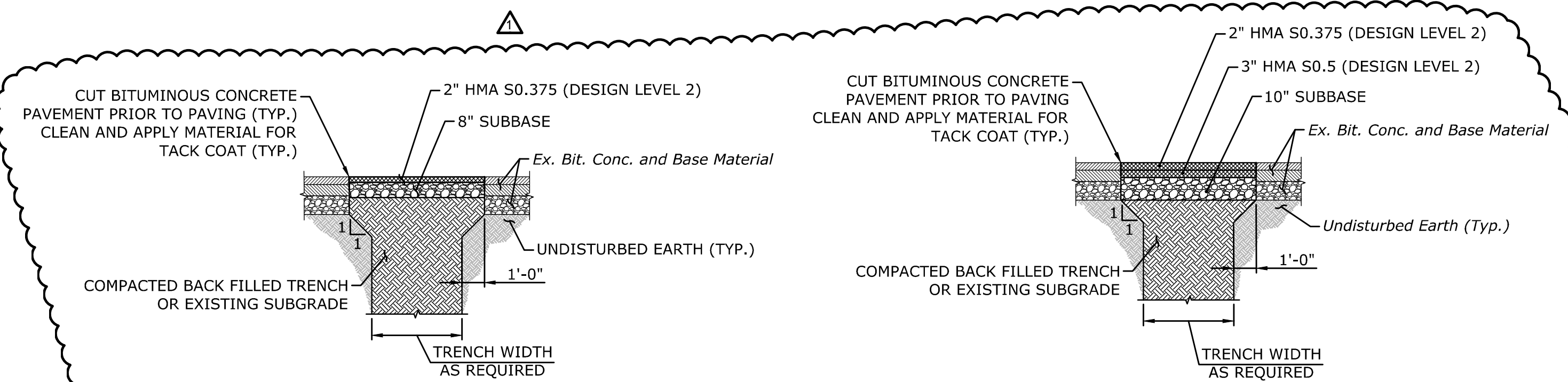


PLAN **ELEVATION**

GRANITE CURB INLET
N.T.S.



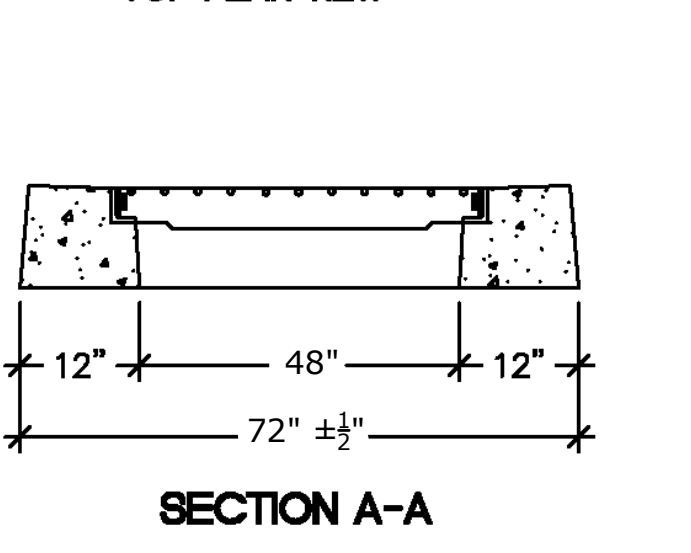
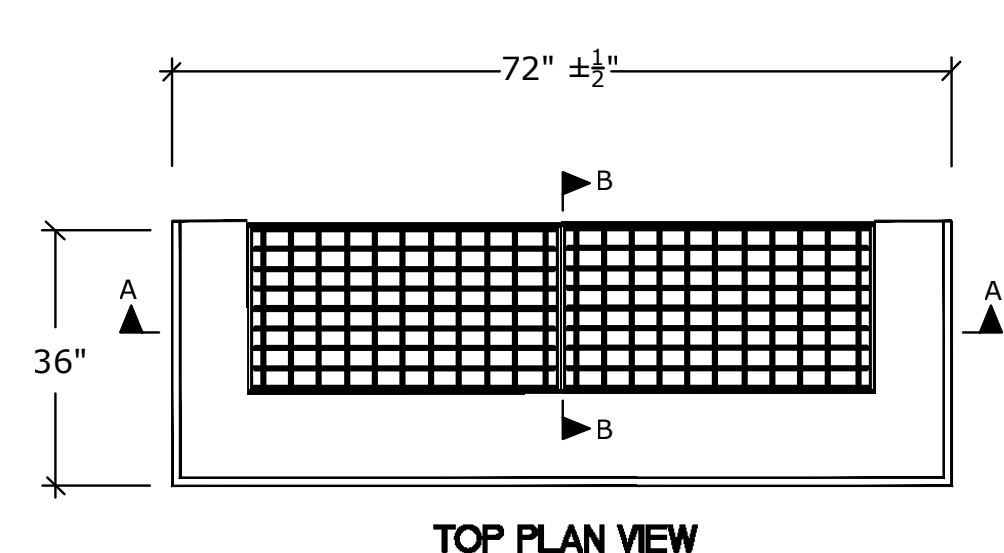
UNIT PAVER ISLAND
NOT TO SCALE



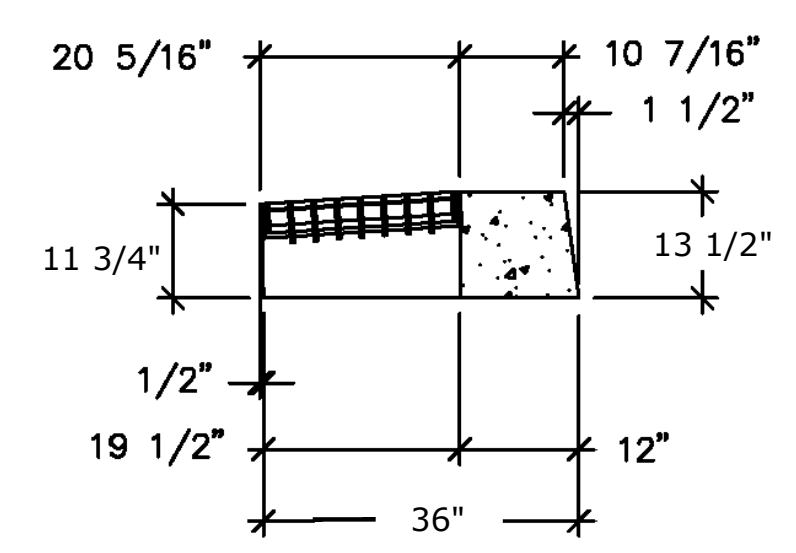
NOTES:
PAVEMENT SHALL BE TEMPORARILY REPAIRED FOR STORM DRAINAGE TRENCHES WITHIN THE LIMITS OF FULL-DEPTH ROADWAY RECONSTRUCTION, AS SHOWN. ALL WORK AND MATERIAL SHALL BE PAID UNDER THEIR RESPECTIVE PAY ITEM.

STORM DRAINAGE TRENCH - TEMPORARY PAVEMENT REPAIR

STORM DRAINAGE TRENCH - PERMANENT PAVEMENT REPAIR (MILL & OVERLAY AREA)



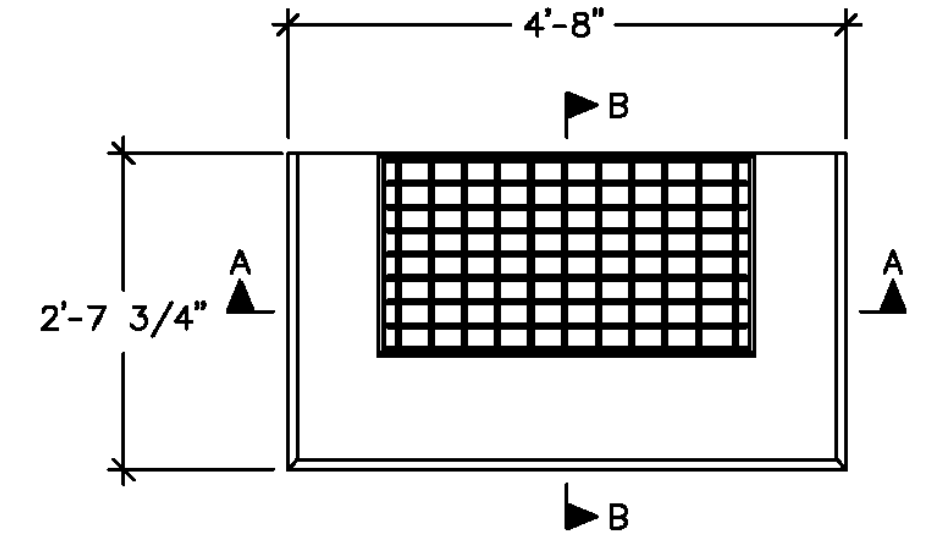
TYPE II \"/>



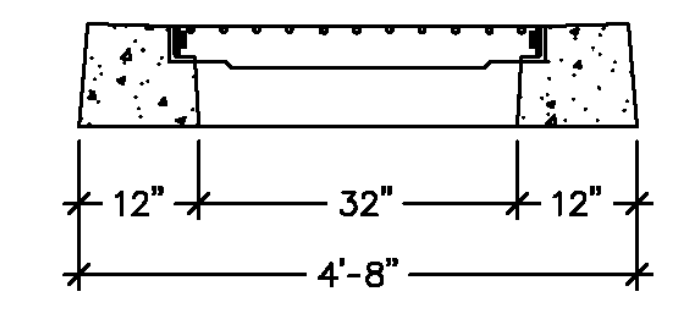
SECTION B-B

DESIGN CONFORMS TO CTDOT AND LOCAL SPECIFICATIONS.

- DESIGN NOTES:**
1. REINFORCING STEEL DEFORMED BARS CONFORM TO LATEST ASTM SPECIFICATION A615, GRADE 60.
 2. CONCRETE COMPRESSIVE STRENGTH- 4,000 PSI AT 28 DAYS SELF COMPACTING CONCRETE MIX.
 3. METHOD OF MANUFACTURE: WET CAST.
 4. SECTION IS MONOLITHIC.
 5. FRAME & GRATE- PAINTED OR GALVANIZED AVAILABLE.
 6. GRATE- TYPE A OR B ARE AVAILABLE.

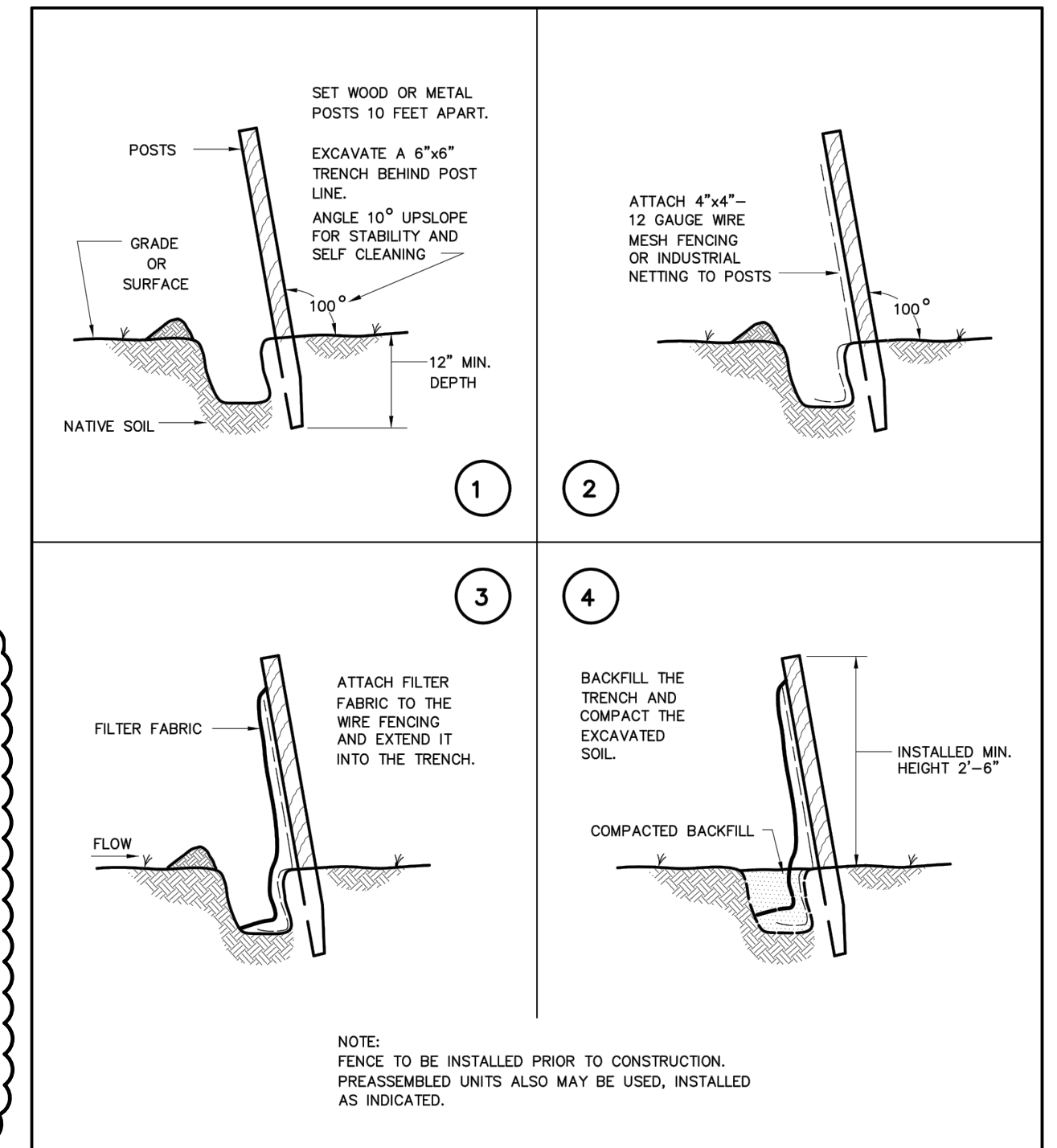


TOP PLAN VIEW



SECTION A-A

TYPE \"/>



NOTE:
FENCE TO BE INSTALLED PRIOR TO CONSTRUCTION. PREASSEMBLED UNITS ALSO MAY BE USED, INSTALLED AS INDICATED.

FILTER FABRIC SEDIMENT CONTROL FENCE PLACEMENT AND CONSTRUCTION

BOROUGH OF NAUGATUCK
ENGINEERING DEPARTMENT
STANDARD DETAIL

229 Church Street, Naugatuck, CT 06770 www.naugatuck-ct.gov

Scale: NTS
Drawing No. SD-41
Date: 10/2011

DESIGN CONFORMS TO CTDOT AND LOCAL SPECIFICATIONS.

- DESIGN NOTES:**
1. REINFORCING STEEL DEFORMED BARS CONFORM TO LATEST ASTM SPECIFICATION A615, GRADE 60.
 2. CONCRETE COMPRESSIVE STRENGTH- 4,000 PSI AT 28 DAYS SELF COMPACTING CONCRETE MIX.
 3. METHOD OF MANUFACTURE: WET CAST.
 4. SECTION IS MONOLITHIC.
 5. FRAME & GRATE- PAINTED OR GALVANIZED AVAILABLE.
 6. GRATE- TYPE A OR B ARE AVAILABLE.

MILONE & MACBROOM
99 Realty Drive
Cheshire, Connecticut 06410
(203) 271-1773 Fax (203) 272-9733
www.miloneandmacbroom.com

DATE	BY	DESCRIPTION
08/10/18	PJD	ADDENDUM NO. 1

MISCELLANEOUS DETAILS
NORTH MAIN STREET RECONSTRUCTION
NAUGATUCK, CONNECTICUT

PJD	JLM	MJJ
DESIGNED	DRAWN	CHECKED

SCALE: NOT TO SCALE
DATE: JUNE 22, 2018
PROJECT NO.: 2129-34
DRAWING NO.: MDS-01

04A

ITEM NO.	ITEM/DESCRIPTION	UNIT	QTY	UNIT PRICE		TOTAL AMOUNT (IN FIGURES)
				IN FIGURES	IN WRITING	
0205004	Rock in Trench Excavation (0-10' Deep)	CY	75			
0209001	Formation of Subgrade	SY	11,050			
0210100	Anti-Tracking Pad	SY	180			
0212003	Subbase	CY	3,450			
0219001	Sedimentation Control System	LF	360			
0219011A	Sedimentation Control at Catch Basin	Ea.	29			
0406171	HMA S0.5	Ton	1,660			
0406172	HMA S0.375	Ton	1,900			
0406236	Material For Tack Coat	Gal.	1,300			
0406275A	Fine Milling of Bituminous Concrete (0"to 4")	S.Y.	1,000			
0507167A	Type "CM" Catch Basin Top with Granite Inlet	Ea.	4			
0507201	Type "C-L" Catch Basin	Ea.	5			
0507222	Type "C-L" Catch Basin Double Grate-Type II	Ea.	1			
0507301A	Type "C" Drop Inlet with Type "CM" Top and Granite Inlet	Ea.	3			
0507449A	Type "C" Catch Basin with Type "CM" Catch Basin Top with Granite Inlet	Ea.	8			
0507467A	Type "C" Catch Basin Double Grate-Type II with Type "CM" Catch Basin Top with Granite Inlet	Ea.	1			
0507601	Manhole	Ea.	11			

RECONSTRUCTION OF NORTH MAIN STREET
LOT/CP PROJECT NO. L087-0002
NAUGATUCK, CT