

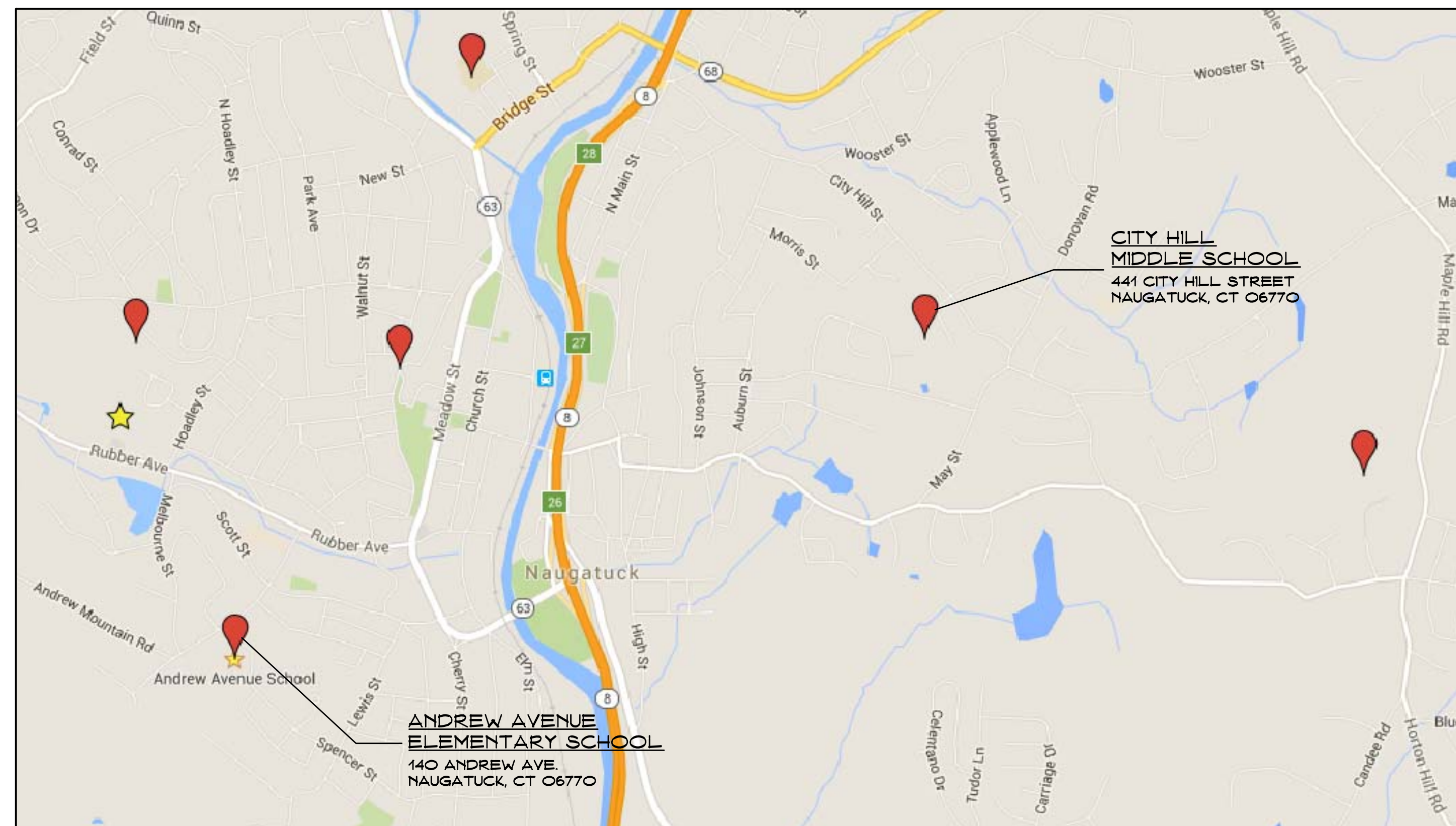
Naugatuck Public Schools

Paving & Site Upgrades

497 Rubber Avenue
Naugatuck, Connecticut 06770

- Andrew Avenue Elementary School
- City Hill Middle School

PROJECT LOCATION MAP



LIST OF DRAWINGS

SITE

- | | |
|-------|---|
| CS | COVER SHEET |
| CS100 | LAYOUT, MATERIALS & MARKING PLANS AND NOTES |
| CS101 | DETAILS |



SILVER / PETRUCCELLI + ASSOCIATES

Architects / Engineers / Interior Designers

3190 Whitney Avenue, Hamden, CT 06518-2340

Tel. 203 230 9007 Fax. 203 230 8247

silverpetrucci.com

June 8, 2018

ISSUED FOR BID

SYMBOL LEGEND	
	EXISTING ELEMENT TO REMAIN
	WORK LIMIT BOUNDARY - SAWCUT JOINT BETWEEN PAVEMENT TO BE REMOVED & E.T.R. PAVEMENT
	PAVEMENT BOUNDARY W/OUT CURBING
	PAVEMENT BOUNDARY WITH CURBING (PROVIDE CURBING)
	EXISTING BITUMINOUS PAVEMENT TO BE REMOVED & REPLACED
	EXISTING BITUMINOUS SIDEWALK TO BE REMOVED & REPLACED
	EXISTING CONCRETE WALK/CURB TO BE REMOVED & REPLACED
	DETECTABLE WARNING PAVERS
	SIGN
	FLUSH CONDITION
	FENCING (EXIST. TO REMAIN)
	EXIST. CATCH BASIN (SEE GENERAL NOTES)
	EXIST. MANHOLE (SEE GENERAL NOTES)

GENERAL NOTES

- CONTRACTOR IS RESPONSIBLE FOR CONTACTING CALL BEFORE YOU DIG LOCATING SERVICE AT 1-800-922-4465 AT LEAST SEVENTY-TWO (72) HOURS PRIOR TO THE START OF DEMOLITION AS REQUIRED TO HAVE ALL UTILITIES LOCATED AND MARKED BEFORE WORK BEGINS. CONTRACTOR IS ALSO RESPONSIBLE FOR ENGAGING SERVICES OF INDEPENDENT UTILITY LOCATING SERVICE TO LOCATE UNDERGROUND UTILITIES NOT COVERED BY CBD.
- CONTRACTOR IS RESPONSIBLE FOR REPAIRING OR REPLACING ANY UTILITIES DAMAGED DURING CONSTRUCTION.
- SYMBOLS AND LEGENDS OF PROJECT FEATURES ARE GRAPHIC REPRESENTATIONS AND ARE NOT NECESSARILY SHOWN ON THE DRAWINGS TO SCALE OR TO THEIR ACTUAL DIMENSIONS OR LOCATION. COORDINATE DETAIL SHEET DIMENSIONS, MANUFACTURER'S LITERATURE, SHOP DRAWINGS AND FIELD MEASUREMENTS OF SUPPLIED PRODUCTS FOR LAYOUT OF THE PROJECT FEATURES.
- DO NOT RELY SOLELY ON ELECTRONIC VERSIONS OF DRAWINGS, SPECIFICATIONS AND DATA FILES THAT ARE PROVIDED BY THE ARCHITECT. FIELD VERIFY LOCATION OF PROJECT FEATURES AND NOTIFY ARCHITECT IMMEDIATELY IF DISCREPANCIES ARE FOUND.
- PERFORM NECESSARY CONSTRUCTION NOTIFICATIONS, APPLY FOR AND OBTAIN NECESSARY PERMITS, PAY FEES, AND POST BONDS ASSOCIATED WITH THE WORK AS REQUIRED BY THE CONTRACT DOCUMENTS.
- THE CONTRACTOR IS RESPONSIBLE FOR PROTECTING AND MAINTAINING UTILITIES WITHIN THE PROJECT AREA OF WORK.
- ALL EXISTING MANHOLES, CATCH BASIN GRATES, VALVE COVERS AND OTHER SIMILAR STRUCTURES SHALL BE RESET WITH FINAL GRADES. REPLACE ANY DAMAGED RIMS, TOPS, GRATES AND VALVE COVERS. REMOVE EXISTING CATCH BASIN TOPS & PROVIDE NEW PRECAST CONCRETE TOPS & GRATES TO MATCH EXISTING SIZE, STYLE & CONFIGURATION (VERIFY IN FIELD).
- PROVIDE ADA SIDEWALK RAMP AT ALL TRANSITIONS BETWEEN SIDEWALKS AND PAVED DRIVEWAY/PARKING AREAS. SEE DETAIL L/C/S101.

- WORK RESTRICTIONS:**
- DO NOT CLOSE OR OBSTRUCT ROADWAYS, SIDEWALKS, FIRE HYDRANTS OR UTILITIES WITHOUT APPROPRIATE PERMITS AND AUTHORIZATION FROM NAUGATUCK PUBLIC SCHOOLS & A&J.
 - WORK IS RESTRICTED TO THE HOURS OF LOCAL BUSINESS OPERATIONS PER THE BOROUGH OF NAUGATUCK.
 - HOURS OF WORK SHALL BE COORDINATED WITH NAUGATUCK PUBLIC SCHOOLS AT EACH WORK LOCATION INCLUDING SCHOOL STAFF (PRINCIPAL & CUSTODIAN) AND DISTRICT FACILITIES MANAGER.

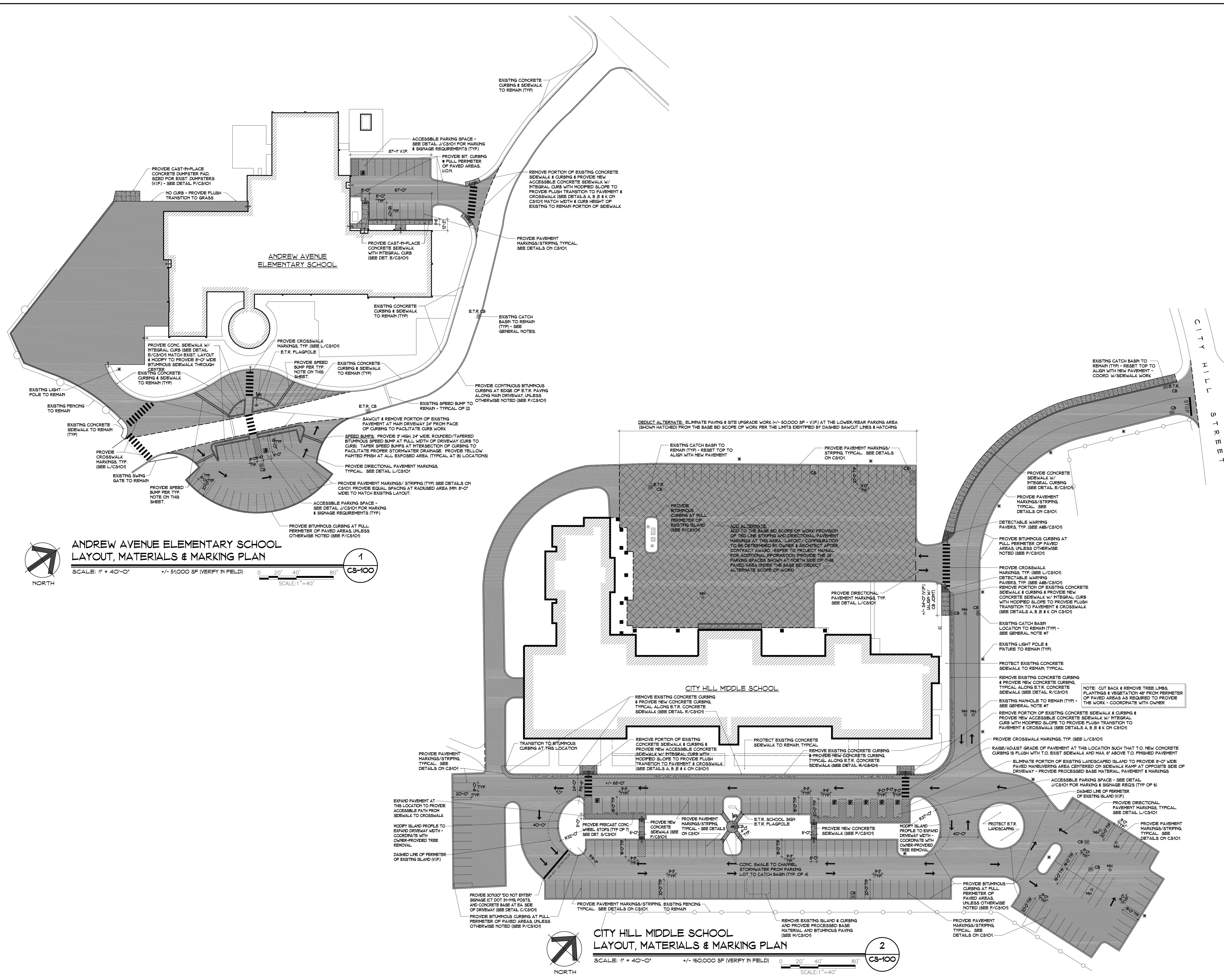
- REGULATORY REQUIREMENTS:**
- WITHIN LOCAL RIGHTS-OF-WAY, PERFORM THE WORK IN ACCORDANCE WITH LOCAL MUNICIPAL STANDARDS.
 - WITHIN STATE RIGHTS-OF-WAY, PERFORM THE WORK IN ACCORDANCE WITH THE LATEST EDITION OF THE DEPARTMENT OF TRANSPORTATION'S STANDARD SPECIFICATIONS AND ISSUED REVISIONS/SUPPLEMENTS.
 - PROVIDE TRAFFIC SIGNAGE AND PAVEMENT MARKINGS IN CONFORMANCE WITH THE LATEST EDITION OF THE MANUAL OF UNIFORM TRAFFIC CONTROL DEVICES.
 - CONTRACTOR IS RESPONSIBLE FOR SITE SECURITY AND JOBSITE SAFETY. PERFORM CONSTRUCTION ACTIVITIES IN ACCORDANCE WITH OSHA STANDARDS AND LOCAL REQUIREMENTS.
 - CONTRACTOR IS RESPONSIBLE FOR PROVIDING SUITABLE BARRIERS AROUND THE AREA OF WORK TO RESTRICT PUBLIC AND OTHERWISE UNAUTHORIZED ACCESS TO THE JOBSITE.

- CONSTRUCTION LAYOUT:**
- PROVIDE PROPER TRANSITIONS BETWEEN EXISTING AND PROPOSED SITE IMPROVEMENTS. FIELD VERIFY EXISTING PAVEMENT AND GRADE ELEVATIONS AT THE INTERFACE WITH PROPOSED PAVEMENTS AND DRAINAGE STRUCTURES BEFORE START OF CONSTRUCTION.

- PAVEMENT:**
- AT A MINIMUM, CONSTRUCT ACCESSIBLE ROUTES, PARKING SPACES, RAMPS, SIDEWALKS AND WALLWAYS IN CONFORMANCE WITH THE FEDERAL AMERICANS WITH DISABILITIES ACT AND WITH STATE AND LOCAL LAWS AND REGULATIONS (MOST STRINGENT REQUIREMENTS GOVERN).
 - AT AREAS OF DAMAGED WEAR & BINDER COURSE, REMOVE 2" OF WEAR & BINDER COURSE DOWN TO BASE MATERIAL AROUND PERIMETER OF DAMAGED AREA. REPAIR & COMPACT BASE MATERIAL AND PROVIDE FULL BINDER & WEAR COURSE.
 - PAVEMENT GRADES FOR NEW AND RESURFACED AREAS SHALL BE ADJUSTED/GRADED TO PITCH WATER TO EXISTING CATCH BASINS TO ELIMINATE PONDING.

GRADING NOTES

- UNLESS NOTED OTHERWISE MEET LINE AND GRADE TO PROVIDE A SMOOTH TRANSITION AT ALL INTERFACES OF NEW AND EXISTING CURBS AND PAVEMENTS.
- ACCESSIBLE ROUTES' SLOPES SHALL BE 120 (8) OR LESS AND THE CROSS SLOPES SHALL NOT BE GREATER THAN 1/2 INCH AND SLOPES SHALL NOT BE GREATER THAN 120 UNLESS RAMPS OR LEFTS ARE PROVIDED.
- UNLESS NOTED OTHERWISE, CONCRETE PADS AT DOORS SHALL BE FITTED AT 2% AWAY FROM BUILDING.
- THE SLOPE OF ALL ACCESSIBLE PARKING SPACES SHALL NOT EXCEED 2% IN ANY DIRECTION.
- UNLESS SHOWN OTHERWISE, CROSS-PITCH ALL WALKS LOCATED ALONG CURBS AT 2% TOWARDS THE CURB.
- CARE IS TO BE TAKEN WHEN PAVING TO PROPERLY GRADE THE PARKING AREAS AND DRIVEWAYS IN ORDER TO AVOID PONDING AND PROVIDE PROPER DRAINAGE.
- REMOVE EXISTING & PROVIDE NEW PRECAST CONCRETE CATCH BASIN TOPS & GRATES AT EXISTING CATCH BASIN LOCATIONS - VERIFY SIZE, STYLE & CONFIGURATION IN FIELD.
- PROVIDE ADEQUATE COMPACTION OF FILL AT AREAS WHERE FILL IS REQUIRED.
- ADEQUATELY STABILIZE ALL DISTURBED SLOPES.



ANDREW AVENUE ELEMENTARY SCHOOL LAYOUT, MATERIALS & MARKING PLAN
 SCALE: 1" = 40'-0" +/- 51,000 SF (VERIFY IN FIELD)
 SCALE: 1" = 40'

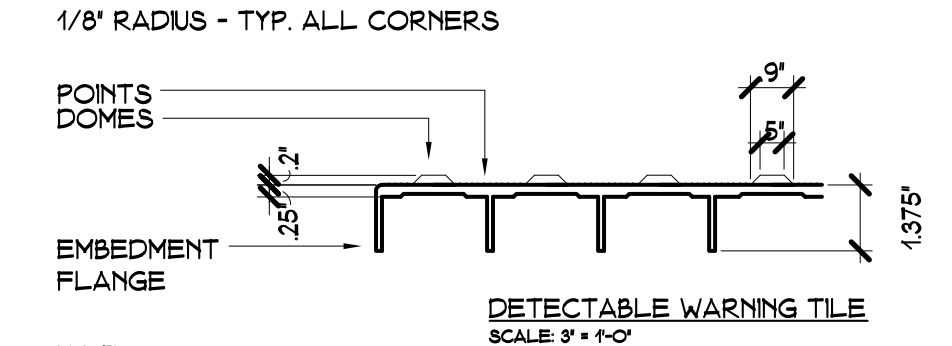
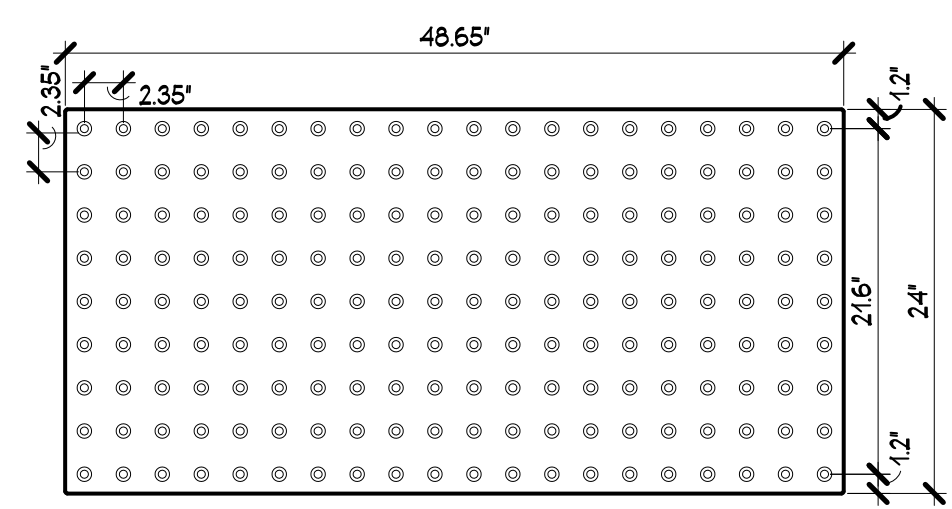
CITY HILL MIDDLE SCHOOL LAYOUT, MATERIALS & MARKING PLAN
 SCALE: 1" = 40'-0" +/- 160,000 SF (VERIFY IN FIELD)
 SCALE: 1" = 40'

Project Title:
 Naugatuck Public Schools - Andrew Avenue ES & City Hill MS
Paving & Site Upgrades
 497 Rubber Ave
 Naugatuck, Connecticut 06770

SILVER / PETRUCELLI + ASSOCIATES
 Architects / Engineers / Interior Designers
 3190 Whitney Avenue, Hamden, CT 06518-2340
 Tel. 203 230 9007 Fax. 203 230 8247
 silverpetrucelli.com

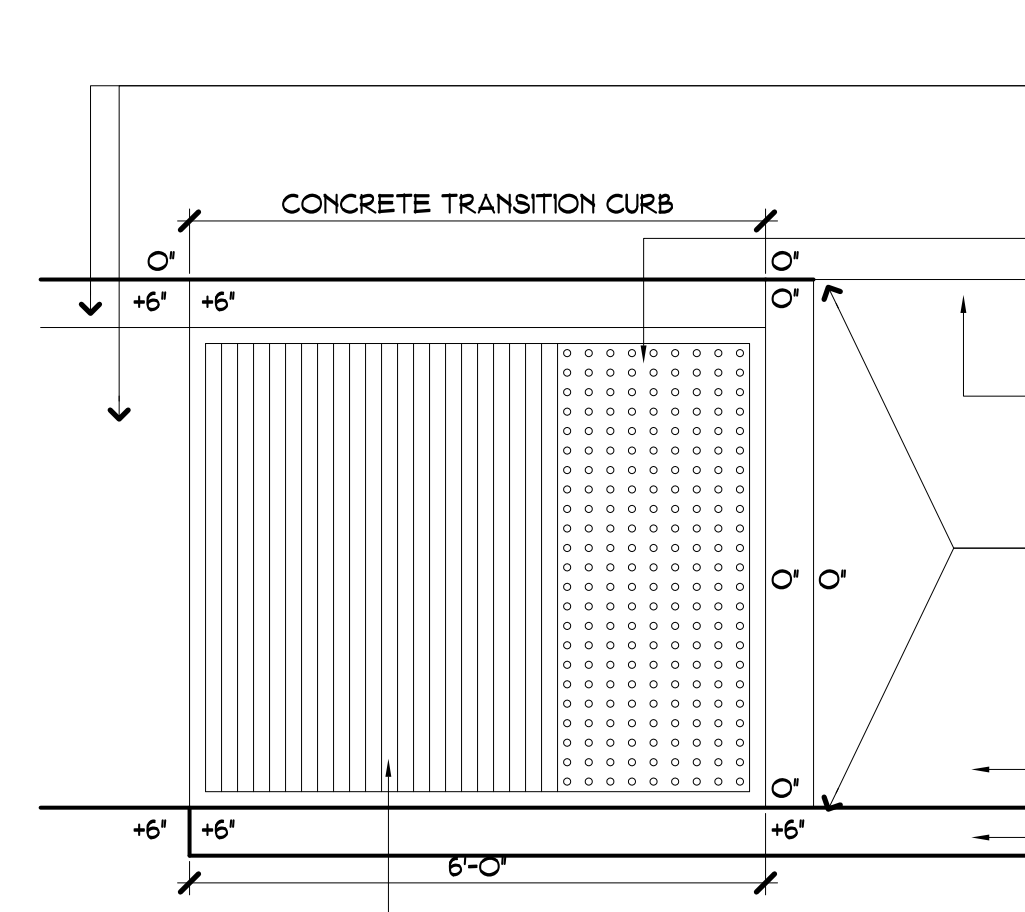
Revision	Description	Date	Revised By

Drawing Title:
Layout, Materials and Marking Plans & Notes
 Date: JUNE 8, 2018
 Scale: AS NOTED
 Drawn By: R.H.
 Project Number: 17.147
CS100



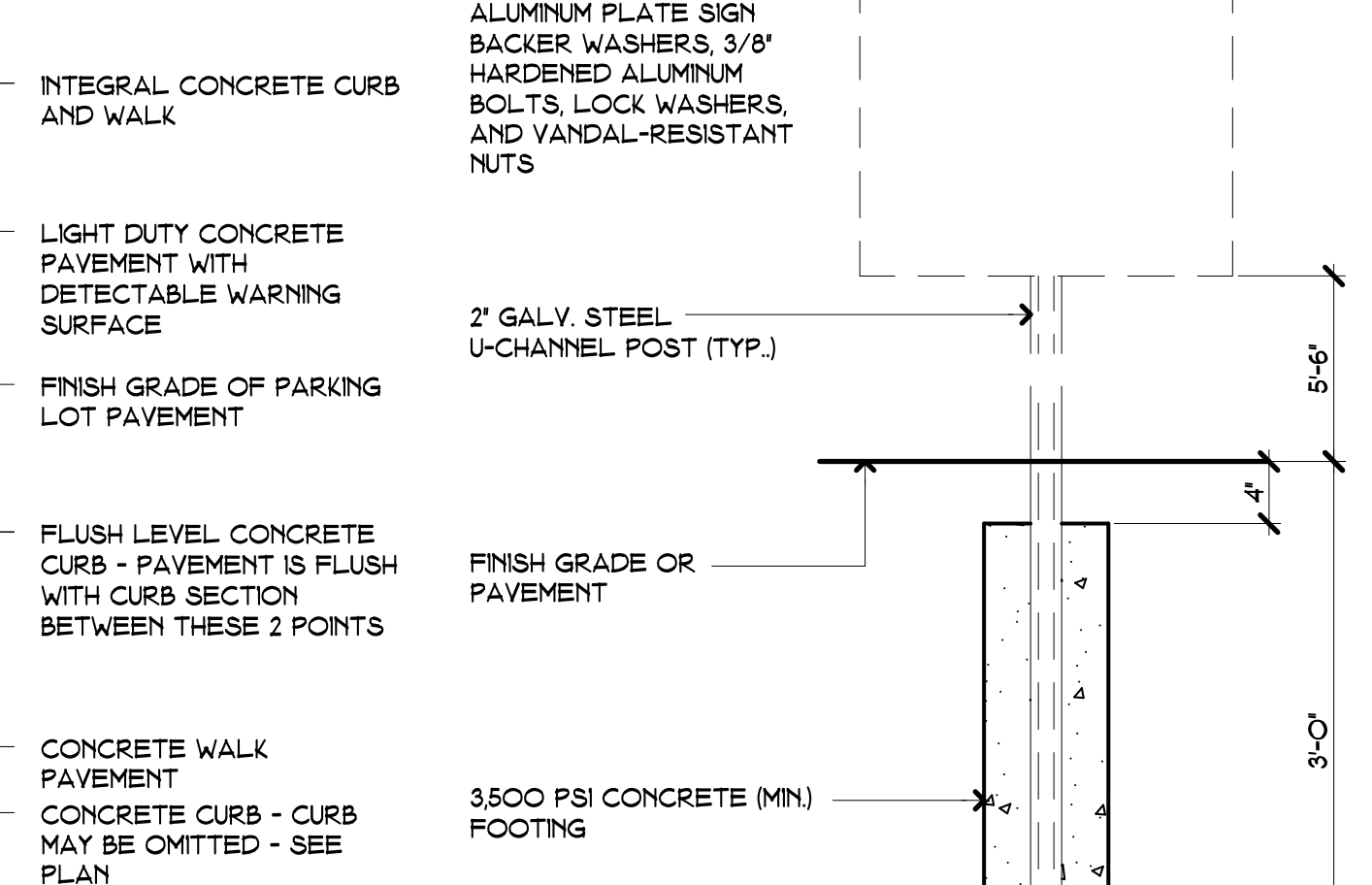
NOTE:
1. DETECTABLE WARNING TILE SHALL BE CAST-IN-PLACE TYPE ONLY. SURFACE MOUNTING OF TILES TO EXISTING CONCRETE IS NOT ACCEPTABLE. EXISTING CONCRETE SHALL BE SAWCUT, REMOVED AND REPLACED WITH CAST-IN-PLACE.
2. SEE PLAN FOR LOCATIONS OF DETECTABLE WARNING TILE

DETECTABLE WARNING
SCALE: 1" = 1'-0"



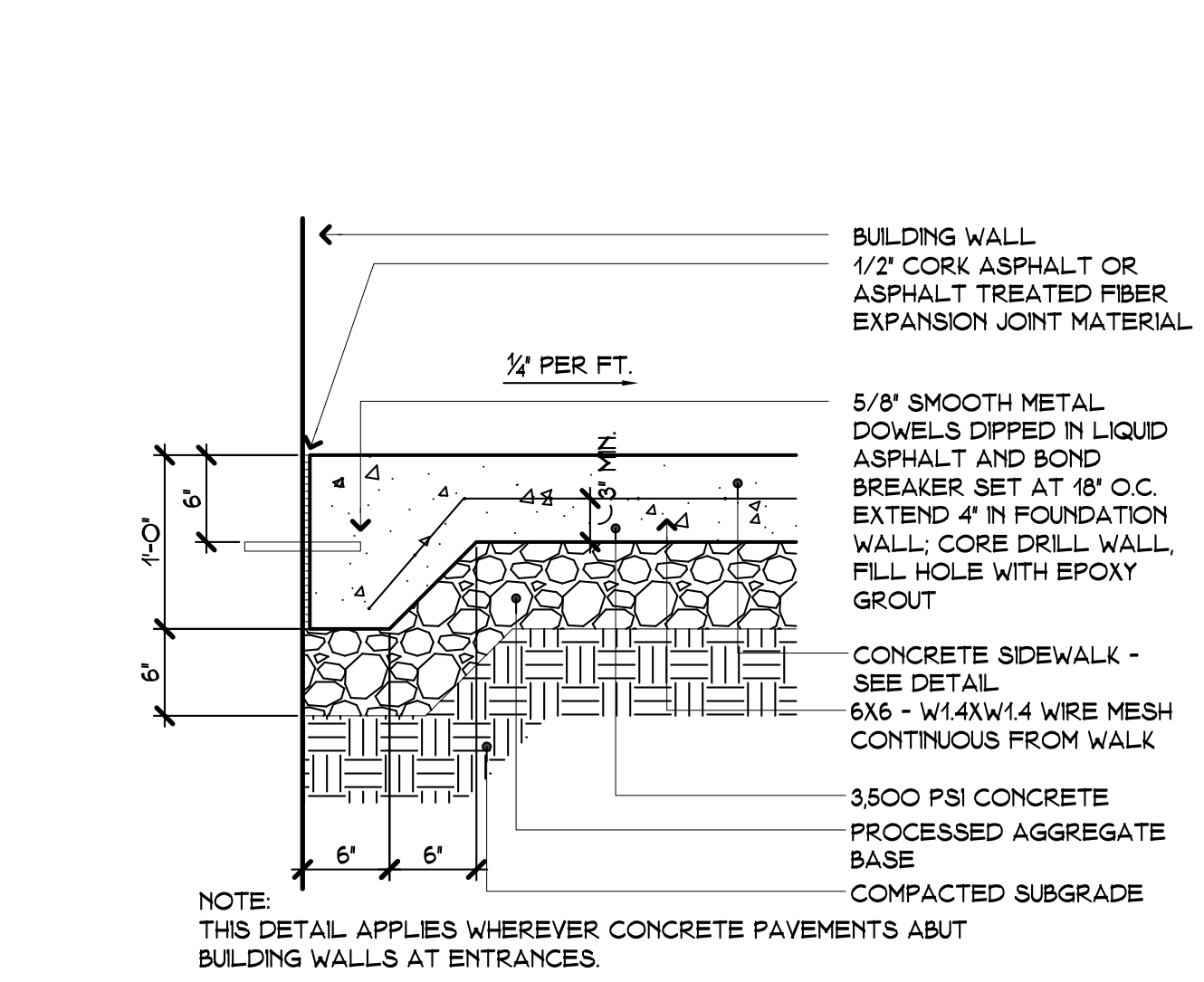
NOTE: ALL ACCESSIBLE CURB/RAMPS ARE 6" HT. UNLESS OTHERWISE NOTED ON PLANS. SEE PLANS FOR SPOT ELEVATIONS.

ADA RAMP
SCALE: 1/2" = 1'-0"

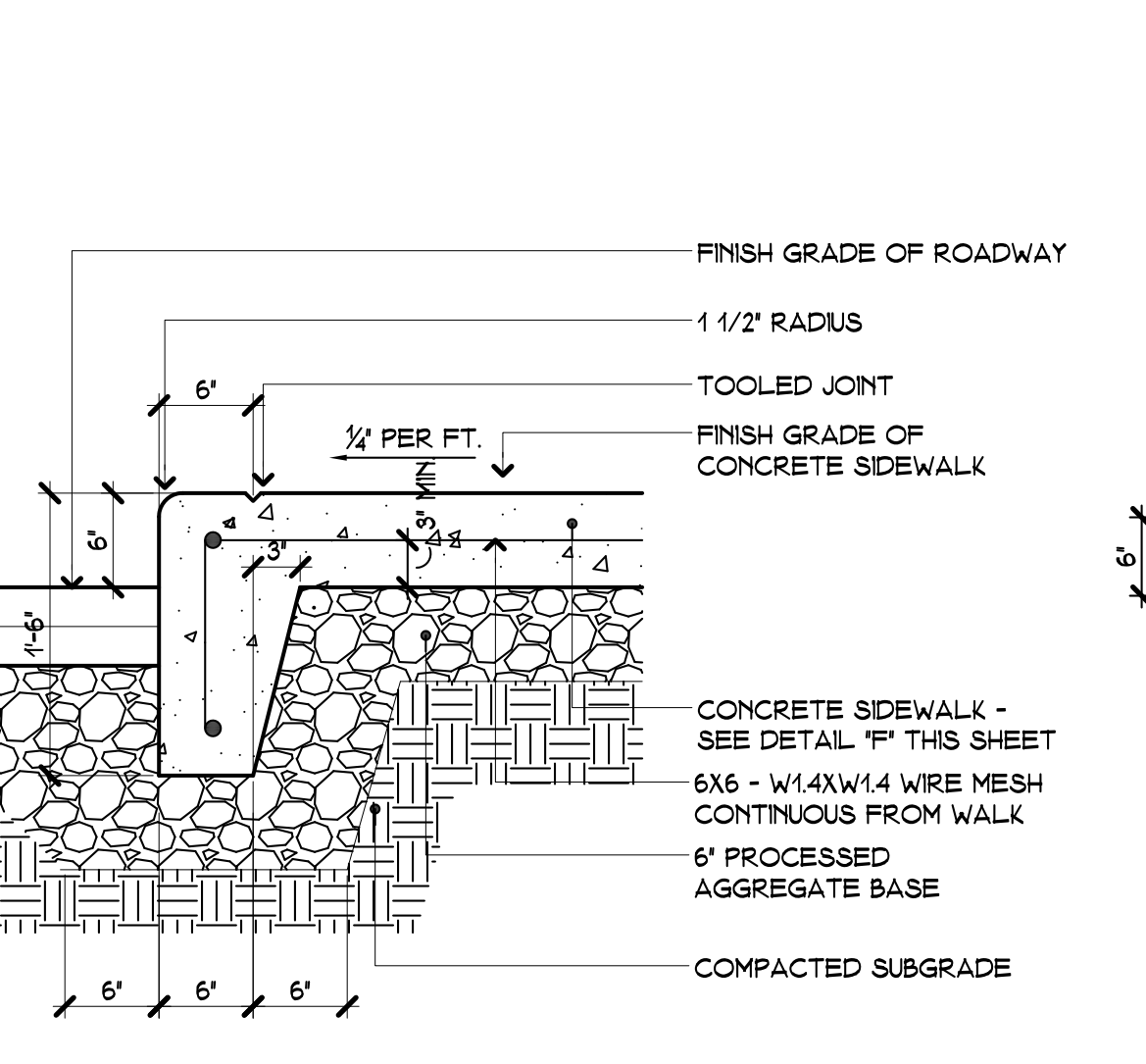


NOTE: THIS DETAIL DOES NOT APPLY TO SIGNAGE AT ACCESSIBLE PARKING SPACES. REFER TO DETAIL G/CS101 FOR SIGNAGE REQUIREMENTS AT ACCESSIBLE PARKING SPACES.

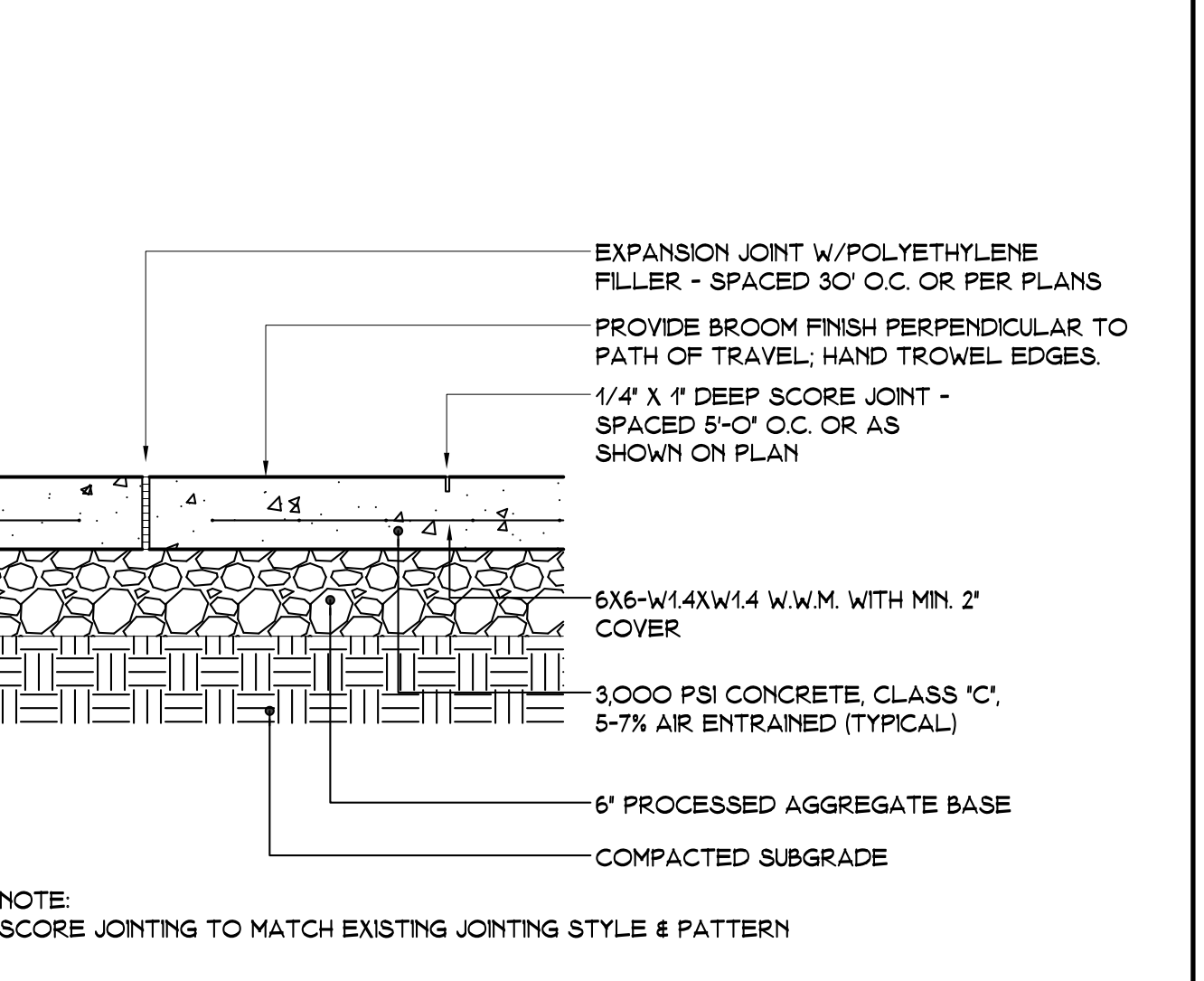
U-CHANNEL SIGN POST
SCALE: 1" = 1'-0"



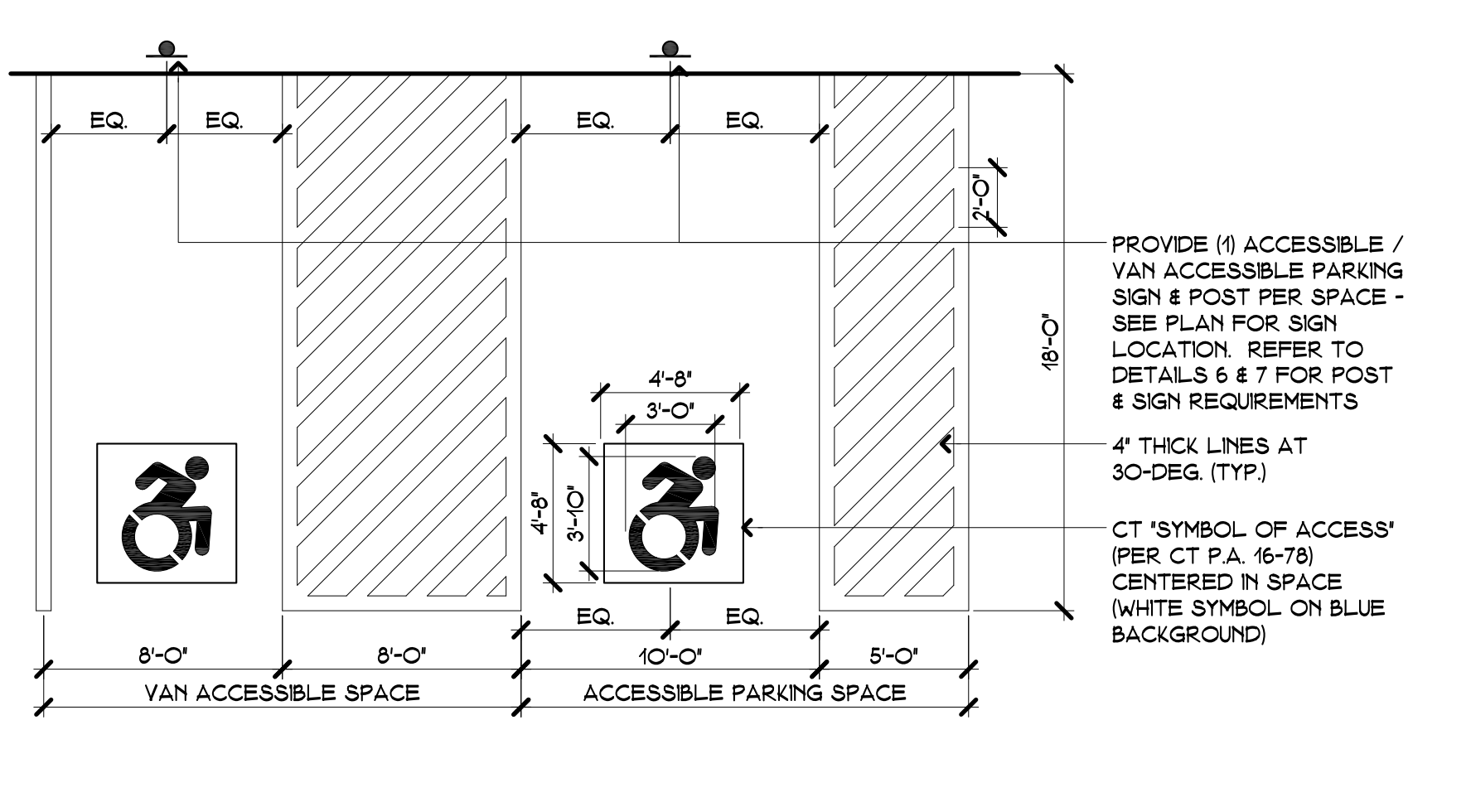
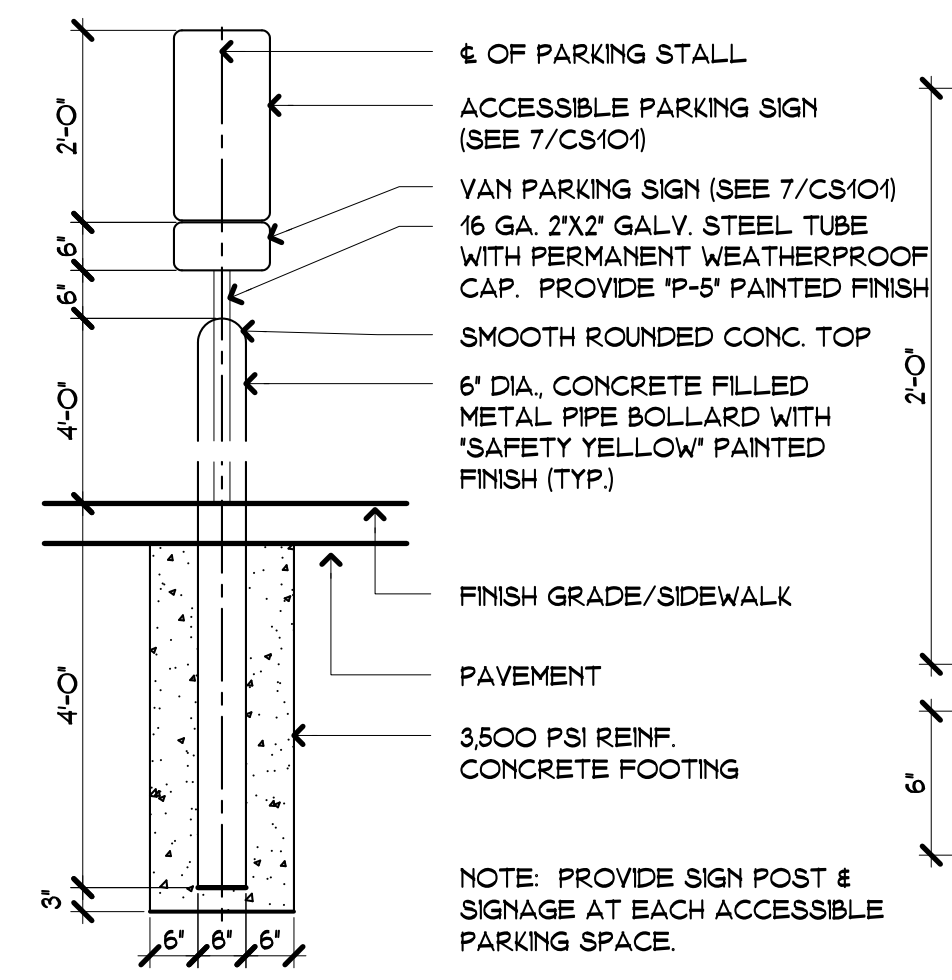
PINNED CONCRETE SIDEWALK DET.
SCALE: 1" = 1'-0"



INTEGRAL CONCRETE WALK & CURB
SCALE: 1" = 1'-0"



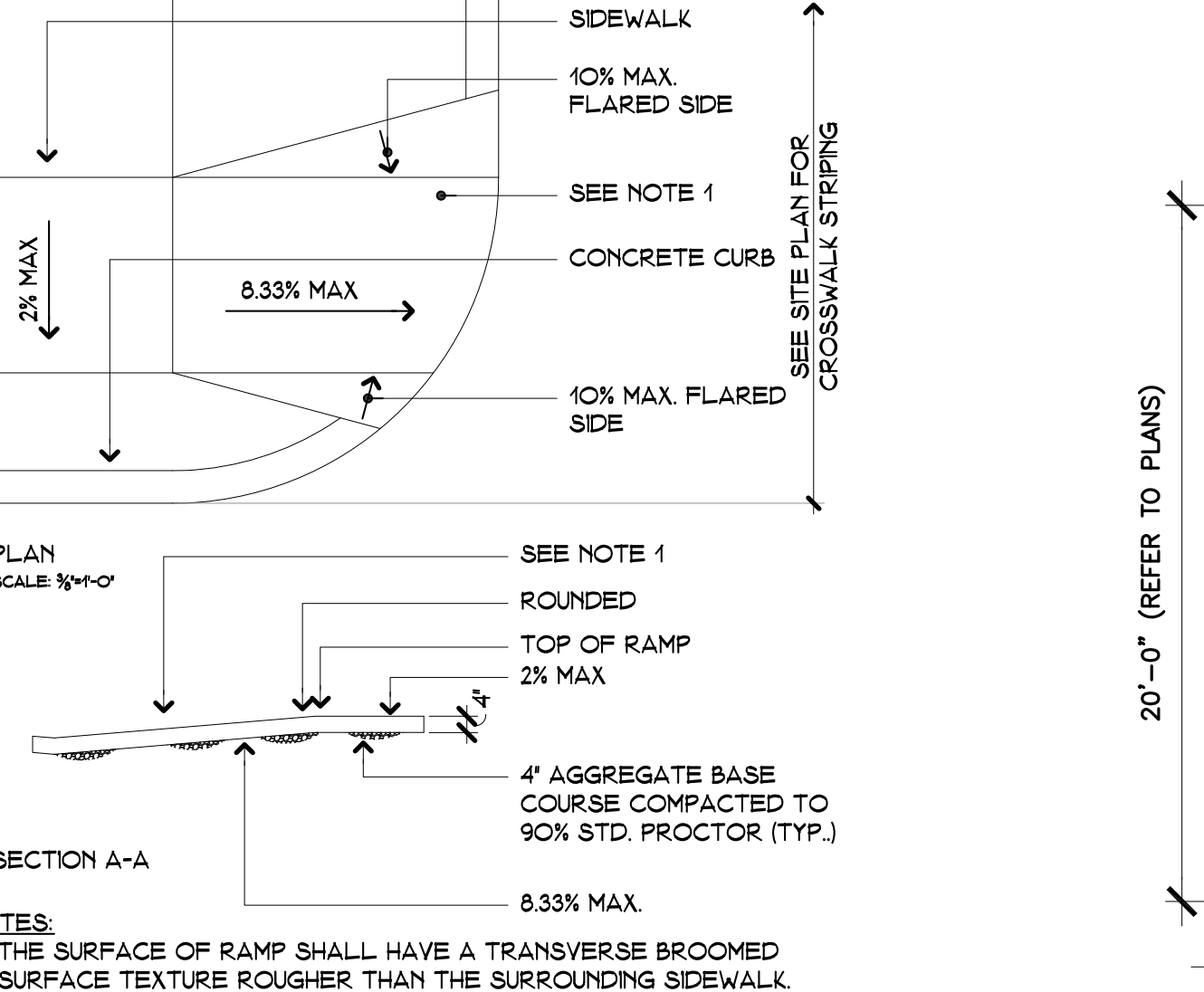
CONCRETE WALK PAV.
SCALE: 1" = 1'-0"



ACCESSIBLE PARKING SIGN POST DETAIL
SCALE: 1/2" = 1'-0"

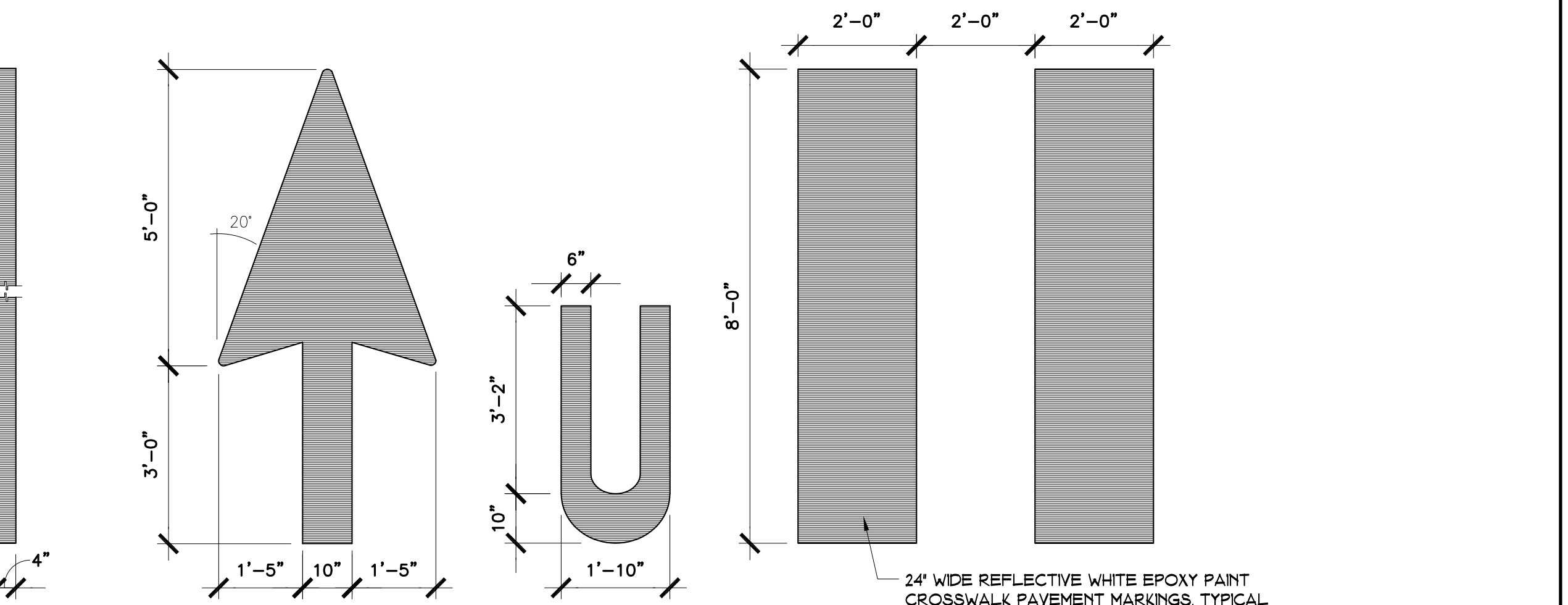
HC PARK. SIGN
SCALE: 1/2" = 1'-0"

TYP. ACCESSIBLE PARKING SPACE DETAIL
SCALE: 3/16" = 1'-0"



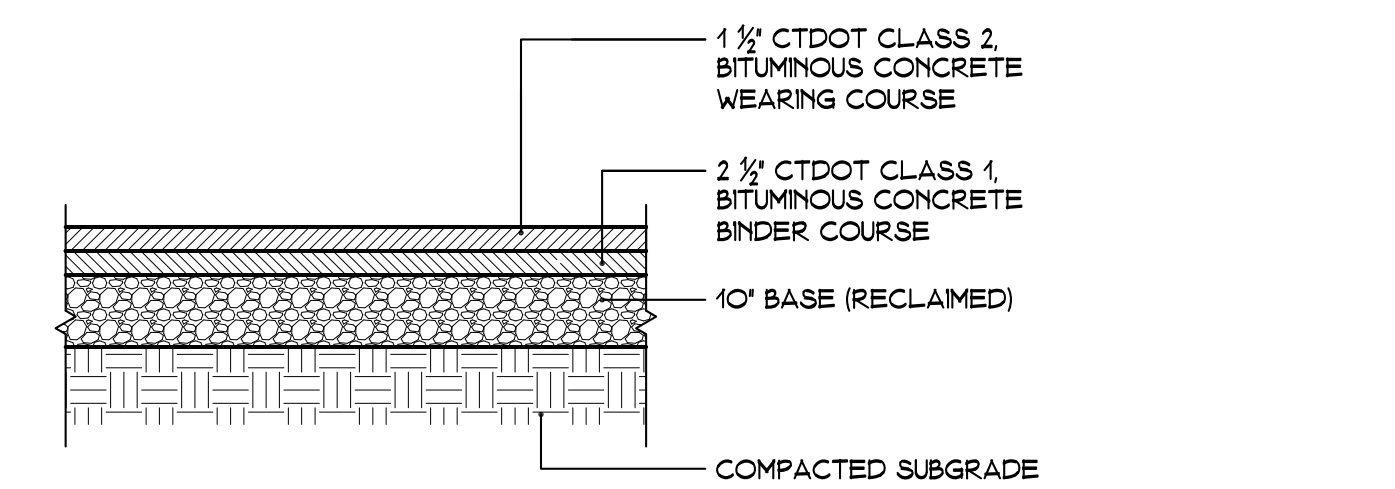
NOTES:
1. THE SURFACE OF RAMP SHALL HAVE A TRANSVERSE BROOMED SURFACE TEXTURE ROUGHER THAN THE SURROUNDING SIDEWALK.
2. RAMP SIDE SLOPE VARIES UNIFORMLY FROM A MAXIMUM OF UP TO 10% AT CURB TO CONFORM WITH LONGITUDINAL SIDEWALK SLOPE ADJACENT TO TOP OF THE RAMP.
3. CONSTRUCT PER CURRENT ADA STANDARDS.

ADA RAMP IN SIDEWALK
SCALE: 1/8" = 1'-0"



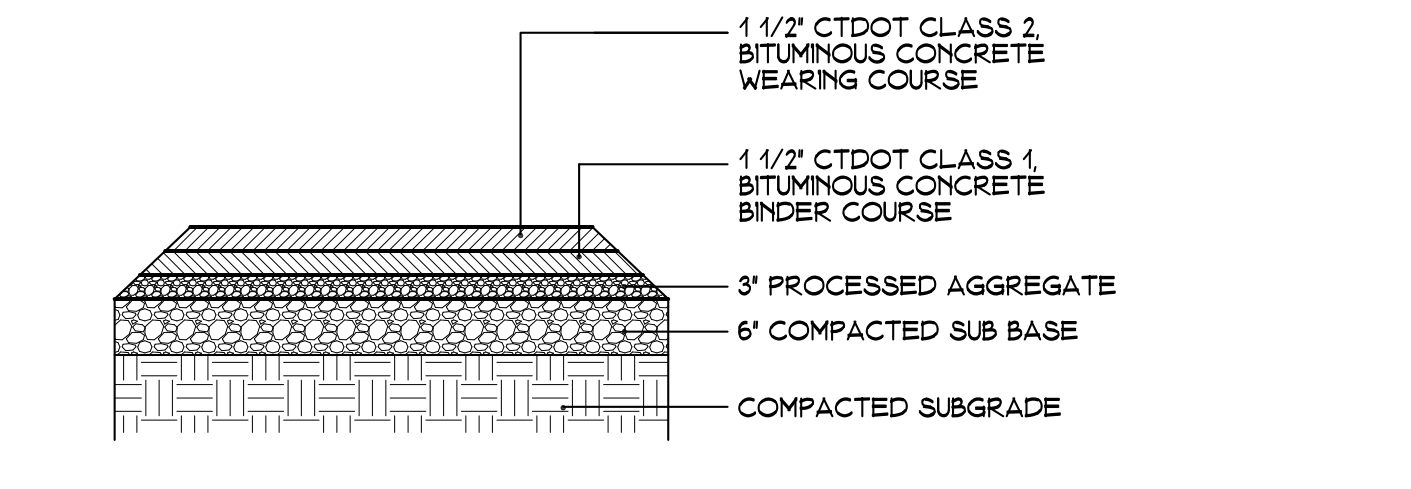
NOTE:
1. PROVIDE NON-REFLECTIVE WHITE PAINT - REFER TO PROJECT MANUAL FOR ADDITIONAL REQUIREMENTS.

TYP. PAVEMENT MARKING DETAILS
SCALE: 1/2" = 1'-0"



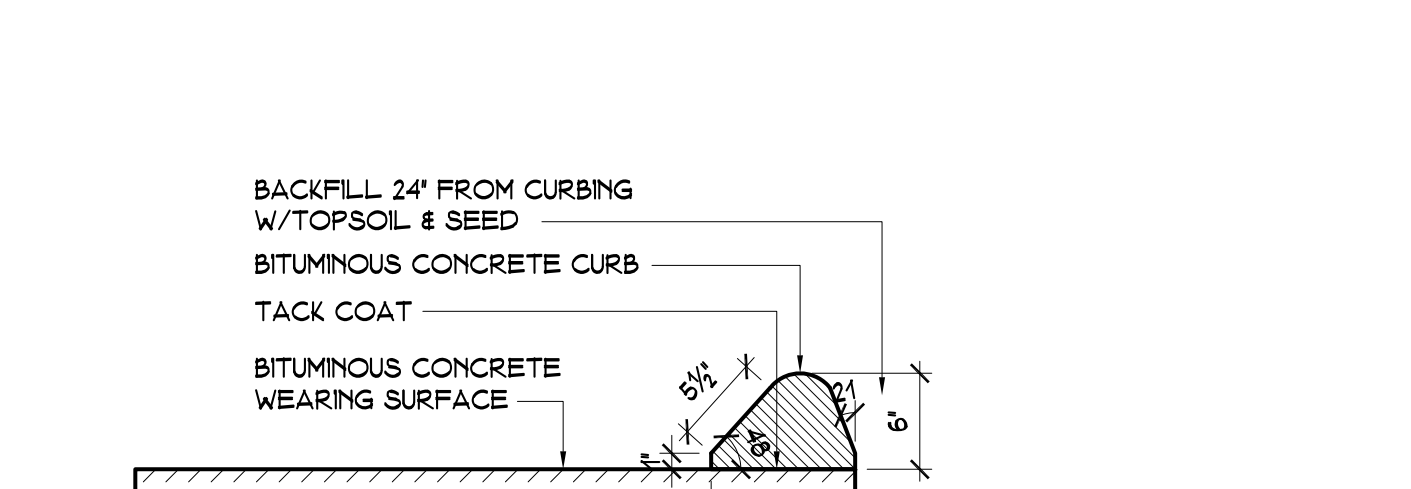
NOTE: EXISTING BITUMINOUS PAVEMENT AND BASE TO BE RECLAIMED FOR USE AS BASE MATERIAL FOR NEW BITUMINOUS PAVEMENT. EXCAVATE & ADJUST EXISTING BASE MATERIAL/SUBGRADE AS REQUIRED TO MAINTAIN EXISTING GRADES.

BITUMINOUS PAVEMENT DETAIL (TYP)
SCALE: 1/2" = 1'-0"



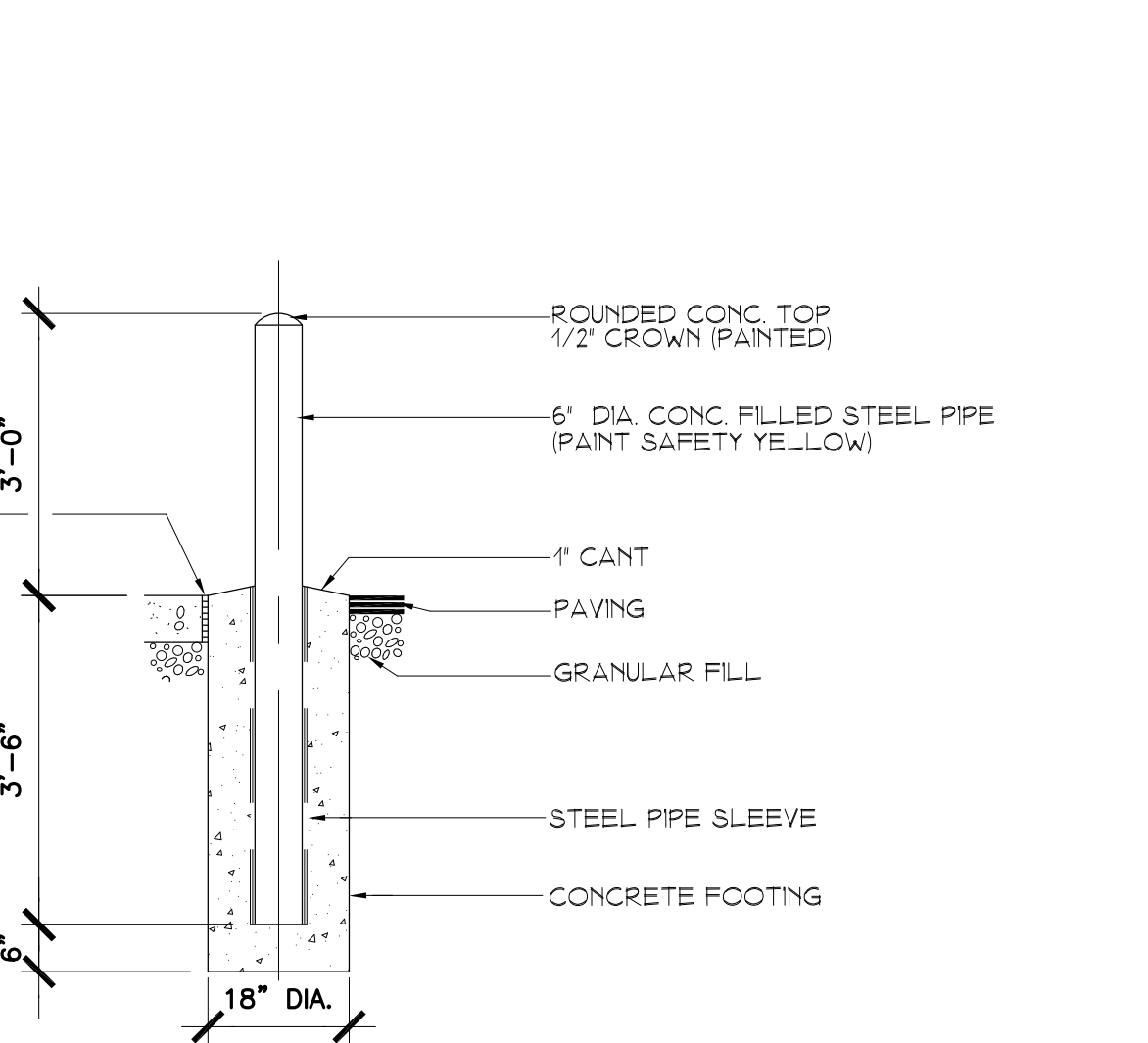
NOTES:
1. EXISTING BITUMINOUS PAVEMENT AND BASE TO BE RECLAIMED FOR USE AS BASE MATERIAL FOR NEW BITUMINOUS PAVEMENT. EXCAVATE & ADJUST EXISTING BASE MATERIAL/SUBGRADE AS REQUIRED TO MAINTAIN EXISTING GRADES.
2. BACKFILL 24" OUT FROM PERIMETER OF SIDEWALK W/TOPSOIL AND SEED.

BITUMINOUS SIDEWALK DETAIL (TYP)
SCALE: 1/2" = 1'-0"

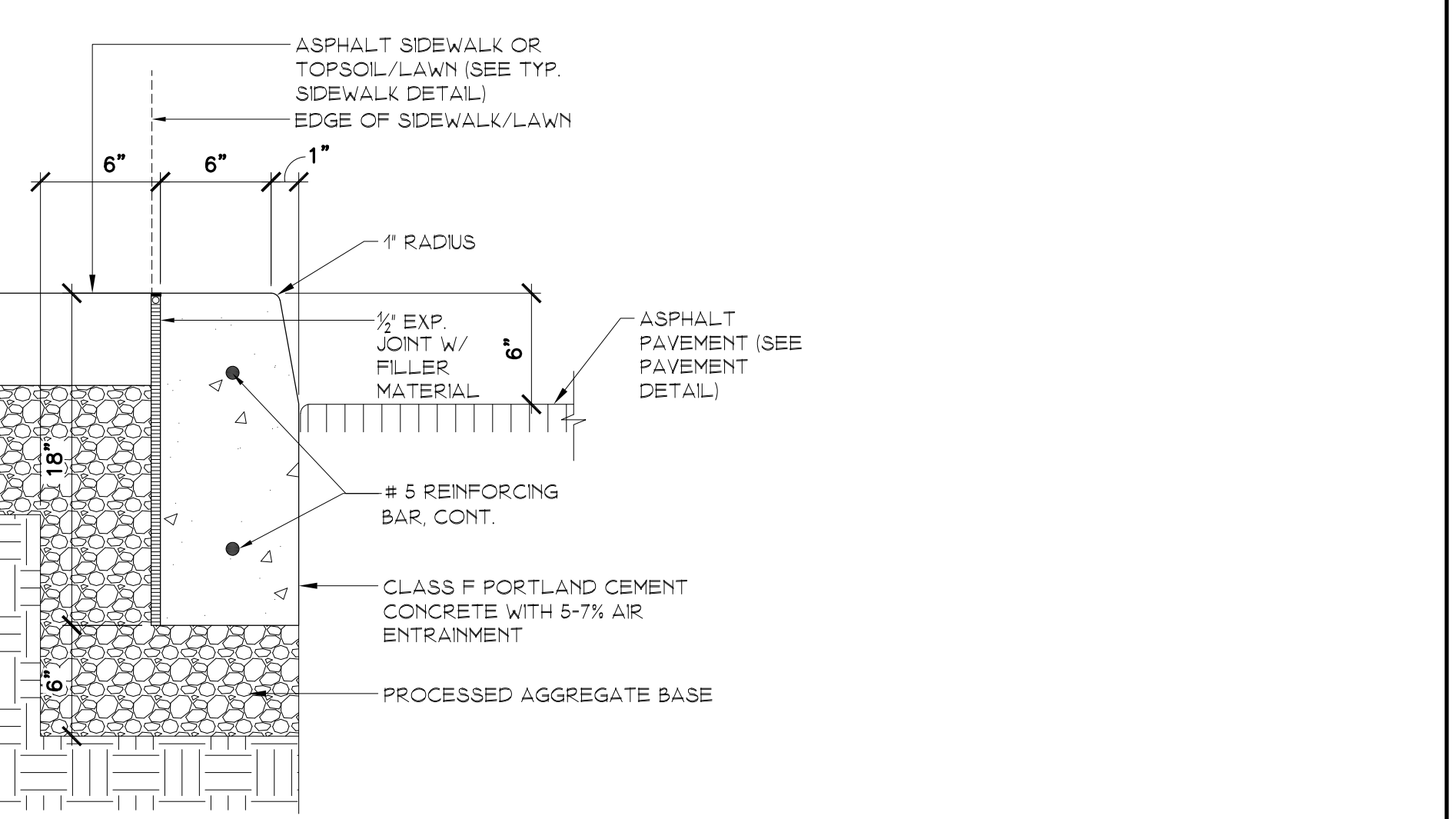


BACKFILL 24" FROM CURBING W/TOPSOIL & SEED

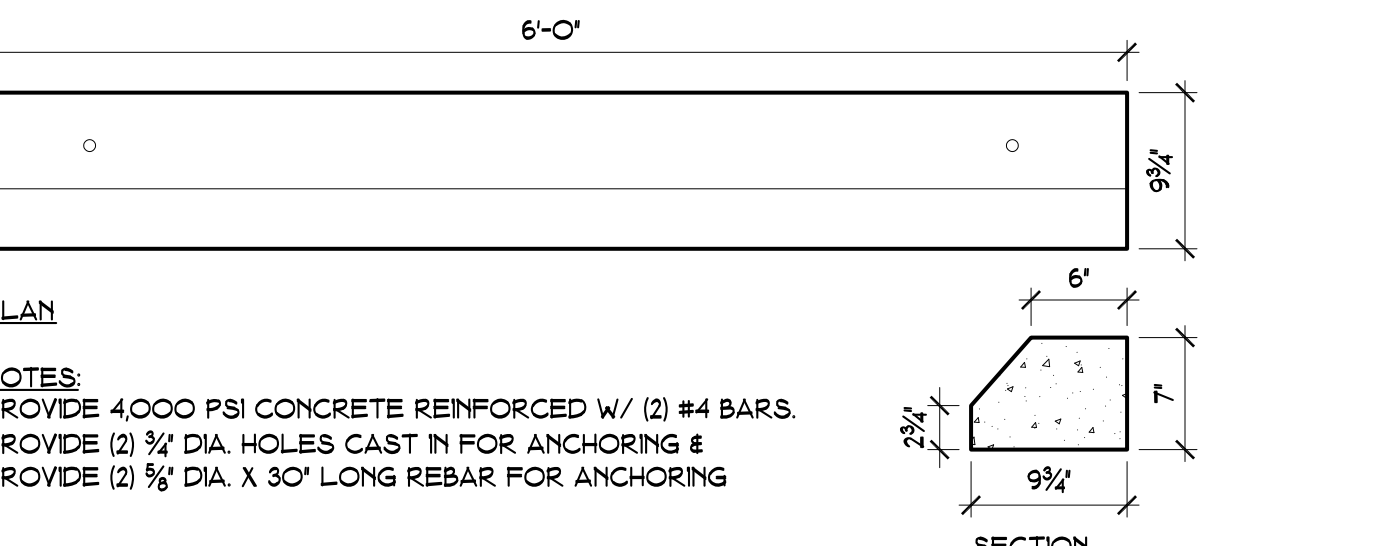
TYPICAL BITUMINOUS CURB DETAIL
SCALE: 1" = 1'-0"



TYPICAL PIPE BOLLARD DETAIL
SCALE: 1/2" = 1'-0"



TYPICAL CAST-IN-PLACE CONCRETE CURB DETAIL
SCALE: 1-1/2" = 1'-0"



NOTES:
PROVIDE 4000 PSI CONCRETE REINFORCED W/ (2) #4 BARS.
PROVIDE (2) 1/2" DIA. HOLES CAST IN FOR ANCHORING &
PROVIDE (2) 1/2" DIA. X 30" LONG REBAR FOR ANCHORING

TYPICAL PRECAST CONCRETE WHEEL STOP DETAIL
SCALE: 1" = 1'-0"